

How big is the average home inverter





Overview

How big should a solar inverter be?

Generally, it's recommended to size the inverter to 80-100% of the DC system's rated capacity. Before determine the inverter size, the most important thing is to calculate your average daily power consumption (kWh) and calculate your solar panel array size to match your power consumption. You could follow our to make this estimation.

Do I need an inverter size chart?

The need for an inverter size chart first became apparent when researching our DIY solar generator build. Solar generators range in size from small generators for short camping trips to large off-grid power systems for a boat or house. Consequently, inverter sizes vary greatly.

How do you calculate the size of an inverter?

To calculate or determine what size inverter can meet your energy requirements, you need to calculate the total power of all the appliances you want to run with the inverter. Here is how you can do it. Step 1: Identify all electrical appliances you want to run with an inverter and list them all.

How to choose an inverter for a house?

When choosing an inverter for a house, you should consider its size, type, and potential features. Two major types of inverters exist in the market: modified sine wave and pure sine wave. Pure sine wave inverters are expensive but they can deliver a reliable and consistent power supply to AC appliances, thereby maintaining their safety.



How big is the average home inverter



[The Only Inverter Size Chart You'll Ever Need](#)

Sep 25, 2023 · We created a comprehensive inverter size chart to help you select the correct inverter to power your appliances. The need for an inverter size chart first became apparent ...

[What size inverter do I need to power my entire house?](#)

May 30, 2025 · Want to power your entire home with solar energy? Learn how to calculate the size of a solar inverter based on your home's electricity needs and get tips on choosing ...



[How to Size a Home Power Inverter for Your ...](#)

Sep 13, 2024 · Provide detailed instructions on how to calculate the appropriate size of a power inverter based on household power ...

[The Only Inverter Size Chart You'll Ever Need](#)

How to Determine What Size Inverter I Need? What Are The Two Types of Power loads? Inverter Size Chart What Will A 300W Inverter Run? What Will A 500W Inverter Run? What Will A 700W Inverter Run? What Will A 1000W Inverter Run? What Will A 1500W Inverter



Run?What Will A 2000W Inverter Run?What Will A 3000W Inverter Run?Before we go any further, we highly recommend that you choose a pure sine wave inverter. This type of inverter delivers high-quality electricity, similar to your utility company. This way, none of your appliances run the risk of being damaged. Now, when it comes to sizing your inverter, you always need to check your appliances' wattage and ensure t See more on climatebiz Renogy

What Size Inverter Do You Need for Your ...

Well, the inverter's runtime depends on various factors, including the power consumption of the load connected, battery capacity, and the power ...



Choosing the Right Inverter Size for Your Home: A Complete ...

Dec 17, 2024 · Learn how to choose the right inverter size for your home to ensure your solar power system runs efficiently and meets your energy needs. A complete guide.

[How big of an inverter do I need to run a house?](#)

Sep 29, 2025 · The inverter capacity required to run a whole house ranges from 3kW (3000W) for baseload to 10kW (10,000W) or more for whole-house backup. The key is matching the ...



[How to Size a Home Power Inverter for Your Needs: A Step ...](#)

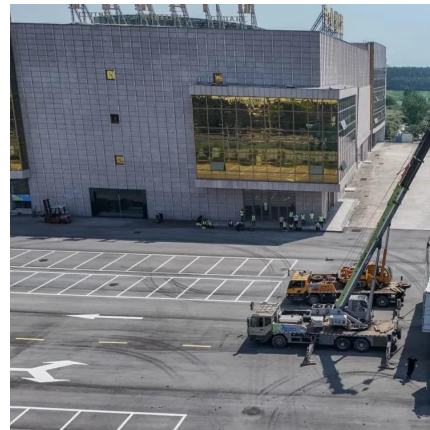
Sep 13, 2024 · Provide detailed instructions on how to calculate the appropriate size of a power



inverter based on household power requirements. Include formulas, examples, and ...

[How to Choose the Right Inverter Size for ...](#)

Jun 25, 2025 · In today's world of smart homes and renewable energy, an inverter plays a crucial role in powering our lives. Whether you're ...



[What Size Power Inverter Is Needed for a House \[Full Guide\]](#)

Mar 4, 2025 · Don't know what size power inverter is needed for your house? Check out this guide, and figure out how to determine the size of the inverter you need.

[How Big of an Inverter Do I Need to Run a Whole House?](#)

Aug 6, 2024 · Choosing the right size of an inverter is a critical decision when planning to power your entire house with solar energy. Inverters serve as the bridge between your solar panels, ...





[Inverter Size Calculator - self2solar](#)

Feb 20, 2025 · Determine the House Average Daily Power and Solar Panel Array Size Before determine the inverter size, the most important thing is to calculate your average daily power ...

[What Size Inverter Do You Need for Your Home? .. Renogy US](#)

Well, the inverter's runtime depends on various factors, including the power consumption of the load connected, battery capacity, and the power consumption of the inverter itself. However, ...

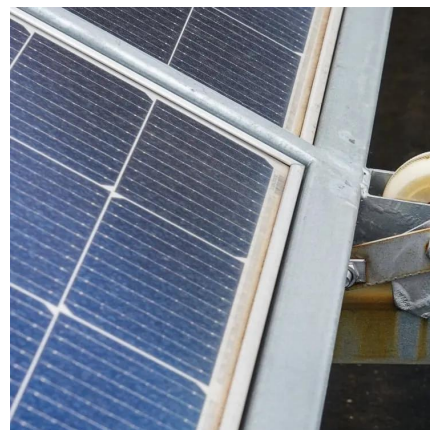


[Inverter Size Calculator - self2solar](#)

Feb 20, 2025 · Determine the House Average Daily Power and Solar Panel Array Size Before determine the inverter size, the most important thing is ...

[How to Choose the Right Inverter Size for Your Home: A...](#)

Jun 25, 2025 · In today's world of smart homes and renewable energy, an inverter plays a crucial role in powering our lives. Whether you're installing a solar energy system or preparing for ...





Contact Us

For technical specifications, project proposals, or partnership inquiries, please visit:
<https://eiei.pl>

Scan QR Code for More Information



<https://eiei.pl>