

How big a battery does the inverter come with





Overview

To calculate the battery capacity for your inverter use this formula $\text{Inverter capacity (W)} \times \text{Runtime (hrs)} / \text{solar system voltage} = \text{Battery Size} \times 1.15$ Multiply the result by 2 for lead-acid type battery, for lithium b.

What is the recommended battery size for an inverter?

Interpreting Results: Once you input the required data, the calculator will generate the recommended battery size in ampere-hours (Ah). For instance, if your power consumption is 500 watts, the usage time is 4 hours, and the inverter efficiency is 90%, the calculator might suggest a battery size of approximately 222 Ah.

What kind of batteries do inverters use?

Its modular and stackable battery packs provide the storage alone but are "inverter agnostic," which is the industry's way of saying they work with anyone. Its most popular battery is the 3.8 kWh battery module, which can be stacked and nestled next to your inverter on the wall next to your electrical panel.

What wattage Inverter should I use?

Match the inverter's continuous wattage rating to the battery's discharge capacity. For a 12V 200Ah battery (2.4kWh), a 2000W inverter is ideal. Formula: $\text{Inverter Wattage} \leq (\text{Battery Voltage} \times \text{Ah Rating} \times 0.8)$. Factor in surge power needs but prioritize sustained loads.

Do inverters need batteries?

For most residential and small commercial setups, the traditional battery and power inverter combo is the preferred choice to ensure continuous power supply during blackouts. So, while some inverter types do not require batteries, if your priority is uninterrupted backup power, investing in a quality battery in inverter system is essential.



How big a battery does the inverter come with

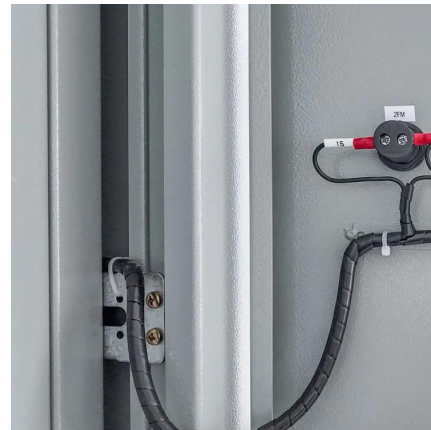


[Calculate Battery Size For Any Size Inverter \(Using Our ...\)](#)

Mar 3, 2023 · To recharge your battery from time to time you would need the right size solar panel to do the job! Read the below article to find out the suitable solar panel size for your battery ...

[Lithium Battery for Inverter: Pros, Specs, and Tips](#)

Jun 24, 2025 · Lithium batteries offer top performance and long life for inverters. This guide covers all you need to know for your power storage needs.



[Does your battery come with its own inverter?](#)

Jul 6, 2021 · Batteries without inverters Batteries or battery packs that come without an integrated inverter must be paired with an external, third-party inverter in order to connect to your solar ...

[How to Safely Connect a Battery to an ...](#)

Apr 13, 2025 · Learn how to safely connect your batteries to your inverter with our guide. Avoid common wiring mistakes to optimize performance ...



[Lithium Battery for Inverter: Pros, Specs, and ...](#)

Jun 24, 2025 · Lithium batteries offer top performance and long life for inverters. This guide covers all you need to know for your power storage ...



[The Only Inverter Size Chart You'll Ever Need](#)

Sep 25, 2023 · We have created a comprehensive inverter size chart to help you select the correct inverter to power your ...



[What Size Solar Inverter Do I Need?](#)

Feb 17, 2025 · The exact impact of your solar battery on inverter size depends on factors like battery capacity, inverter compatibility, and your ...





[Does your battery come with a built-in ...](#)

Dec 6, 2023 · Home batteries are paired with inverters to correctly store and discharge electricity. Learn which brands come with this technology built-in.



[Calculate Battery Size for Inverter Calculator](#)

Mar 14, 2025 · The Calculate Battery Size for Inverter Calculator helps you determine the optimal battery capacity needed to support your inverter system. By inputting critical parameters such ...

[Does your battery come with a built-in ...](#)

Dec 6, 2023 · Home batteries are paired with inverters to correctly store ...



[Powering Your Dreams: A Comprehensive Guide to Selecting ...](#)

Jul 15, 2025 · When it comes to off-grid living or backup power systems, inverters play a crucial role in converting DC power from batteries or solar panels to AC power for your appliances. ...



[How to Install and Wire an Inverter: A Step-by ...](#)

Learn how to wire an inverter with this detailed inverter wiring diagram guide. Understand the components and connections needed to properly set up ...



Ultimate Guide to Battery in Inverter: Choose & Maintain Right

Jul 7, 2025 · Discover how to choose, maintain, and maximize your battery in inverter for reliable backup power. Expert tips on inverter batteries, lifespan, and safety included!

[Calculate Battery Size for Inverter Calculator](#)

Mar 14, 2025 · The Calculate Battery Size for Inverter Calculator helps you determine the optimal battery capacity needed to support your inverter ...



[Does your battery come with a built-in inverter?](#)

Dec 6, 2023 · Home batteries are paired with inverters to correctly store and discharge electricity. Learn which brands come with this technology built-in.



[How to Connect a Large or Small Inverter to a ...](#)

Nov 28, 2017 · When does a small inverter's power come from a 12V DC outlet and when does that inverter need to be connected to a battery? ...

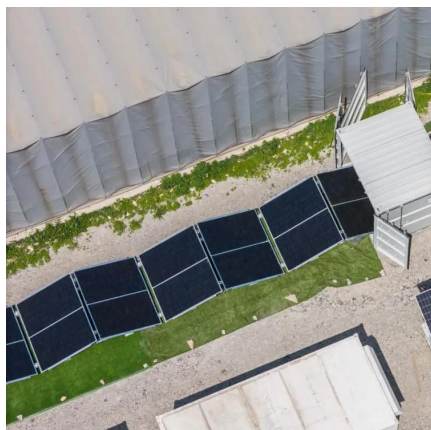


[How Big Of an Inverter Can My Car Handle](#)

The inverter is the device that converts power from battery-powered electronics to the voltage used by your car (120 volts). The greater ...

[What Size Battery Do I Need for a 1000W Inverter?](#)

Dec 13, 2023 · To power a 1000W inverter, you typically need a battery with a minimum capacity of 100Ah if you plan to run it for about one hour. However, the actual size may vary based on ...



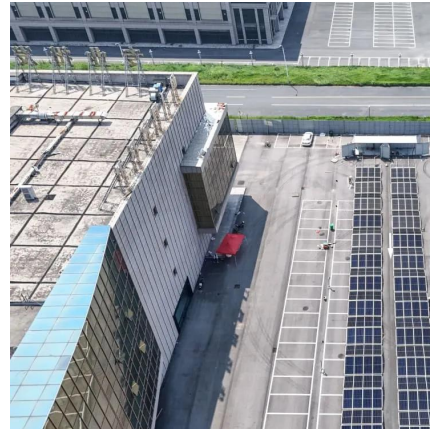
[How Much Battery Capacity Do You Need With a 12V Inverter?](#)

Jun 14, 2025 · Discover how to calculate the ideal battery capacity for a 12V inverter using simple math, practical examples, and money-saving tips for daily power.



[How Many Batteries for 1000Watt Inverter - PowMr](#)

Dec 26, 2024 · Discover the essentials of determining 'how many batteries for a 1000W inverter' in this comprehensive guide, including battery sizing and runtime calculations.



[Can an Inverter Be Too Big for Your Battery System?](#)

How to Calculate the Right Inverter Size for Your Battery Match the inverter's continuous wattage rating to the battery's discharge capacity. For a 12V 200Ah battery (2.4kWh), a 2000W inverter ...

[How To Size A Solar Inverter in 3 Easy Steps](#)

After solar panels, the inverter is the most critical component of a solar system. But how big should your inverter be? In this guide, we share 3 ...



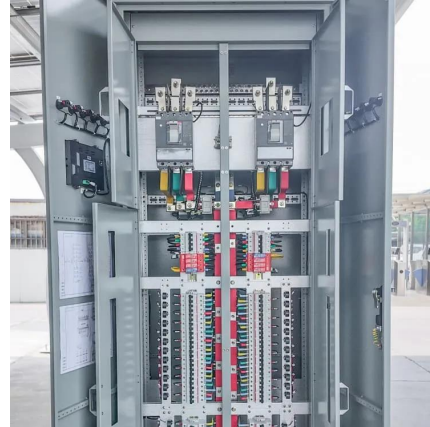
How to Determine Battery Sizes when using Pure Sine Wave Inverters

Oct 8, 2025 · Sine wave inverters come in all sizes, from a small micro sine wave inverter, to larger kilowatt pure sine wave power inverters. When choosing your sine waveform inverters, ...



[How Many Batteries for 1000Watt Inverter - ...](#)

Dec 26, 2024 · Discover the essentials of determining 'how many batteries for a 1000W inverter' in this comprehensive guide, including battery sizing ...



Contact Us

For technical specifications, project proposals, or partnership inquiries, please visit:
<https://eiei.pl>

Scan QR Code for More Information



<https://eiei.pl>