

How big a battery can a 24v800w inverter carry





Overview

How much battery does a 24 volt inverter use?

For 24-volt inverters, it is 10 %. The battery capacity for a 12-volt Mass Sine 12/1200, for instance, is 240 Ah, while a 24-volt Mass Sine 24/1500 inverter would require at least 150 Ah. The indicated battery capacity is only for the inverter. The capacity required for other loads should be added to it. How much power does an inverter consume?

.

What is the recommended battery size for an inverter?

Interpreting Results: Once you input the required data, the calculator will generate the recommended battery size in ampere-hours (Ah). For instance, if your power consumption is 500 watts, the usage time is 4 hours, and the inverter efficiency is 90%, the calculator might suggest a battery size of approximately 222 Ah.

How many batteries can a 36V inverter charge?

If there are three 12V 200ah batteries, the battery voltage is 36V ($12V \times 3 = 36$). An inverter with a 36V can recharge these batteries. The maximum capacity is 600ah ($200 \times 3 = 600$). Battery Parallel Connection. If the battery bank is connected in parallel, the battery bank capacity increases but the battery voltage is the same as each cell.

What wattage Inverter should I use?

Match the inverter's continuous wattage rating to the battery's discharge capacity. For a 12V 200Ah battery (2.4kWh), a 2000W inverter is ideal. Formula: $\text{Inverter Wattage} \leq (\text{Battery Voltage} \times \text{Ah Rating} \times 0.8)$. Factor in surge power needs but prioritize sustained loads.



How big a battery can a 24v800w inverter carry

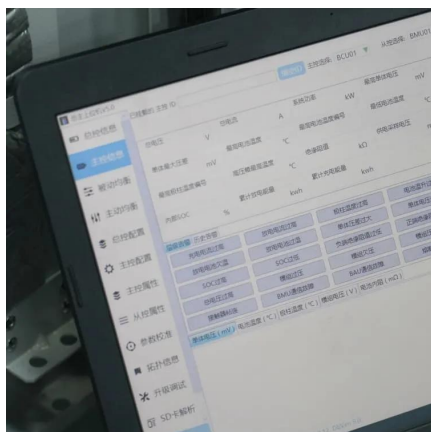


[What Can a Solar System Run: 3KW, 8kW, ...](#)

Jul 29, 2022 · What can a 3kW or 8kW solar system run in an average household? Discover the differences and make an informed decision for ...

[What Can a 1 kVA Inverter Carry? Answered!](#)

Mar 6, 2025 · Inverters are essential for ensuring a stable power supply, especially in areas with frequent outages or blackouts. A 1 kVA inverter is a popular choice for homes, small offices, ...



[How Big of a Battery Do I Need for a 1000 Watt Inverter? A](#)

Aug 13, 2024 · When planning for a 1000 watt inverter setup, one of the most crucial factors to determine is the battery capacity required to power it effectively. Understanding the right ...

[What Inverter Size Do You Need to Run a ...](#)

A 15 cu. ft. freezer can run for 5 hours on a 300ah 12V battery and a 450W inverter. This assumes the battery has a 50% discharge and the inverter ...



[How Long Will A 24V Battery Last With an Inverter](#)

Sep 19, 2025 · Learn how long a 24V battery lasts with an inverter. Step-by-step calculation, examples, 12V vs 24V comparison, FAQs, and tips to maximize runtime.



[How to Connect a Large or Small Inverter to a ...](#)

Nov 28, 2017 · by: Justin Gray This blog answers questions about which inverters can be powered by 12V DC accessory outlets (cigarette lighter ...



[Frequently Asked Questions about Inverters](#)

Frequently Asked Questions about Inverters How much battery capacity do I need with an inverter? As a rule of thumb, the minimum required battery capacity for a 12-volt system is ...





[What Battery for a 500-Watt Inverter](#)

Sep 16, 2025 · A 500-watt power inverter can run a variety of small appliances and electronic devices that operate at or below 500 watts of power consumption. The inverter converts direct ...



[What Size Power Inverter Is Needed for a ...](#)

Mar 4, 2025 · You know you need a power inverter, but the big question is: How big of a power inverter do I need? In general, a 3000W to 5000W ...

[Determining the Solar and Inverter Size ...](#)

Jul 29, 2025 · Stackable Inverters Many hybrid and off-grid inverters allow you to parallel multiple units. This flexibility lets you increase inverter Size ...



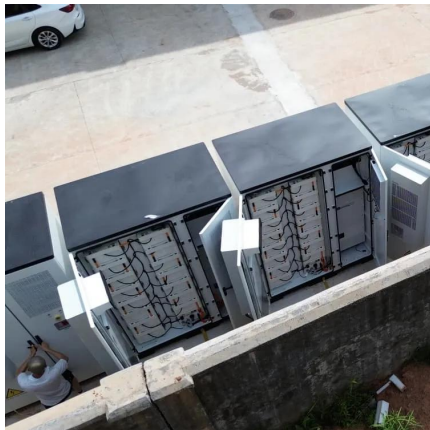
[What Inverter Size is Best for a 100Ah Battery?](#)

A 12V 100Ah battery can reasonably power an inverter up to 1000W-1200W for short periods. For continuous loads, 500W-800W is more efficient and battery-friendly.



[How Big Of an Inverter Can My Car Handle](#)

The inverter is the device that converts power from battery-powered electronics to the voltage used by your car (120 volts). The greater ...

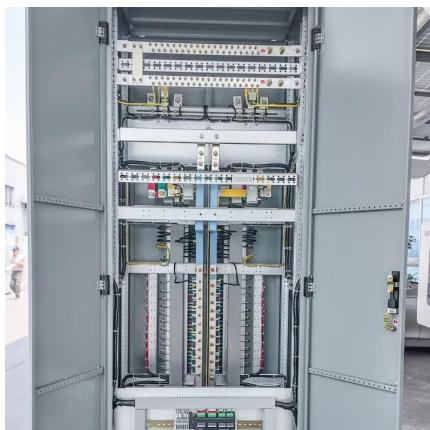


[Calculate Battery Size for Inverter Calculator](#)

Mar 14, 2025 · The Calculate Battery Size for Inverter Calculator helps you determine the optimal battery capacity needed to support your inverter ...

[Calculate Battery Size For Any Size Inverter \(Using Our ...](#)

Mar 3, 2023 · Pairing a right size capacity battery for an inverter can be a bit confusing for most the beginners So I have made it easy for you, use the calculator below to calculate the battery ...



[How to Calculate the Right Battery Size for ...](#)

Calculating the correct battery size ensures that your inverter system can meet your power needs without leaving you in the dark during outages.

...



[How Many Batteries can Be Connected To An Inverter?](#)

An inverter is only as good as the power source. Discover how many batteries you can connect to an inverter and get the most out of it.

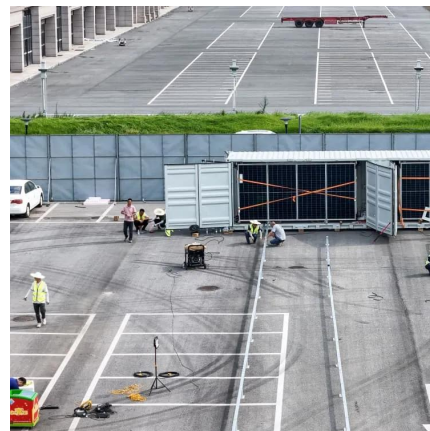


[Calculate Battery Size for Inverter Calculator](#)

Mar 14, 2025 · The Calculate Battery Size for Inverter Calculator helps you determine the optimal battery capacity needed to support your inverter system. By inputting critical parameters such ...

How to Calculate the Right Battery Size for Your Inverter ...

Calculating the correct battery size ensures that your inverter system can meet your power needs without leaving you in the dark during outages. An undersized battery may not provide enough ...



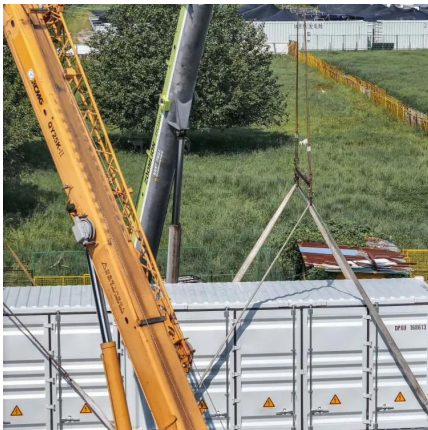
Determining the Solar and Inverter Size Needed to Charge a Battery

Jul 29, 2025 · Stackable Inverters Many hybrid and off-grid inverters allow you to parallel multiple units. This flexibility lets you increase inverter Size as your system grows. Adding Solar Panels ...



[How Many Batteries can Be Connected To An ...](#)

An inverter is only as good as the power source. Discover how many batteries you can connect to an inverter and get the most out of it.

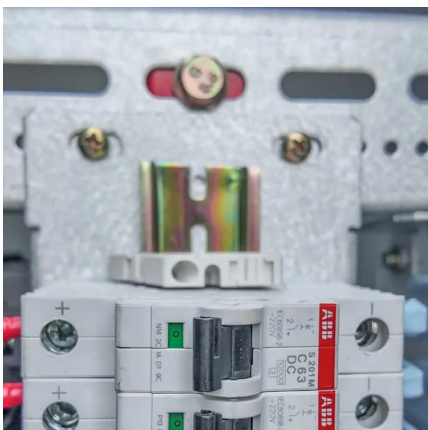


[How big a 24 volt battery should I use with an 800w ...](#)

Sep 27, 2023 · As the photovoltaic (PV) industry continues to evolve, advancements in How big a 24 volt battery should I use with an 800w photovoltaic panel have become critical to optimizing ...

[Can an Inverter Be Too Big for Your Battery System?](#)

How to Calculate the Right Inverter Size for Your Battery Match the inverter's continuous wattage rating to the battery's discharge capacity. For a 12V 200Ah battery (2.4kWh), a 2000W inverter ...



[Understanding Battery Capacity and Inverter Compatibility](#)

Aug 20, 2024 · How Long Can a 100 Ah Battery Run a 1000W Inverter? To estimate how long a battery can run an inverter, we need to consider the power draw and the battery's capacity. ...



[Can a Battery Be Too Big for an Inverter?](#)

Dec 12, 2023 · Yes, a battery can be too big for an inverter, leading to inefficiencies and potential safety issues. Oversized batteries may not discharge correctly or could exceed the inverter's ...



Contact Us

For technical specifications, project proposals, or partnership inquiries, please visit:
<https://eiei.pl>

Scan QR Code for More Information



<https://eiei.pl>