

# **Does the home charging station have an inverter**





## Overview

---

Should you choose a portable power station or an inverter?

When deciding between a portable power station and an inverter, consider factors such as portability, power output, and charging options. Portable power stations may be more expensive due to their built-in battery and portability features, while inverters may require additional components like a battery or power source.

What is the difference between an inverter and a power station?

**Inverter:** Generally less portable as it's designed to be used with external batteries or power sources. It's more suited for stationary setups or situations where you have a dedicated power source. **Portable Power Station:** Designed for portability, making it ideal for camping, outdoor activities, and emergency preparedness.

What is an inverter charger?

An inverter charger is a hybrid device that combines two critical functions in one unit: **Inverting:** Converts DC power from batteries (e.g., 12V/24V/48V) to AC power (120V/240V) for household appliances. **Charging:** Converts AC power from the grid or a generator back to DC to recharge your batteries—automatically and efficiently.

Do inverters need a battery?

**Dependency on a Power Source:** Inverters require a steady DC power source to function, so you'll need a battery or other DC supply. **Complex Setup:** Setting up an inverter system can be complex, especially if integrating it with solar panels or other energy sources.



## Does the home charging station have an inverter



### Portable Power Station vs Inverter - Key Differences Explained

Sep 6, 2024 · An inverter converts DC power from a battery to AC power for various devices. A portable power station includes an inverter along with a built-in battery, offering a self ...

### [Inverter vs. Inverter Charger: What's the Difference?](#)

Mar 17, 2025 · Confused about inverters and inverter chargers? Learn the key differences, discover their best uses, and find the perfect energy solution for your needs.



### [GM Energy Vehicle-to-Home Solutions](#)

1 day ago · Made to do much more than power up your V2H-capable GM EV, GM Energy's bidirectional charging is a new way to look at energy overall. ...

### [How is EV Charging Revolutionized by Inverters?](#)

Mar 13, 2025 · Conclusion: Future of EV Charging in Solar Energy Investing in a single-phase string inverter for a solar-powered electric vehicle charging station can substantially improve ...



### [Power Smarter: DC-DC vs Inverter Charging Explained](#)

Aug 4, 2025 · Unlock the best charging method for your needs. Compare DC-to-DC vs inverter chargers on cost, efficiency, & power to make the smartest choice for your setup.



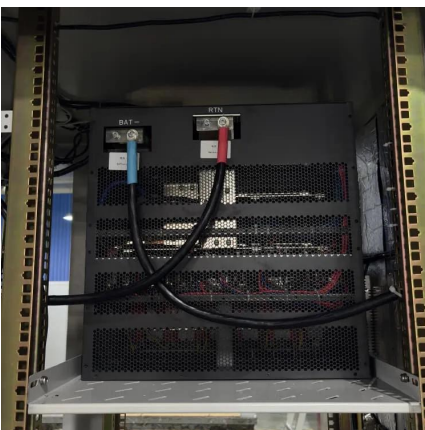
### **Portable Power Station vs Inverter - Key Differences Explained**

Sep 6, 2024 · An inverter converts DC power from a battery to AC power for various devices. A portable power station includes ...



### [Inverter vs. Inverter Charger: What's the ...](#)

Mar 17, 2025 · Confused about inverters and inverter chargers? Learn the key differences, discover their best uses, and find the perfect energy ...





## What is the difference between an inverter and a power station?

6 days ago · In this guide, we'll explore the differences between inverters and power stations and help you decide which one is right for your needs. What is an Inverter? An inverter is a device ...

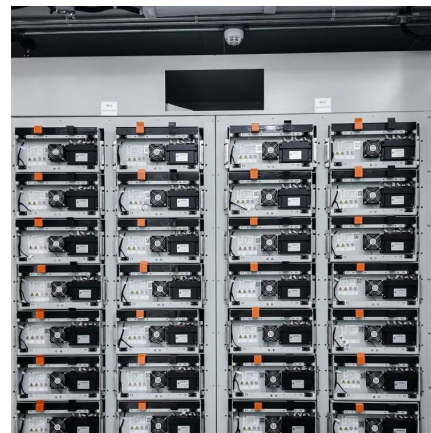


## [Charge Station Pro / Home Integration System staggered](#)

Apr 20, 2022 · The charge Station Pro does not have an integral inverter. As for tying it into an existing system, it will likely take a system designer that is a specialist in non-standard ...

## [Inverter vs Power Station: Key Differences Explained](#)

Jun 8, 2025 · Anatomy of a Power Station: Battery, Inverter, and Outputs Inside, you'll typically find a lithium battery, a built-in inverter, and multiple output ports--USB, AC plugs, and ...



## [GM Energy Vehicle-to-Home Solutions . Power Your Home ...](#)

1 day ago · Made to do much more than power up your V2H-capable GM EV, GM Energy's bidirectional charging is a new way to look at energy overall. Integrated, inspired design lets ...



## [Inverter vs. Portable Power Station: What's ...](#)

Nov 26, 2024 · Inverter: Generally less expensive than high-capacity portable power stations, especially if you already have a DC power source. ...

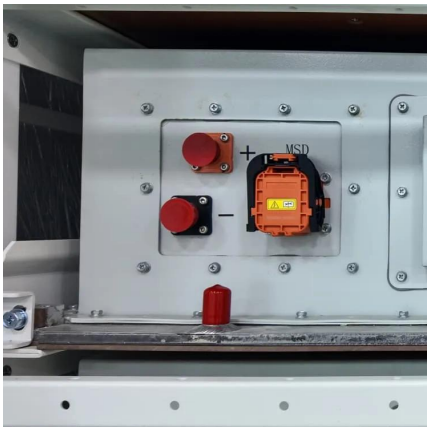


## [Portable Power Station vs. Inverter Difference](#)

Aug 19, 2024 · A power station has an inverter, but also uses a built-in battery, charge controllers, and other items to create an energy source you can take anywhere. Did you know that solar ...

## [What is the difference between an inverter ...](#)

6 days ago · In this guide, we'll explore the differences between inverters and power stations and help you decide which one is right for your needs. ...



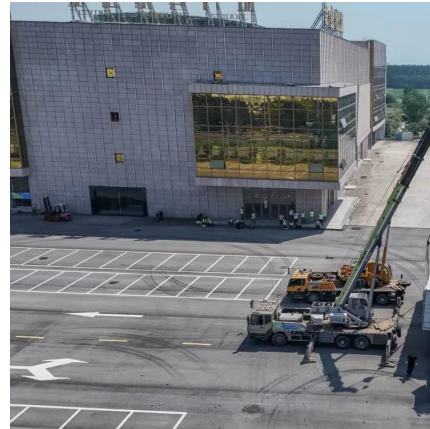
## [Portable Power Station vs. Inverter Difference](#)

Aug 19, 2024 · A power station has an inverter, but also uses a built-in battery, charge controllers, and other items to create an energy source ...



## Inverter vs. Portable Power Station: What's the Best Choice ...

Nov 26, 2024 · Inverter: Generally less expensive than high-capacity portable power stations, especially if you already have a DC power source. Portable Power Station: Can be more costly ...



## Contact Us

---

For technical specifications, project proposals, or partnership inquiries, please visit:  
<https://eiei.pl>

## Scan QR Code for More Information



<https://eiei.pl>