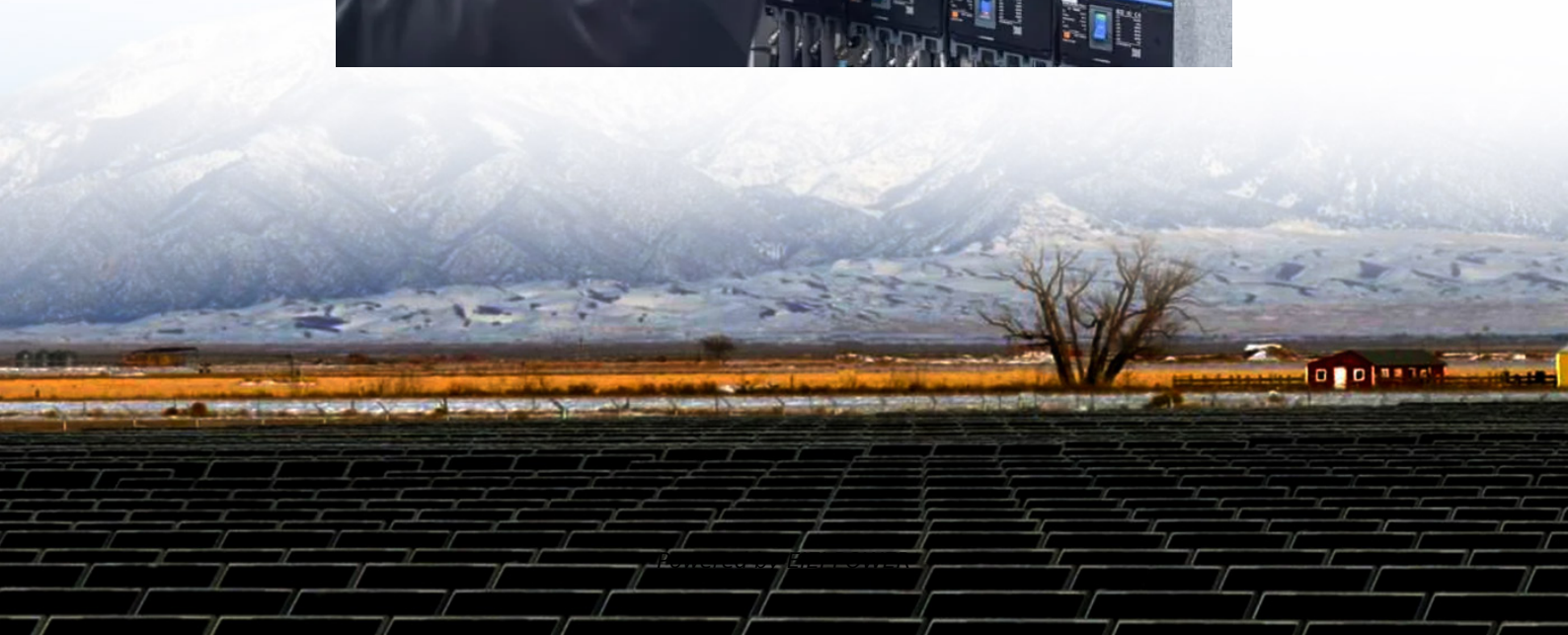


# Distance between inverter and PV panel





## Overview

---

How far can a solar panel be from an inverter?

Solar panels can typically be located up to 150 feet from an inverter. The distance largely depends on the type of wire and its gauge. The efficiency and functionality of a solar power system can be influenced by the distance between its components. For instance, the maximum cable length for solar panels varies based on the type of wire used.

How far should a solar panel inverter be from a guest house?

In conclusion, managing your solar panel inverter distance by storing the inverter and battery in a guest house and running the lines to the main panel over 100 feet is practical. This is true, provided the system is designed correctly.

Do solar panels need a solar inverter?

The distance between the solar panels and the inverter can have a significant impact on the system's efficiency. Ideally, the inverter should be installed close to the solar array to minimize voltage drop.

How do I choose the right solar panel inverter?

Choosing the right inverter is essential for effectively managing your solar panel inverter distance. At Advanced Energy Systems, we recommend using high-quality inverters like the Victron Quattro 48/10,000. These inverters are designed to handle higher input voltages.



## Distance between inverter and PV panel

---



### [How Far Can Solar Panels Be From Inverter](#)

Jul 11, 2023 · Final Thoughts on the Distance Between Solar Panels and Inverters In a perfect world, solar panels could be placed any distance from inverters and work just fine. But ...

### [How far away can solar panels be from inverter?](#)

Nov 21, 2023 · The distance between solar panels and the inverter in a photovoltaic (PV) system can vary depending on factors such as system design, cable length limitations, and electrical ...



### [Distances from panels to inverter , DIY Solar Power Forum](#)

Jul 18, 2023 · With high voltage dc used on modern solar systems the distance between panels and inverters can be quite far 100s feet possible. Inverters and batteries should be close to the ...



### **How Far Can Solar Inverter be From Main Panel? , Get Answers**

Jan 11, 2024 · The distance between the solar inverter and the main electrical panel, however, is a less well-known but crucial part of this procedure. Let us explore this often-overlooked ...



### Optimizing Solar Panel Distance from Inverter - A Detailed ...

Oct 30, 2023 · This guide covers factors affecting solar panel and inverter distance, wire types, efficiency implications, power loss, and practical recommendations.



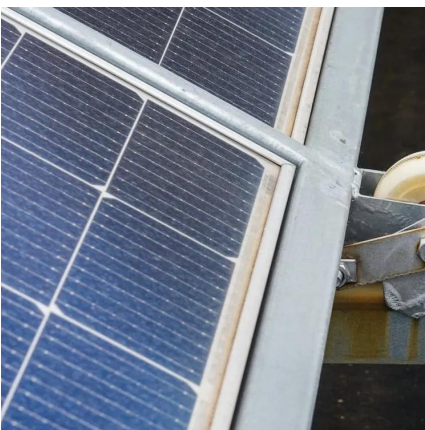
### [How Far Can Solar Panels Be From the Inverter?](#)

Jul 15, 2025 · The Relationship Between Solar Panels and Inverters Solar panels and inverters are integral parts of any solar energy system. The panels generate electricity from sunlight, ...



### [How Far Away Can Solar Panels Be From Inverter?](#)

Mar 9, 2025 · Solar panels can typically be located up to 150 feet from an inverter, depending on the type of wire and its gauge. The ideal distance between panels and inverters should be no ...





### [Optimizing Solar Panel Distance from Inverter ...](#)

Oct 30, 2023 · This guide covers factors affecting solar panel and inverter distance, wire types, efficiency implications, power loss, and practical ...



### **How Far Can Solar Panels Be from the Inverter? A Guide to ...**

Aug 2, 2023 · The distance between solar panels and the inverter can play a significant role when it comes to just how efficient your setup is, and how effective your solar panels are at replacing ...

### [Solar Panel Inverter Distance: How Far Can They Be from ...](#)

2 days ago · When considering your solar panel inverter distance, storing the inverter and batteries in a guest house is a practical decision, especially for safety and temperature control. ...



### [How Far Can Solar Panels Be From Inverter](#)

How Far Can Solar Panels Be from Inverter?What Does It Depend on How Far Can Solar Panels Be Away from Inverter?Why Is It Important to Know How Far Can Solar Panels Be Away from The Inverter?How Will You Know If Your Solar Panels Are Too Far Away from The Inverter?Final Thoughts on The Distance Between Solar Panels and InvertersIdeally, solar panels should be as close to the inverter and charge controller as possible. In situations where the panels are roof-mounted, this typically translates to anywhere



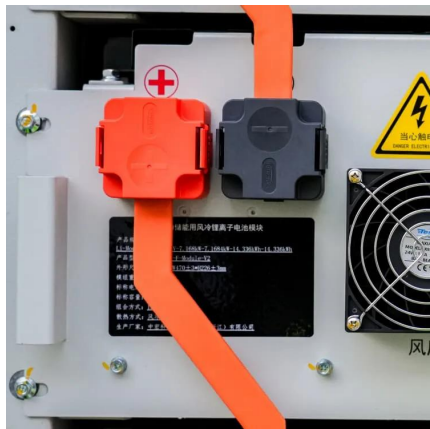
between 20 and 50 feet from a group of panels to the inverter. When it isn't possible to roof solar mount panels, and with excessive shade conditions clo...See more on solivace smartenergygap

## How Far Can Solar Inverter be From Main ...

Jan 11, 2024 · The distance between the solar inverter and the main electrical panel, however, is a less well-known but crucial part of this ...

### [How far away can solar panels be from ...](#)

Nov 21, 2023 · The distance between solar panels and the inverter in a photovoltaic (PV) system can vary depending on factors such as system ...



### [How Far Can Solar Panels Be from an Inverter? What You ...](#)

Jun 25, 2023 · Want to know the ideal distance between your solar panels and inverter? Learn about the recommended distance, the consequences of exceeding it, and solutions for long ...

## Contact Us

For technical specifications, project proposals, or partnership inquiries, please visit: <https://eiei.pl>



## Scan QR Code for More Information



<https://eiei.pl>