

Current source inverter DC side





Overview

What is current source inverter (CSI)?

H.J. Kim In Current Source Inverter (CSI), the input side of the inverter is connected to a DC current source and hence, the polarity of the input current remains the same. The polarity of the input DC voltage, however, determines the direction of average power flow through the inverter.

What is a current source inverter?

Compared with the voltage source inverter, the current source inverter has the boosting characteristics, and the AC side does not need a complex and bulky filter unit, but it also has the problem of current control of the DC energy storage inductor.

What are voltage-source and current-source inverters?

Voltage-source and current-source inverters are depicted in Fig. 3, where $V_{VS}(s)$ and $I_{VS}(s)$ in Fig. 3 (a) represent voltage and current of the voltage source; while $V_{CS}(s)$ and $I_{CS}(s)$ in Fig. 3 (b) stand for voltage and current of the current source, respectively.

Are current source type inverters still used?

However, current source type inverters are still in use for some applications. For example, in high-voltage direct current (HVDC) transmission, a DC current travels a long distance before being converted back into AC. This means a DC current is supplied via a large reactor.



Current source inverter DC side



Current Source Inverter

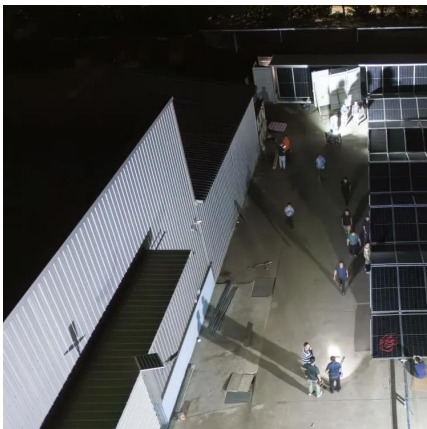
In Current Source Inverter (CSI), the input side of the inverter is connected to a DC current source and hence, the polarity of the input current remains the same.

Research on the Modulation and Control

...

Sep 20, 2023 · Compared to the voltage source inverter, the current source inverter (CSI) can boost voltage and improve filtering performance.

...



Basic circuit diagram of the inverter side of a ...

Basic circuit diagram of the inverter side of a current source converter (current-source-inverter, CSI). The rectifier side is replaced with a

...

A Single-Phase Single-Stage Current Source Inverter With ...

May 1, 2024 · For the conventional single-phase current source inverter (CSI), a large inductor is needed to stabilize the input current, which increases system volume, cost, and losses. In



this ...



[Current Source Inverter \(CSI\) : Know Definition, Working, ...](#)

A Current Source Inverter (CSI) is a type of power electronic device used to convert DC current into AC current while maintaining a constant current source at its input. Unlike Voltage Source ...

[Research on the Modulation and Control Strategy for a ...](#)

Sep 20, 2023 · Compared to the voltage source inverter, the current source inverter (CSI) can boost voltage and improve filtering performance. However, the DC side of CSI is not a real ...



[DC-AC Inverter Circuit](#)

Jul 26, 2018 · Since the DC side must be treated as a current source, a current source type inverter is used for HVDC applications. Thyristors also remain in use in ultra-large inverters.



Current Source Inverter (CSI) : Know ...

A Current Source Inverter (CSI) is a type of power electronic device used to convert DC current into AC current while maintaining a constant current

...



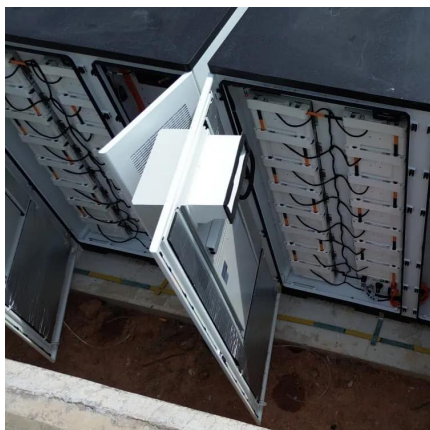
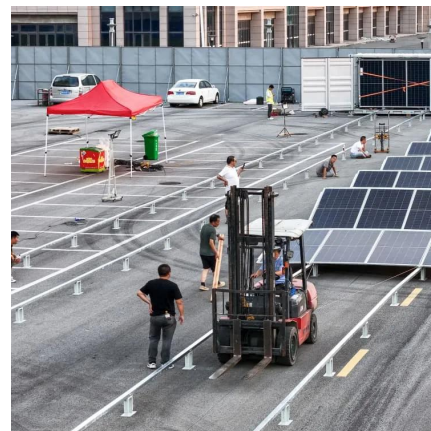
Current source inverter

Aug 16, 2024 · The left side of Fig. 4 connects to an external dc-current source with current flowing into the DC+ terminal and out of DC-terminal. The DC side current shows an inductive

...

Basic circuit diagram of the inverter side of a current source

Basic circuit diagram of the inverter side of a current source converter (current-source-inverter, CSI). The rectifier side is replaced with a controllable voltage source that aims to keep the DC



Single-Phase Grid-Connected Current Source Inverter Based ...

Mar 23, 2023 · This paper studies the control strategy of a single-phase five-switch current source grid-connected inverter with a DC chopper. Firstly, hysteresis control is performed on the ...



New current source inverters with DC-side commutation and load-side

Two different thyristor-type current source inverters (CSIs) with DC-side commutation and load-side energy recovery circuit are proposed, with analyses and explanations of the circuit ...



Modulation and control scheme for DC-link current ...

Dec 1, 2024 · The traditional three-phase current source inverter (CSI) cannot maintain a constant DC-link current, the charging and discharging process under different operating modes will ...

Contact Us

For technical specifications, project proposals, or partnership inquiries, please visit:
<https://eiei.pl>

Scan QR Code for More Information



<https://eiei.pl>