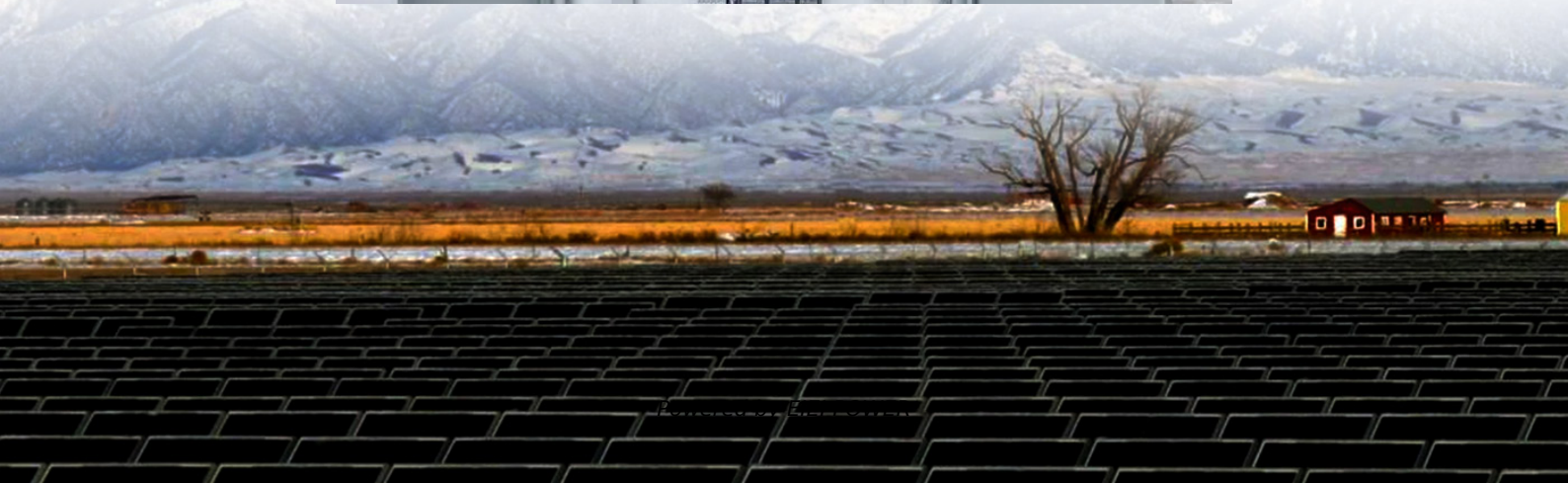


# **Constant voltage power supply to charge the solar container lithium battery pack**





## Overview

---

What is constant current - constant voltage charging (CC-CV)?

Constant Current - Constant Voltage Charging (CC-CV) is where a battery cell is charged at a constant current until it reaches the maximum charging voltage at which point the voltage is fixed and the current reduced. The following graph shows this relationship versus charge time.

How to charge a lithium ion battery?

Lithium batteries necessitate a charging algorithm that upholds a constant current constant voltage (CCCV) during the charging process. In other words, a Li-Ion battery should be charged by a fixed current level, usually 1 to 1.5 amperes, until it hits its concluding voltage. Lithium is one of the most important metal resources that we have today.

Why does a Li-ion battery need constant current source charging?

As the Li-ion battery begins to charge after a discharge phase, it is typically supplied with constant current source charging. This ensures not only the safe operating voltage of the battery but also the fast charging of the battery in the initial phase.

What does CC-CV stand for in battery charging?

It guarantees no Li-plating as E NE is constantly above 0V vs. Li/Li +. Constant Current - Constant Voltage Charging (CC-CV) is where a battery cell is charged at a constant current until it reaches the maximum charging voltage at which point the voltage is fixed and the current reduced.



## Constant voltage power supply to charge the solar container lithium

---



### [\[Full Guide\] How to Charge LiFePO4 Batteries](#)

Want your LiFePO4 lithium battery to last years longer? Discover the 3 proven ways to charge it safely and maximize its lifespan!

### [CATL EnerC+ 306 4MWH Battery Energy](#)

...

5 days ago · The EnerC+ container is a modular integrated product with rechargeable lithium-ion batteries. It offers high energy density, long ...



### **batteries**

Nov 12, 2025 · Introduction Various resources [1] [2] state that the optimal method of charging a lithium cell -- such as one found in a mobile phone --

...

### [\(PDF\) Design of Battery Charging System with ...](#)

Apr 3, 2024 · Multistage charge methods, namely Constant Current-Constant Voltage (CC-CV), are used to extend battery life, reduce charging time, ...



### [Constant Current Constant Voltage \(CCCV\) Application ...](#)

Nov 6, 2023 · Li-Ion battery typically requires constant current charging with a voltage limit at its rated voltage. Charger needs to provide constant current and constant voltage function (CCCV).



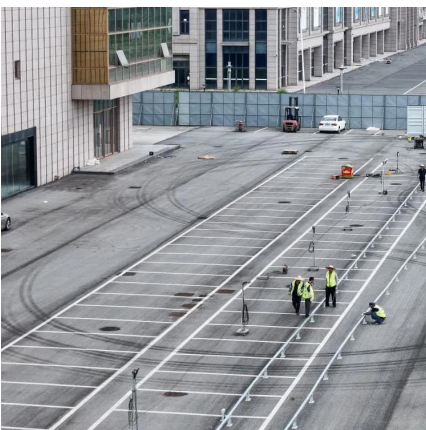
### [Energy storage container, BESS container](#)

4 days ago · Energy Storage Container Adding Containerized Battery Energy Storage System (BESS) to solar, wind, EV charger, and other renewable ...



### [How to Charge Different Types of Batteries ...](#)

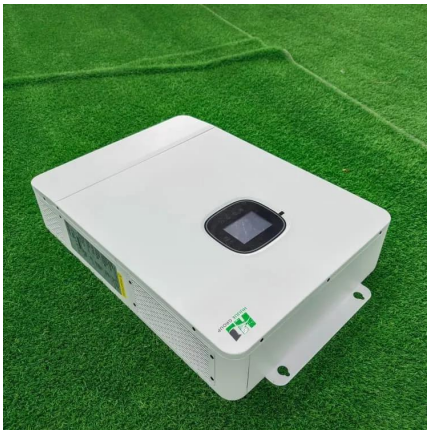
Jul 17, 2025 · When you handle charging with a power supply, you must set voltage and current precisely for each battery chemistry. The table below ...





### Constant Voltage Charging Requirements

Constant-voltage (often called constant-potential) chargers maintain nearly the same voltage input to the battery throughout the charging process, ...



### Lithium Battery Charging

Lithium batteries necessitate a charging algorithm that upholds a constant current constant voltage (CCCV) during the charging process. In other words, a Li-Ion battery should be ...

### Constant Power-Constant Voltage Battery Charging Based ...

Aug 19, 2024 · A constant power (CP)-constant voltage (CV) protocol for battery charging is implemented in a conventional boost converter with output filter (BOF) by imposing loss-free ...



### BU-409: Charging Lithium-ion

BU meta description needed Charging and discharging batteries is a chemical reaction, but Li-ion is claimed to be the exception. Battery ...



## What Are Lithium Battery Pack Charger Systems and How Do ...

Apr 11, 2025 · How Do Lithium Battery Pack Charger Systems Function? Lithium battery pack charger systems manage energy transfer to lithium-ion cells using control algorithms. They ...



## Constant voltage fast charge evaluation of lithium-ion battery ...

Jun 1, 2025 · In this work, full battery cells with NCM811 cathodes and LTO anodes were evaluated for fast charge, where the fast charge process consisted of constant voltage charge ...

## Constant Current - Constant Voltage ...

Feb 3, 2025 · Constant Current - Constant Voltage Charging (CC-CV) is where a battery cell is charged at a constant current until it reaches the ...



## Lithium Battery Charging

Lithium batteries necessitate a charging algorithm that upholds a constant current constant voltage (CCCV) during the charging process. In other ...



## [\(PDF\) Design of Battery Charging System with CC-CV ...](#)

Apr 3, 2024 · Multistage charge methods, namely Constant Current-Constant Voltage (CC-CV), are used to extend battery life, reduce charging time, and avoid the risk of overcharging.

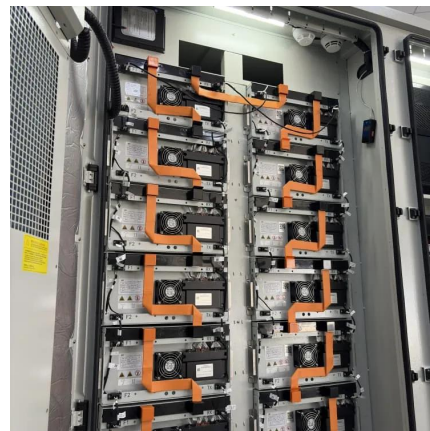


## **How to Charge Different Types of Batteries with a Power Supply**

Jul 17, 2025 · When you handle charging with a power supply, you must set voltage and current precisely for each battery chemistry. The table below demonstrates how different lithium ...

## [How to Charge a Lithium Battery with Solar Panel: A ...](#)

Nov 5, 2024 · Discover how to effortlessly charge lithium batteries using solar panels, perfect for camping and road trips. This comprehensive guide covers the benefits of solar energy, the ...



## **Battery Charging**

Apr 1, 2023 · The constant voltage charging cycle is divided into two separate segments: The current limit (sometimes called constant current) phase of charging is where the maximum ...



## TECHNICAL NOTE: CHARGING LITHIUM BATTERIES ...

Jul 5, 2024 · CHARGING LITHIUM BATTERIES USING A POWER SUPPLY During the development and testing phase of the battery pack, users may not have the proper charger ...



### Constant Voltage Charging Requirements

Constant-voltage (often called constant-potential) chargers maintain nearly the same voltage input to the battery throughout the charging process, regardless of the battery's state of charge. ...

### Battery Energy Storage System Components

1 day ago · Battery Management System (BMS) Every lithium-based energy storage system needs a Battery Management System (BMS), which ...



### Constant Current - Constant Voltage Charging

Feb 3, 2025 · Constant Current - Constant Voltage Charging (CC-CV) is where a battery cell is charged at a constant current until it reaches the maximum charging voltage at which point the ...



## Contact Us

---

For technical specifications, project proposals, or partnership inquiries, please visit:  
<https://eiei.pl>

### Scan QR Code for More Information



<https://eiei.pl>