

# Car connected to 220v inverter





## Overview

---

Can a car power inverter plug in an AC device?

Car power inverters are available in a variety of shapes, sizes, and capabilities to let you plug an AC device into your car, SUV, truck, or RV. Don't feel like buying a new car just to plug in your laptop?

Then we've got you covered.

How to choose a car power inverter?

**Battery Size and Health** – If your vehicle's battery is old or small, it might struggle to support larger car power inverters—especially when the engine isn't running. **Inverter Type** – Decide between pure sine wave and modified sine wave depending on what you're powering.

How do you wire a power inverter in a car?

There are two main ways to wire a power inverter in a car: through a cigarette lighter or accessory socket, or directly to the car battery. The first method is suitable for small inverters and devices, while the second method is more suitable for larger inverters and power-intensive equipment.

Can a power inverter be connected to a fuse box?

Alternatively, the inverter can be connected to the fuse box or power wire. A power supply socket may only provide a fraction of the inverter's total power capacity. Choosing the right power inverter for your car is essential for ensuring you have a reliable and safe source of AC power while on the road.



## Car connected to 220v inverter

---

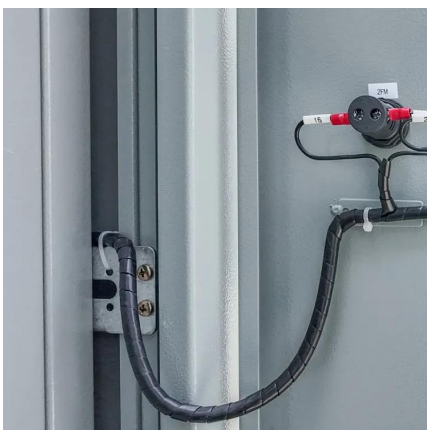


### [Inverter for Car: Everything You Need to Know Before You ...](#)

Jun 17, 2025 · When you're on the road and need a way to power your laptop, charge your phone, or even brew a cup of coffee, an inverter for car becomes more than just a handy gadget--it's ...

### [9 Best Car Power Inverters](#)

Jan 6, 2025 · Car power inverters are great for a life on the road. Depending on power capacity, they can run phones, computers, or even small appliances right from your car.



### [300W Car Inverter DC 12V to 220V Power ...](#)

Features of a 300W Car Inverter DC 12V to 220V Modified Car Socket Adapter with 4 USB Ports Auto Charger: Effective Charging Outlet Cars ...

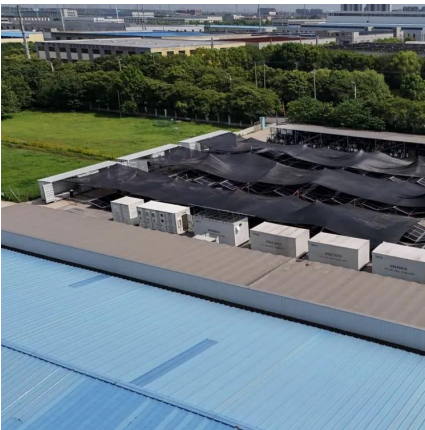
### [Best Car Inverter 12V to 220V - leaptrend](#)

Mar 12, 2025 · Best Car Inverter 12V to 220V A reliable 12V to 220V car inverter is a must-have for road trips, camping adventures, or emergency power needs. Whether you're charging ...



### Installing a Power Inverter in Your Car: Step-by-Step Guide ...

Jun 24, 2025 · Learn how to choose the right power inverter and install it safely with our comprehensive guide. Understand wattage requirements, wire gauge selection, solar panel ...



### [Best Car Inverter 12V to 220V - leaptrend](#)

Mar 12, 2025 · Best Car Inverter 12V to 220V A reliable 12V to 220V car inverter is a must-have for road trips, camping adventures, or emergency ...



### [Best 12V to 220V Power Inverters for Cars, Homes, and ...](#)

Sep 6, 2025 · Power inverters convert DC power from a 12V battery source into usable AC power at 220V, making them essential for cars, RVs, and off-grid applications. This article reviews ...





### [Car Charger or Car Inverter? Which is Best?](#)

Jan 19, 2023 · The car inverter converts the car power supply into an output voltage of 220V, which is used to charge notebooks, car refrigerators, and ...

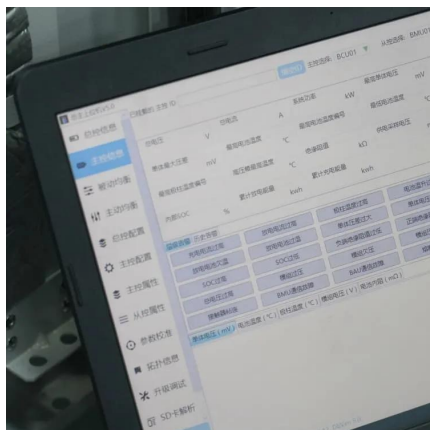


### [Best 12V to 220V Power Inverters for Cars, ...](#)

Sep 6, 2025 · Power inverters convert DC power from a 12V battery source into usable AC power at 220V, making them essential for cars, RVs, and ...

### [Wiring Power Inverters In Cars: A Step-By-Step Guide](#)

Jul 23, 2025 · A comprehensive guide to wiring power inverters in cars, covering everything from safety precautions to step-by-step instructions for a secure and efficient installation.



### [Installing a Power Inverter in Your Car: Step ...](#)

Jun 24, 2025 · Learn how to choose the right power inverter and install it safely with our comprehensive guide. Understand wattage requirements, ...



### [How to Install a Car Inverter?](#)

May 24, 2024 · The car inverter can convert DC 12V direct current into AC 220V alternating current, which is the same as the mains power, for use ...



### **Car Inverter, 12v DC to AC Power Inverter for Car , inverter**

80w car power inverter, modified sine wave, DC 12v input to 220V AC output, advanced circuit design, high conversion efficiency up to 90%. Rated power 80w, peak power 160w. Adopting ...

### [Best 12/220V inverters for car in 2025](#)

The inverter makes it possible to connect any electrical or electronic device to the on-board car network that requires a variable current intensity of 110/220 volts.



### [How to Choose a Car Inverter?](#)

Aug 13, 2019 · A car inverter is a device that can convert 12V or 24V DC energy from a car battery into 220V or 110V AC power, which is the same ...



### [How to Install a Car Inverter?](#)

May 24, 2024 · The car inverter can convert DC 12V direct current into AC 220V alternating current, which is the same as the mains power, for use by general electrical appliances. It is a ...

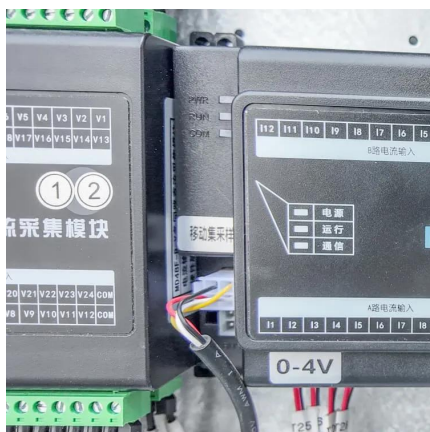
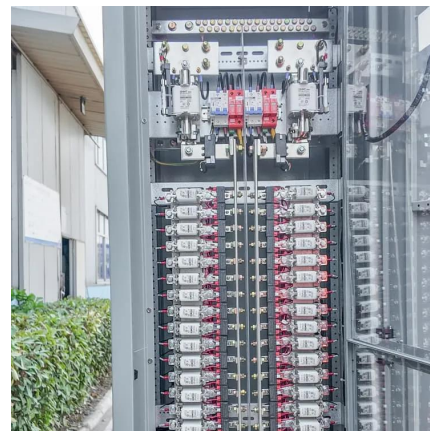


### **Converting Car Power to 220 Volts ?A Guide to Car Power Inverters**

May 31, 2025 · Step 3: Connect the Power Inverter to Your Car Battery Now it's time to connect the power inverter to your car battery. Connect the red cable from the power inverter to the ...

### [2000W Car Inverter, DC 12V to AC 110V/220V](#)

2000 watt car inverter, peak power 4000w, DC 12V input and AC 100V/220V output. Modified sine wave inverter with 4 USB port output DC 5V, ...



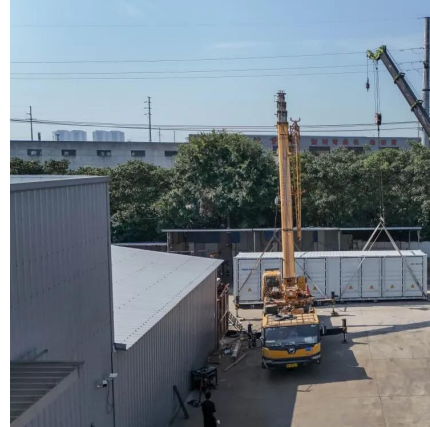
### [Ceptics 200W Car Laptop Charger/Power ...](#)

Ceptics 200W Car Laptop Charger/Power Inverter with 2 USB (3.1A Max) + 1 C Type (1 \* 18W PD) Smart USB Charging Ports, 12V DC to 220V AC, 2X ...



### [Will a Car Inverter Damage Your Car Battery?](#)

Aug 18, 2019 · A car inverter can convert 12V DC to 110V/220V AC. It is very useful on the go. But many people will be worried about if car inverters ...



### [Wiring Power Inverters In Cars: A Step-By ...](#)

Jul 23, 2025 · A comprehensive guide to wiring power inverters in cars, covering everything from safety precautions to step-by-step instructions ...

### [How to Install a Power Inverter in a Car?](#)

May 9, 2025 · It transforms the 12v or 24v of the current from a battery (direct current) to 220v (alternating current). Power inverters are used in various ...



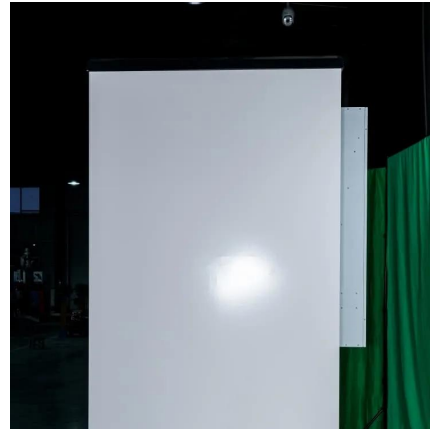
### [How to Connect Power Inverter to Car Battery](#)

Apr 3, 2025 · Learn how to connect a power inverter to a car battery with our easy-to-follow step-by-step guide. Keep your devices powered on the go.



### [200W Car Inverter, DC 12V/24V to AC 220V](#)

Car inverters, which convert a vehicle's 12V DC power to 110V or 220V AC power, can vary in noise level depending on several factors, including ...



### [How to Install a Power Inverter in a Car?](#)

May 9, 2025 · It transforms the 12v or 24v of the current from a battery (direct current) to 220v (alternating current). Power inverters are used in various applications, from small power ...

## Contact Us

---

For technical specifications, project proposals, or partnership inquiries, please visit:  
<https://eiei.pl>

**Scan QR Code for More Information**



<https://eiei.pl>