

Car 220v inverter





Overview

What is a 12V 220V car inverter?

Equipped with intelligent cooling fans, the car inverter 12V 220V has an output voltage of AC 100V/220V, and multiple sockets can be optional. The car charger power inverter with a compact shell has low voltage protection, overcurrent protection, short circuit protection, etc. 1500w car inverter, modified sine wave, with 4 USB ports and LCD screen.

What is a 120W car inverter?

120w car inverter, DC 12V to AC 220V, peak power of 300w, aluminum alloy shell, power conversion efficiency up to 90%. The power inverter for car has overheat protection, overload protection, short circuit protection and other functions, the working temperature is (-10°C, 50°C), and there is no noise when working.

How to choose a car power inverter?

Power matching: The size of the car power inverter is measured by its maximum continuous output (unit: tile). This rated value must be greater than or equivalent to the total power required for the laptop you planned. If the power adapter of the laptop is 65W. Then you need at least one 65W or more power the 12v car inverter.

What is a 220V 240V power inverter used for?

[Various use] This 220V-240V power inverter is made of high-quality metal material, and the rugged housing ensures safe use. It can be used for camping, outdoor, vacation, road trips, remote workplaces, and even for household items.



Car 220v inverter

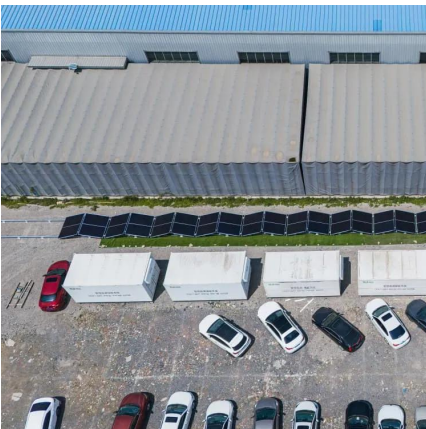


[Best Car Inverter 12V to 220V - leaptrend](#)

Mar 12, 2025 · Best Car Inverter 12V to 220V A reliable 12V to 220V car inverter is a must-have for road trips, camping adventures, or emergency ...

Keenso Power Inverter 500W DC 12V to AC 220V-240V Peak 600W Car

Dec 30, 2018 · About this item [Various use] This 220V-240V power inverter is made of high-quality metal material, and the rugged housing ensures safe use. It can be used for camping, ...



[Reliable Car Inverters](#)

Shop reliable car inverters for home and travel. Wholesale prices and factory quality. Convert DC to AC with efficiency and safety. Perfect for emergencies.

[Best 12V to 220V Power Inverters for Cars, ...](#)

Sep 6, 2025 · Power inverters convert DC power from a 12V battery source into usable AC power at 220V, making them essential for cars, RVs, and ...



[Pure Sine Wave Inverter 12V to 220V 3000W ...](#)

Product Description This pure sine wave inverter is a current converter that converts 12V/24V/48V/60V DC to 220V AC. The output power can be ...



[120W Car Power Inverter, DC 12V to AC 220V](#)

120w car inverter, DC 12V to AC 220V, peak power of 300w, aluminum alloy shell, power conversion efficiency up to 90%. The power inverter for car has overheat protection, overload ...



[120W Car Power Inverter, DC 12V to AC 220V](#)

120w car inverter, DC 12V to AC 220V, peak power of 300w, aluminum alloy shell, power conversion efficiency up to 90%. The power inverter for car ...





Car Inverter, 12v DC to AC Power Inverter for Car , inverter

120w car inverter, DC 12V to AC 220V, peak power of 300w, aluminum alloy shell, power conversion efficiency up to 90%. The power inverter for car has overheat protection, overload ...

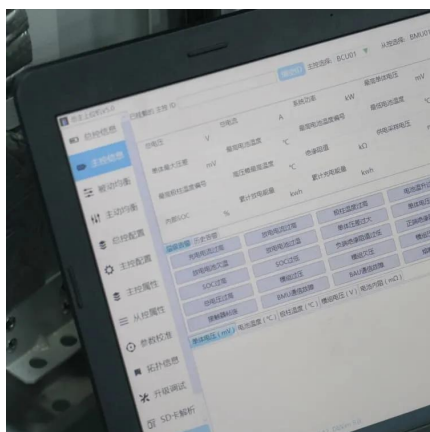
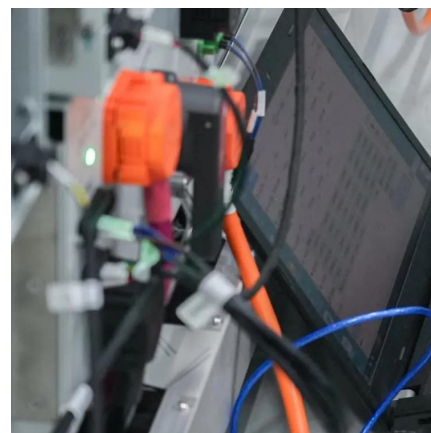


Car Power Inverters 220v

Our Car Power Inverters 220v offers exceptional quality and style within the Power Inverter category. When selecting a power inverter for electronic appliances, consider factors like ...

Best Car Inverter 12V to 220V - leaptrend

Mar 12, 2025 · Best Car Inverter 12V to 220V A reliable 12V to 220V car inverter is a must-have for road trips, camping adventures, or emergency power needs. Whether you're charging ...



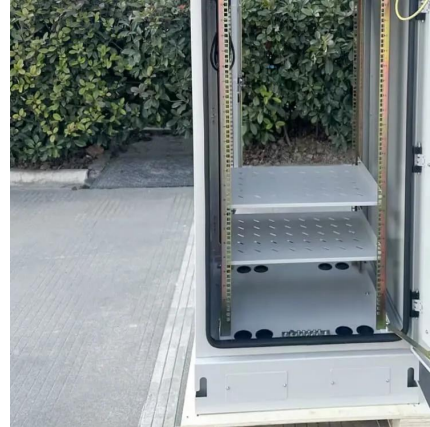
Pure Sine Wave Inverter 12V to 220V 3000W-6000W Peak ...

Product Description This pure sine wave inverter is a current converter that converts 12V/24V/48V/60V DC to 220V AC. The output power can be used for a variety of devices, ...



[9 Best Car Power Inverters](#)

Jan 6, 2025 · Car power inverters are great for a life on the road. Depending on power capacity, they can run phones, ...



[High-Power Car Inverter 12V DC to 220V AC Converter](#)

Nov 3, 2025 · Power inverter converts 12V or 24V DC from battery or car lighter to AC 110V or 220V household power, with USB port and AC outlet for fast charging the electronic devices.

[9 Best Car Power Inverters](#)

Jan 6, 2025 · Car power inverters are great for a life on the road. Depending on power capacity, they can run phones, computers, or even small appliances right from your car.



[Best 12V to 220V Power Inverters for Cars, Homes, and ...](#)

Sep 6, 2025 · Power inverters convert DC power from a 12V battery source into usable AC power at 220V, making them essential for cars, RVs, and off-grid applications. This article reviews ...



Contact Us

For technical specifications, project proposals, or partnership inquiries, please visit:
<https://eiei.pl>

Scan QR Code for More Information



<https://eiei.pl>