

# **Canberra Rainproof Power Station Generator BESS**





## Overview

---

Is Canberra building a big battery in Williamsdale?

The ACT Government is building a big battery in Williamsdale. Construction has begun, in partnership with Eku Energy. This project is part of larger efforts to make Canberra a cleaner, greener city. Construction has begun the Williamsdale Battery Energy Storage System (BESS).

Will the Bess power Canberra in 2026?

Scheduled to begin operations in 2026, the BESS will store enough renewable energy to power one-third of Canberra for two hours during peak demand, playing a pivotal role in achieving the ACT's net-zero emissions target by 2045.

What is Bess & evoenergy?

A partnership between the ACT Government and global energy storage leader Eku Energy, the 250 megawatts BESS will be part of the Evoenergy distribution network. It will store enough renewable energy to power one-third of Canberra for two hours during peak demand.

When will a solar battery be operational in Canberra?

The battery is expected to be operational in 2026 and will be able to store enough renewable energy to power one-third of Canberra for two hours during peak demand periods.



## Canberra Rainproof Power Station Generator BESS

---



### [Construction begins on ACT's Big Battery](#)

Nov 25, 2024 · The Williamsdale BESS is part of the ACT Government's Big Canberra Battery project and will play a critical role in supporting the ACT's transition to renewable energy and ...

### [Construction begins on Williamsdale Battery in Canberra](#)

Nov 22, 2024 · The ACT Government and Eku Energy have begun construction on the 250MW/500MWh Williamsdale Battery Energy Storage System (BESS), which will support the ...



### [Torrens Island Power Station BESS](#)

The BESS is connected to the grid via the existing Torrens Island A Station substation Unit A4 connection and can power approximately 75,000 South Australian homes for 1 hour. As ...



### [Net zero milestone: Construction starts on Williamsdale ...](#)

Nov 23, 2024 · A partnership between the ACT Government and global energy storage leader Eku Energy, the 250 megawatts BESS will be part of the Evoenergy distribution network. It will ...



### [Construction begins on ACT's 250 MW Williamsdale BESS](#)

Feb 11, 2025 · The Australian Capital Territory (ACT) government and Eku Energy have commenced construction of the Williamsdale Battery Energy Storage System (BESS), a 250 ...



### [BESS Systems for Construction & Off-Grid ...](#)

4 days ago · Industrial battery energy storage systems (BESS) trusted by 200+ construction, mining & industrial sites across Australia.



### [Big Canberra Battery - Williamsdale BESS](#)

Nov 11, 2025 · The large-scale battery energy storage system (BESS) will provide at least 250 megawatts (MW) of power. This is enough energy to power one-third of Canberra for two ...





## [Williamsdale Battery Energy Storage System](#)

Explore the Williamsdale Battery Energy Storage System (BESS) project by Eku Energy, a 250MW/500MWh facility in Canberra. This project ...



## [ACT government and Eku begin Williamsdale ...](#)

Nov 25, 2024 · The Australian Capital Territory (ACT) government and Eku Energy have officially commenced construction of the Williamsdale ...

## [ACT government and Eku begin Williamsdale BESS ...](#)

Nov 25, 2024 · The Australian Capital Territory (ACT) government and Eku Energy have officially commenced construction of the Williamsdale Battery Energy Storage System (BESS). The ...



## [Torrens Island Power Station BESS](#)

The BESS is connected to the grid via the existing Torrens Island A Station substation Unit A4 connection and can power approximately 75,000 ...



## [Work begins on Williamsdale Battery Energy Storage System](#)

Nov 22, 2024 · The Williamsdale BESS is a large-scale 250megawatts (MW) battery. It will store enough renewable energy to power one-third of Canberra for two hours during peak demand.

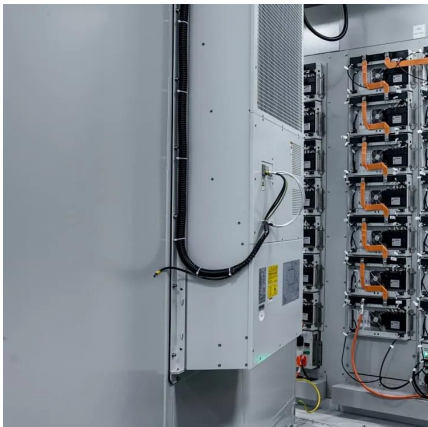


## [Construction begins on ACT's Big Battery](#)

Nov 25, 2024 · The Williamsdale BESS is part of the ACT Government's Big Canberra Battery project and will play a critical role in supporting the ...

## **BESS Systems for Construction & Off-Grid Power - Battery ...**

4 days ago · Industrial battery energy storage systems (BESS) trusted by 200+ construction, mining & industrial sites across Australia.



## [Williamsdale Battery Energy Storage System](#)

Explore the Williamsdale Battery Energy Storage System (BESS) project by Eku Energy, a 250MW/500MWh facility in Canberra. This project enhances energy security and reliability, ...



### [Net zero milestone: Construction starts on ...](#)

Nov 23, 2024 · A partnership between the ACT Government and global energy storage leader Eku Energy, the 250 megawatts BESS will be part ...



### [Construction begins on Williamsdale Battery ...](#)

Nov 22, 2024 · The ACT Government and Eku Energy have begun construction on the 250MW/500MWh Williamsdale Battery Energy ...

### [Work begins on Williamsdale Battery Energy ...](#)

Nov 22, 2024 · The Williamsdale BESS is a large-scale 250megawatts (MW) battery. It will store enough renewable energy to power one-third of ...



## Contact Us

---

For technical specifications, project proposals, or partnership inquiries, please visit: <https://eiei.pl>



## Scan QR Code for More Information



<https://eiei.pl>