

Can the inverter run at full power





Overview

Does the inverter run all the time?

The inverter obviously does not run all the time-- it may be on but that means nothing. He's talking about when plugged into shore power so bringing up the inverter is irrelevant. Suspect he has a gasser A with converter only. Thanks Everyone. We are on the road, I should have some time in the next few days to post the make and model.

Does inverter efficiency really matter?

Let's say you have a 5kW solar system and you're using an inverter with 92% efficiency. That means you're only getting 4.6kW of usable power. Compare that with an inverter that has 97% efficiency—you'd be getting 4.85kW. Over a year, that difference becomes hundreds of kilowatt-hours. So yes, inverter efficiency really matters.

What do you use the power inverter for?

I use the power inverter to provide light and power to camp for small appliances like my alarm clock, laptop, and electric lighting. Since 2004, I have always run a power inverter off my truck, that converts 12 volt DC power into 120 volt household power.

Do you use a power inverter with your truck?

Since 2004, I have always run a power inverter off my truck, converting 12 volt DC power into 120 volt household power. I use it extensively through the summer season to provide light and power to camp for small appliances like my alarm clock, laptop, and electric lighting. Electric lighting really beats any other camp lighting.



Can the inverter run at full power

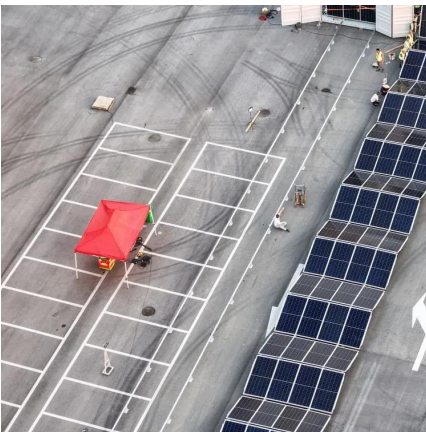


[Inverter Runtime: Can It Run 24/7? Discover ...](#)

May 21, 2024 · Curious if your inverter can run 24 hours a day? Find out the facts about inverter runtime, efficiency, and maintenance to keep it ...

[Can Solar Inverters Operate Continuously?](#)

Jul 2, 2024 · An inverter can run 24 hours a day without any issues. As long as there is a power supply and no underlying problems, the inverter will continue to operate effectively and ...



Does a Solar Inverter Run Continuously? What Happens If It ...

A solar inverter can operate all day or 24 hours a day, depending on the system design and usage scenario. However, "constant operation" does not always mean the inverter is at full ...

[What percentage of inverter capacity can you run ...](#)

Apr 5, 2021 · Inverters are most efficient at 25-30% of rated, i.e., when you see a rating that says, "up to 92% efficient," you're going to see that at about 25-30% rated. e.g.: 3000W inverter



is ...



[Can I leave my solar inverter on all the time](#)

Oct 14, 2024 · Continuous Operation: Solar inverters are designed to run continuously, meaning you can leave them on without concern for damage. Efficiency: Keeping your inverter on all the ...

[How Long Can You Run an Inverter Generator?](#)

May 28, 2025 · Most Inverter Generators are rated for a total operational life of 1,500-2,500 hours. On a full tank of gas, they typically run for 6 to 18 hours, subject to the load and fuel ...



[How Long Can I Run The Power Inverter On ...](#)

Mar 18, 2025 · How long does an inverter that uses battery power actually last? This article will delve into this question and provide knowledge and ...





Inverter Runtime: Can It Run 24/7? Discover the Truth! -- EASUN POWER

May 21, 2024 · Curious if your inverter can run 24 hours a day? Find out the facts about inverter runtime, efficiency, and maintenance to keep it running smoothly without issues.



[How Long Can You Run an Inverter ...](#)

May 28, 2025 · Most Inverter Generators are rated for a total operational life of 1,500-2,500 hours. On a full tank of gas, they typically run for 6 to 18 ...

[Can I leave my solar inverter on all the time](#)

Oct 14, 2024 · Continuous Operation: Solar inverters are designed to run continuously, meaning you can leave them on without concern for ...



[Should an inverter run at 100% or less?](#)

Mar 2, 2024 · Hello all, I have read conflicting reports as to whether an inverter (Hybrid or On-grid) should be run at 100% capacity. Some people say it is OK to run your inverter 'flat out'. Some ...



[How Long Can I Run The Power Inverter On My Battery?](#)

Mar 18, 2025 · How long does an inverter that uses battery power actually last? This article will delve into this question and provide knowledge and calculations.

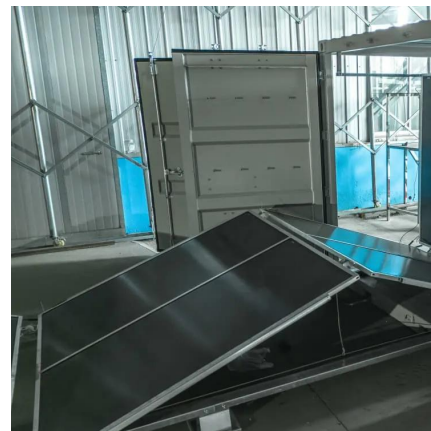


Powering On: The Pros and Cons of Leaving Your Inverter On ...

Apr 12, 2025 · When it comes to using an inverter, one of the most common questions that arises is whether it's safe to leave it on all the time. While it may seem like a convenient solution to ...

[Inverter Efficiency: Understanding How Much Power You're ...](#)

Jul 21, 2025 · Conclusion When it comes to inverter efficiency, small differences can make a big impact. Whether you're powering a tiny cabin, a suburban home, or an off-grid homestead, ...



Contact Us

For technical specifications, project proposals, or partnership inquiries, please visit:
<https://eiei.pl>



Scan QR Code for More Information



<https://eiei.pl>