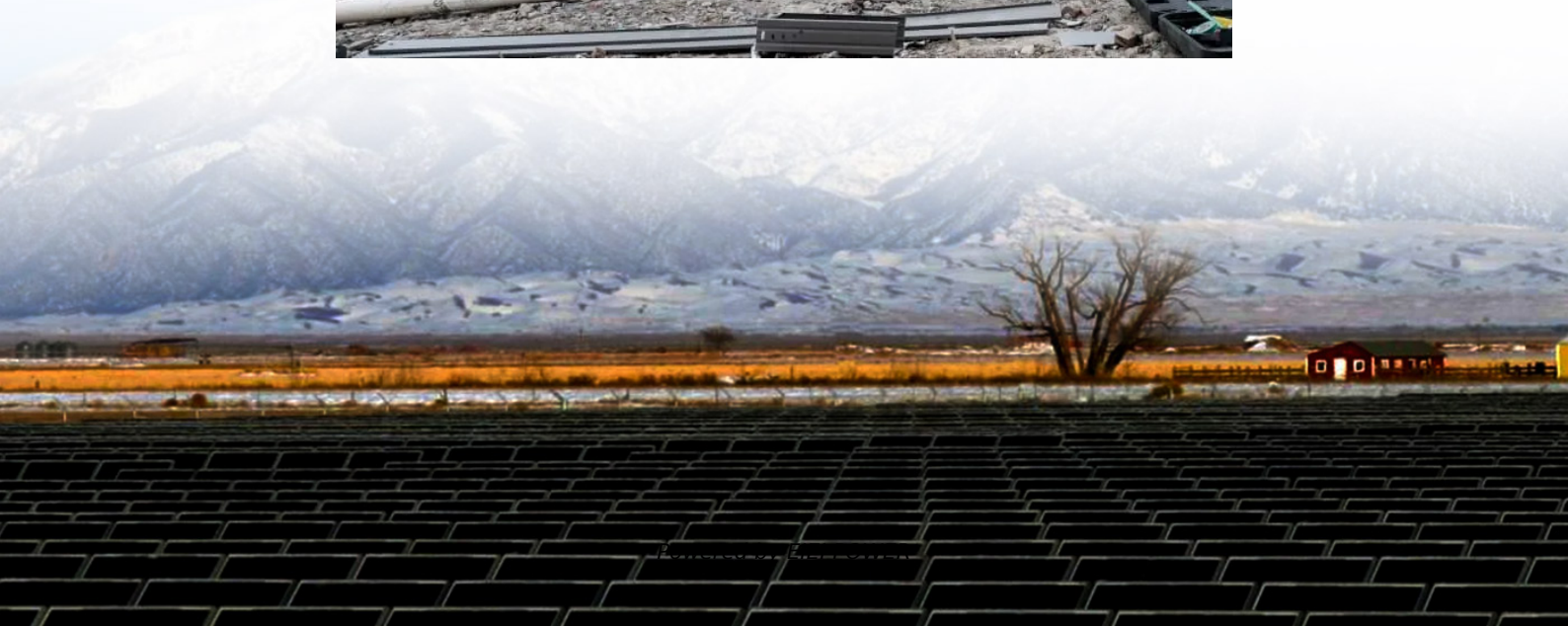


# Can the inverter 16 8v battery be used





## Overview

---

Which battery inverter should I Choose?

**Lead-Acid Batteries:** Common in various applications, inverters that provide a steady output and overcharge protection are ideal. **Lithium-Ion Batteries:** Require an inverter that offers precise voltage regulation due to their sensitivity to overcharging, ensuring longevity and safety.

Can a 12V battery be used as an inverter?

If you are using a 12V battery, then the input voltage of the inverter must match the battery voltage. If the specifications of the battery and the inverter do not match, the system will not operate stably and may even damage the equipment. In addition, choose the right inverter power and battery capacity for your home or commercial needs.

Are lithium batteries good for inverters?

Lithium batteries offer much higher energy density, longer life cycles, reduced weight, and faster charging times than traditional lead-acid batteries. This makes them ideal for both small and large-scale inverter applications. Part 2. How does a lithium battery power an inverter system?

Here's how the process works:.

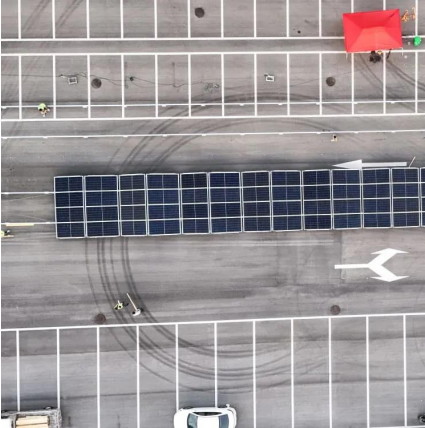
Do inverters and batteries need to match?

The inverter and batteries must match in terms of voltage, capacity, and power output. If you are using a 12V battery, then the input voltage of the inverter must match the battery voltage. If the specifications of the battery and the inverter do not match, the system will not operate stably and may even damage the equipment.



## Can the inverter 16 8v battery be used

---



### [Can a 16 8v lithium battery be connected to an inverter](#)

Yes, lithium-ion batteries can be used to power inverters. They are compatible with most inverters designed for renewable energy applications. Lithium-ion batteries offer significant ...

### **How to Safely Connect a Battery to an Inverter: A Step-by ...**

Apr 13, 2025 · Learn how to safely connect your batteries to your inverter with our guide. Avoid common wiring mistakes to optimize performance and extend system life.



### [Can the Inverter 16 8V Battery Be Used Applications and ...](#)

SunContainer Innovations - Summary: The 16.8V inverter battery is a versatile power solution widely used in renewable energy systems, portable devices, and industrial equipment. This ...



### [Can the inverter 16 8v battery be used](#)

Nov 2, 2003 · Lithium NG 12,8V battery manual or overcharged, the battery can release a harmful mixture of gases, such as phosphate. o The battery can be charged between 5 °C and 50 °C. ...



### [Can I Use an Inverter to Charge a Battery](#)

May 4, 2025 · Learn how using an inverter can charge your battery effectively and safely, ensuring your power needs are met confidently and reliably.

### [How to Safely Connect a Battery to an ...](#)

Apr 13, 2025 · Learn how to safely connect your batteries to your inverter with our guide. Avoid common wiring mistakes to optimize performance ...



### [Lithium Battery for Inverter: Pros, Specs, and Tips](#)

Jun 24, 2025 · Lithium batteries offer top performance and long life for inverters. This guide covers all you need to know for your power storage needs.



## [Battery Compatibility](#)

Jul 16, 2025 · Battery Compatibility Victron inverter/chargers, inverters, chargers, solar chargers, and other products work with common lead-based battery technologies such as AGM, Gel, ...

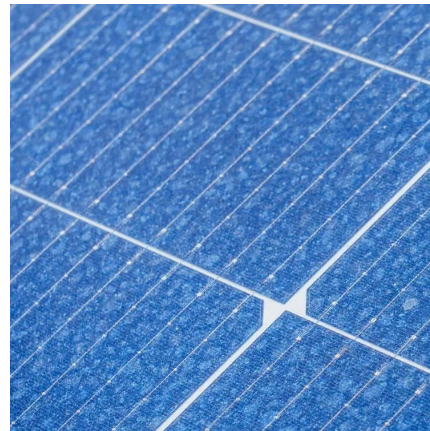


## [Lithium Battery for Inverter: Pros, Specs, and ...](#)

Jun 24, 2025 · Lithium batteries offer top performance and long life for inverters. This guide covers all you need to know for your power storage ...

## **Importance of Compatibility Between Inverter and Lithium Battery**

Oct 13, 2024 · Among these innovations, lithium batteries have emerged as the preferred choice for backup power due to their efficiency, longevity, and compact design. However, one key ...



## [Compatibility of Lithium-Ion Batteries with ...](#)

Aug 29, 2024 · Learn how to seamlessly integrate lithium-ion batteries ...



## Compatibility of Lithium-Ion Batteries with Existing Inverters

Learn how to seamlessly integrate lithium-ion batteries with existing inverters for efficient and reliable power solutions. Maximize energy storage with Invertek Energy.



### [Can I use a battery with 16.8V](#)

Sep 5, 2021 · Hy I have a lithium titanate battery. it is a 6S with a maximum voltage of 16,8V In the product discription of victron parts is stated that the maximum imput voltage is 17V can I for ...

### [Importance of Compatibility Between Inverter ...](#)

Oct 13, 2024 · Among these innovations, lithium batteries have emerged as the preferred choice for backup power due to their efficiency, longevity, ...



## Contact Us

---

For technical specifications, project proposals, or partnership inquiries, please visit:  
<https://eiei.pl>



## Scan QR Code for More Information



<https://eiei.pl>