

Can a 12v inverter carry 500 watts





Overview

Can a 12 volt car battery support a high power inverter?

Typically, a 12-volt car battery can support an inverter with a power range of about 150 watts to 1500 watts. Please note, however, that car batteries are not suitable for driving high power inverters for extended periods of time, which may cause damage to the battery.

How long will a 12V battery last with an inverter?

As a simple rule, to calculate how long a 12v deep-cycle battery will last with an inverter multiply battery amp-hours (Ah) by 12 to find watt-hours, and divide by the load watts to find run time hours. Finally, multiply run time hours by 95% to account for inverter losses. Introduction to Solar Power Battery Inverters - What Do Inverters Do?

.

Can a deep cycle battery run a 1000 watt inverter?

If a high power inverter is required (e.g. 1000 Watts or more), it is advisable to have a deep cycle battery. These batteries are designed to be discharged for long periods of time and are better able to meet high power demands without causing damage to the car's starting battery. FAQs. Can I run a 2000 watt inverter on a car battery?

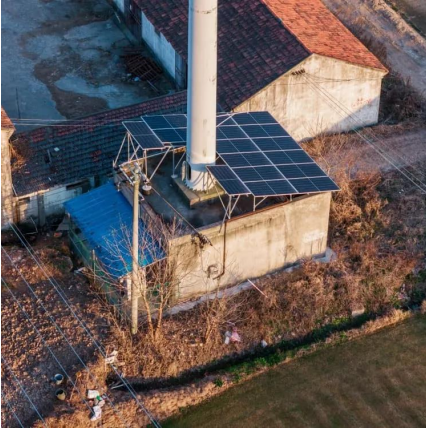
.

How many Watts Does a 100W inverter use?

Typically, inverters have an efficiency rating of around 90%. It means that a 100W AC load would draw approximately 110 DC watts from the battery to function properly. To calculate the total AC watts provided by your battery, multiply the inverter efficiency by the battery's watt-hour capacity.



Can a 12v inverter carry 500 watts

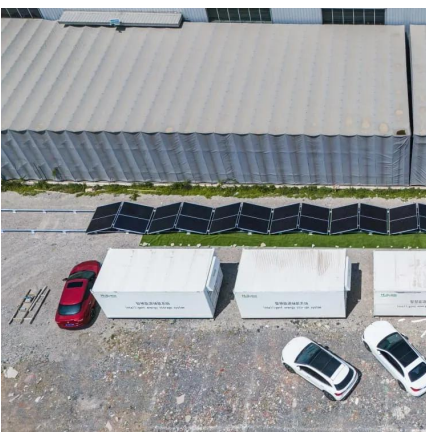


[How long will a 12v battery last with inverter](#)

Apr 30, 2025 · How long will a 12v battery last with an inverter? Here is a completed explication on the factors that affect the run time of 12v battery and the calculation formula.

[How Long Will a 12v Battery Last With 500w Inverter?](#)

Jun 8, 2023 · How long a 12v battery last with 500W inverter. In short, 12v battery will last between 40 minutes to 7 hours running a 500-watt inverter.



[How Long Can a 500W Inverter Power Your Devices?](#)

How Do You Calculate the Runtime of a 500W Inverter? Use this formula: $(\text{Battery Capacity in Ah} \times \text{Battery Voltage} \times \text{Inverter Efficiency}) \div \text{Total Load in Watts}$. A 12V 100Ah lithium battery with ...

[How Big of an Inverter Can My Car Battery ...](#)

Mar 26, 2025 · When considering connecting an inverter to your car battery, the first question we need to clarify is: how much power can your car

...

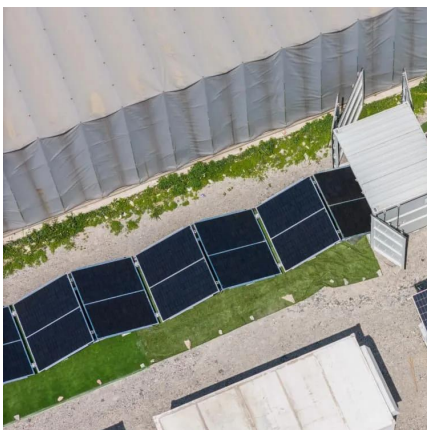


How Long Will A 12v Battery Last With An Inverter? Calculator

Jan 11, 2025 · As a simple rule, to calculate how long a 12v deep-cycle battery will last with an inverter multiply battery amp-hours (Ah) by 12 to find watt-hours, and divide by the load watts ...

What Battery for a 500-Watt Inverter

Sep 16, 2025 · A 500-watt power inverter can run a variety of small appliances and electronic devices that operate at or below 500 watts of power consumption. The inverter converts direct ...



How long will a 12v battery last with inverter

Apr 30, 2025 · How long will a 12v battery last with an inverter? Here is a completed explication on the factors that affect the run time of 12v battery ...



[How Long Will A 12v Battery Last With An ...](#)

Jan 11, 2025 · As a simple rule, to calculate how long a 12v deep-cycle battery will last with an inverter multiply battery amp-hours (Ah) by 12 to ...

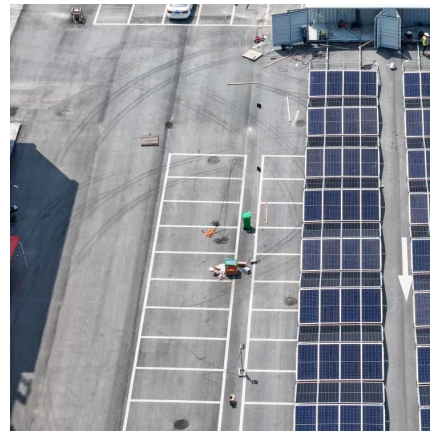


[What can a 500 watt inverter run?](#)

The best 500 watt power inverter is a useful in your car as it is for your home. Keep reading for the expert top picks today.

[What can I run on a 500 watt inverter?](#)

May 19, 2023 · A 500 watt inverter is a popular choice for powering electronic devices and appliances in areas without access to a traditional power ...



[How Much Battery Capacity Do You Need With a 12V Inverter?](#)

Jun 14, 2025 · Discover how to calculate the ideal battery capacity for a 12V inverter using simple math, practical examples, and money-saving tips for daily power.



[How Big of an Inverter Can My Car Battery Handle?](#)

Mar 26, 2025 · When considering connecting an inverter to your car battery, the first question we need to clarify is: how much power can your car battery actually support an inverter? Typically, ...



[What can I run on a 500 watt inverter?](#)

May 19, 2023 · A 500 watt inverter is a popular choice for powering electronic devices and appliances in areas without access to a traditional power grid. But what exactly can be run on ...

[What size inverter can you run off a car battery?](#)

Aug 11, 2025 · A typical 12-volt car battery can safely support an inverter ranging from about 150 watts up to 600 watts for regular use without harming the battery. While it is technically ...



Contact Us

For technical specifications, project proposals, or partnership inquiries, please visit:
<https://eiei.pl>



Scan QR Code for More Information



<https://eiei.pl>