

# Can 36v use 12v inverter





## Overview

---

What is a 36 volt inverter?

Looking for a 36 V inverter is often harder than finding a 12 V or 24V inverter since they are less common. Although not used as often, they still serve important roles in mid-range power applications. All of these higher-voltage systems should be used when powering equipment that draws over 3,000 W. Higher voltage is important for several reasons.

What is a 36V to 12V DC/DC converter?

A 36V to 12V DC/DC converter, also known as an inverter, converts the input DC voltage to a 36V stabilised DC voltage. DWE supplies DC/DC converters with various input voltages over a wide range and different output voltages. All our 36V to 12V inverters meet high quality standards and have high efficiency.

What voltage should a solar inverter match?

Your inverter should match the DC voltage of your battery or solar system—e.g., 36 V input for a 36 V battery bank. Mismatches can cause poor performance or damage. Try to operate your inverter at around 70–80% of its continuous rating to maximize efficiency and lifespan.

How many watts is a 36V panel?

So, for example, let's say you put two 18V 100W panels in series, which will give you ~5.5A at 36V. You could then wire one 36V panel parallel to the string of two 18volters because they are both putting out the same voltage. How many watts is that 36V panel?

Let's say for example that it is a 300W panel putting out 8.33A at 36V.



## Can 36v use 12v inverter

---



### [Power Surge: Can You Run a 36V Motor on 12V?](#)

May 8, 2025 · Yes, you can use a 36V motor in a 12V system with a voltage booster. A voltage booster or step-up converter can increase the voltage of the 12V power source to 36V, ...

### [The Best 36 Volt Power Inverters . SolarKnowHow](#)

The 3000W Pure Sine Wave Inverter (3000W36V) converts 36V DC power to efficient 110V/120V AC electricity. It is a good choice for cars, solar, and off-grid setups.



### [Solar panel 400W / 36v to battery 12V](#)

Aug 16, 2024 · I have received a good offer for a 400V to 36v solar panel (40V ~ 10.1Amps open circuit). My question is, I already have a 12V solar ...

### [Can a 12V Inverter Work with a 36V System Key ...](#)

SunContainer Innovations - Summary: Wondering if your 12V inverter can handle a 36V power setup? This guide breaks down compatibility challenges, practical solutions, and real-world ...



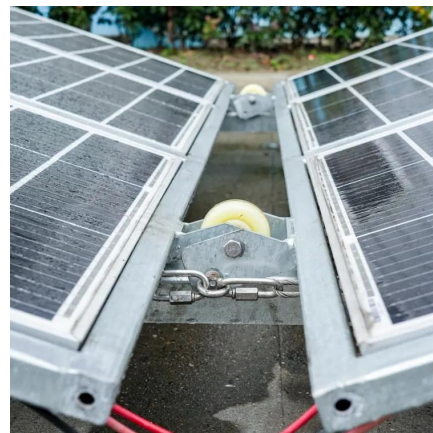
### Using 36 v solar panel with 12 v battery

Nov 16, 2019 · Hi! I successfully mounted my off grid system with 18v panels (connected in parallel) using the Epever Tracer4210AN and connecting to ...



### The Best 36 Volt Power Inverters

The 3000W Pure Sine Wave Inverter (3000W36V) converts 36V DC power to efficient 110V/120V AC electricity. It is a good choice for cars, solar, and ...



### Solar panel 400W / 36v to battery 12V

Aug 16, 2024 · I have received a good offer for a 400W to 36v solar panel (40V ~ 10.1Amps open circuit). My question is, I already have a 12V solar chargers and a 12V battery. I want to pair ...





## Wiring Six 12V Batteries to Build a 36V Power System

May 30, 2025 · A 36V power system created by wiring six 12V batteries in series is a smart and scalable solution for many medium-power applications. Whether you're powering a solar ...



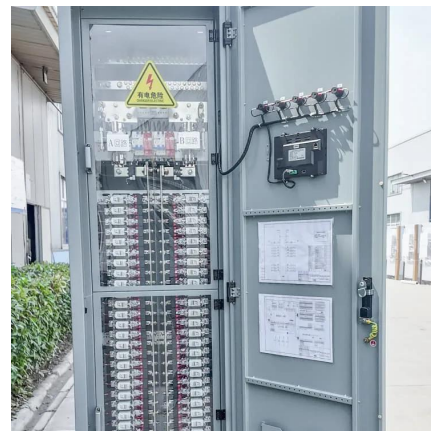
## Using 36 v solar panel with 12 v battery

Nov 16, 2019 · Hi! I successfully mounted my off grid system with 18v panels (connected in parallel) using the Epever Tracer4210AN and connecting to a 12v Li-On battery. When I built ...



## Wiring Six 12V Batteries to Build a 36V Power ...

May 30, 2025 · A 36V power system created by wiring six 12V batteries in series is a smart and scalable solution for many medium-power ...



## **Can a 12V Inverter Be Connected to a 36V System A Practical ...**

Summary: Connecting a 12V inverter to a 36V power system is possible but requires voltage regulation and safety precautions. This guide explores technical solutions, industry ...





## [How to Change 36V to 12V Solar Cell](#)

How to Change 36V to 12V Solar Cell: Disclaimer: Do this in your own responsibility, the panel warranty will void also the delivered power may go below a certain voltages which can cause a ...

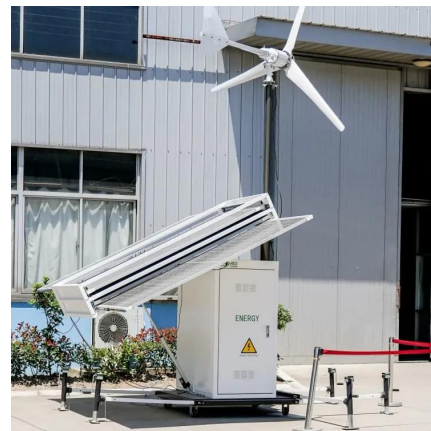


## **Here's what I've learnt after using 12V, 24V, 36V & 48V inverter ...**

Nov 10, 2025 · My Second Inverter Setup: 48V  
This was a 48V 3.5kVA Su-Kam Transformer-based Inverter with four 200Ah Su-Kam batteries connected in series and to a Su-Kam BMS. It ...

## **36 to 12 Volt o DWE**

4 days ago · A 36V to 12V DC/DC converter, also known as an inverter, converts the input DC voltage to a 36V stabilised DC voltage. DWE supplies DC/DC converters with various input ...



## **Contact Us**

---

For technical specifications, project proposals, or partnership inquiries, please visit:  
<https://eiei.pl>



## Scan QR Code for More Information



<https://eiei.pl>