

# Can 1200w inverter 48v battery be used





## Overview

---

Can a lithium ion battery power a 1200W inverter?

Lithium-ion batteries tolerate higher discharge rates (up to 1C) compared to lead-acid (0.5C). A 100Ah LiFePO4 battery can safely power a 1200W inverter, while lead-acid should cap at 600W. Gel and AGM batteries have intermediate tolerances. Mismatching chemistry and inverter size accelerates degradation and voids warranties.

What voltage should a 12V inverter run on?

The input voltage of the inverter should match the battery voltage. (For example 12v battery for 12v inverter, 24v battery for 24v inverter and 48v battery for 48v inverter Summary What Will An Inverter Run & For How Long?

Does a 48v battery work with a 5000W inverter?

A 48V 100Ah lithium battery (4.8kWh) paired with a 5000W inverter works because  $48V \times 100Ah \times 1C = 4800W$ . Always account for inverter efficiency losses (typically 85-95%). For mixed AC/DC loads, sum the wattage of all devices that might run simultaneously and add a 20% buffer.

What battery do I need for a 1500W 12V inverter?

Excellent quality, intelligent design, and clean pure waves to keep your important devices powered up, to keep you safe, productive and entertained whether you are at home, on the road, or any remote location. For the 1500W 12V inverter, we suggest you use a 200Ah battery to power the loads. Small battery may cause low voltage protection.



## Can 1200w inverter 48v battery be used



### Looking for feedback on a 48V 100Ah battery with a 1200W inverter

Nov 14, 2020 · Is a 48V 50Ah battery with a 2000W inverter (or a 1200W inverter) actually a better setup than using a 48V 100Ah battery? Also, besides the LED lights, I'm wondering if this kind ...

### [What Inverter Do I Need for a 48V Battery?](#)

4 days ago · You need a 48V-rated pure sine wave or hybrid inverter that matches your load (in kW), supports LiFePO4 communication (CAN or ...



### [How Many Batteries for 1200 Watt Inverter - ...](#)

Sep 18, 2024 · The 1200 watt inverter is a common low-power inverter that can convert the 12V DC in the battery into 110V AC. A 1200-watt inverter ...

### [Can a 48v battery be used with a 1200w inverter](#)

A 48V battery can be used on a 12V inverter, but it is not recommended. The reason for this is because the voltage of the battery will be too high for the inverter, which could damage the ...



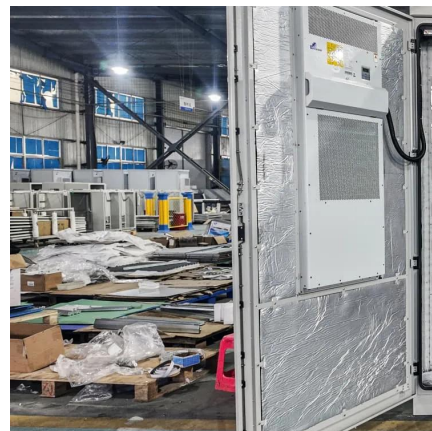
### [What Inverter Do I Need for a 48V Battery?](#)

4 days ago · You need a 48V-rated pure sine wave or hybrid inverter that matches your load (in kW), supports LiFePO4 communication (CAN or RS485), and is compatible with your solar or ...



### [Victron Energy 1200VA 48-Volt 120V AC Pure ...](#)

Dec 18, 2018 · About this item This Victron Energy Inverter allows you to power domestic equipment requiring 120VAC or 230VAC, using leisure or ...



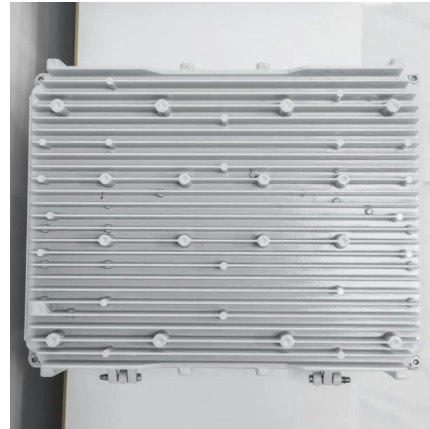
### [Calculate Battery Size For Any Size Inverter \(Using Our ...](#)

Mar 3, 2023 · Pairing a right size capacity battery for an inverter can be a bit confusing for most the beginners So I have made it easy for you, use the calculator below to calculate the battery ...



## Victron Energy 1200VA 48-Volt 120V AC Pure Sine Wave Inverter

Dec 18, 2018 · About this item This Victron Energy Inverter allows you to power domestic equipment requiring 120VAC or 230VAC, using leisure or automotive batteries rated at 48-Volt ...



## 1200W 12V 24V 48V Dc Ac 110V 220V Pure sine wave power inverter

4 days ago · 1200W 12V 24V 48V Dc Ac 110V 220V Pure sine wave power inverter, is an industrial-grade buck converter with an efficiency of up to 97%.

## How Do You Calculate the Appropriate Inverter Size for a 48V Battery

Oct 28, 2024 · To calculate the appropriate inverter size for a 48V battery system, you need to determine the total wattage of the devices you plan to power. The formula is: Inverter Size ...



## [Can I Use a 48V Battery on a 12V Inverter? How Can!](#)

Oct 16, 2022 · A 48V battery can be used on a 12V inverter, but it is not recommended. The reason for this is because the voltage of the battery will be too high for the inverter, which ...



## [Can an Inverter Be Too Big for Your Battery System?](#)

A 48V 100Ah lithium battery (4.8kWh) paired with a 5000W inverter works because  $48V \times 100Ah \times 1C = 4800W$ . Always account for inverter efficiency losses (typically 85-95%).



## [How Many Batteries for 1200 Watt Inverter - MWXNE POWER](#)

Sep 18, 2024 · The 1200 watt inverter is a common low-power inverter that can convert the 12V DC in the battery into 110V AC. A 1200-watt inverter is like a small power station that can meet ...

## [1200W 12V 24V 48V Dc Ac 110V 220V Pure ...](#)

4 days ago · 1200W 12V 24V 48V Dc Ac 110V 220V Pure sine wave power inverter, is an industrial-grade buck converter with an efficiency of up to ...



## Contact Us

---

For technical specifications, project proposals, or partnership inquiries, please visit:  
<https://eiei.pl>



## Scan QR Code for More Information



<https://eiei.pl>