

CMS system in wind power generation





Overview

Does the wind turbine safety chain need a CMS?

However, as part of the wind turbine safety chain, it is an essential part of the WTC. These are usually provided by the OEM, however in some instances where controller access is provided, CMS can be integrated into the WTC to enable remote resets and stops such as ice detection systems.

How a condition monitoring system can improve the efficiency of wind turbines?

It is evident from the study of the advancement on condition monitoring systems used in wind turbines that the researchers had emphasized a few aspects. The enhancement of algorithms, could improve the accuracy and efficiency of the condition monitoring systems.

What is the difference between a CMS and a wind turbine sensor?

These are not high-precision sensors, unlike wind turbine CMS—where the fidelity of measurements affects downstream processing. With a CMS, understanding the sensitivity, bandwidth, and accuracy of the chosen sensor is important, as well as knowing if it can determine component health on all of the fault modes that can affect it.

What is a prognosis for a wind turbine CMS?

A prognosis for a wind turbine CMS is used slightly differently. Instead of changing future operating conditions to prevent component failure, an estimate is used to determine when the component will reach the end of its useful life. Figure 4 show a graphical example of the projection of future component health.



CMS system in wind power generation



[Understanding Wind Turbine Condition Monitoring ...](#)

Apr 24, 2018 · Understanding Wind Turbine Condition Monitoring Systems More and more, the wind industry is recognizing the value of condition monitoring. This shift is driven by two major ...

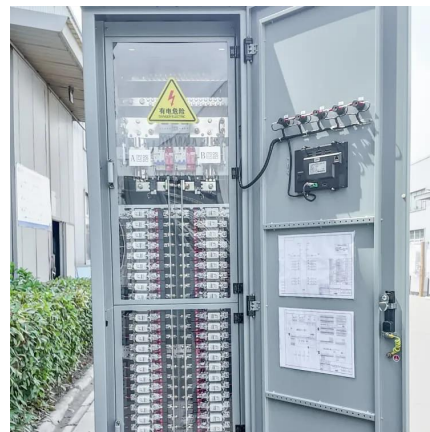


[What Is Condition Monitoring System \(CMS\) in Wind Turbines?](#)

Jun 26, 2025 · Understanding Condition Monitoring Systems (CMS) Condition Monitoring Systems (CMS) play a crucial role in the wind energy sector, providing essential insights into ...

[Condition Monitoring Systems](#)

Dec 5, 2025 · What approach - condition monitoring or hands on? The price of predicting catastrophic turbine breakdowns is open to lively debate. ...



[Research About the Impact of Cms on the Reliability of Wind ...](#)

Dec 16, 2024 · This paper proposes a reliability assessment method for wind turbines based on CMS data. Combined with multi-scenario applications in complex operating environments, the ...



Wind turbine monitoring: CMS and digital twins , Business ...

Jan 15, 2025 · Discover how wind turbine monitoring systems and digital twins improve efficiency. Understand condition monitoring and its role in maintenance strategies.



Condition Monitoring Systems

Dec 5, 2025 · What approach - condition monitoring or hands on? The price of predicting catastrophic turbine breakdowns is open to lively debate. While some insist rigorous regular ...



Wind Turbine Condition Monitoring - The Complete ...

Nov 12, 2024 · Control linked vs non-control linked Condition Monitoring Systems (CMS) linked to the wind turbine controller (WTC) are set to stop the turbine to prevent further damage or ...





Condition Monitoring Systems CMS

From hardware to software, analysis to consulting - every Bachmann Condition Monitoring System (CMS) solution is ...



CMS for Wind Turbines , Energy , RSL

Our CMS system, the WT-HUMS, is suitable for wind turbines of all OEMs, including gearless wind turbines. Main Features the System's diagnostics, based on Learning Machines ...

CMS for Wind Turbines , Energy , RSL

Our CMS system, the WT-HUMS, is suitable for wind turbines of all OEMs, including gearless wind turbines. Main Features the System's diagnostics, ...



CMSWind - Advanced Condition Monitoring System

TWI played a key role in an EU project that has developed an advanced condition monitoring system (CMS) and methods of continuously monitoring rotating parts in wind turbines.



[Wind Turbine Condition Monitoring - The ...](#)

Nov 12, 2024 · Control linked vs non-control linked Condition Monitoring Systems (CMS) linked to the wind turbine controller (WTC) are set to stop ...

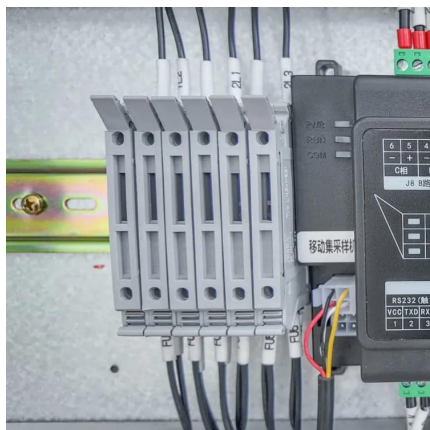


[Condition Monitoring Systems CMS](#)

From hardware to software, analysis to consulting - every Bachmann Condition Monitoring System (CMS) solution is based on over 50 years of experience. With thousands of ...

[Wind turbine monitoring: CMS and digital ...](#)

Jan 15, 2025 · Discover how wind turbine monitoring systems and digital twins improve efficiency. Understand condition monitoring and its role in ...



Recent advancements in condition monitoring systems for wind ...

Oct 1, 2023 · A robust embedded system in a wind energy generation system can provide a reliable, efficient, and economical link between discrete wind turbine sensors for accurate and ...



Contact Us

For technical specifications, project proposals, or partnership inquiries, please visit:
<https://eiei.pl>

Scan QR Code for More Information



<https://eiei.pl>