

# Bern BIPV solar glass components





## Overview

---

What is building integrated photovoltaic (BIPV) glass?

Building Integrated Photovoltaic (BIPV) glass is a type of solar glass designed to seamlessly integrate with architectural elements in buildings while generating electricity. It serves both as a structural component of the building and as a renewable energy source.

What is a BIPV glass system?

Doubling as a building component to enhance sustainability and energy efficiency in commercial buildings, the Solarvolt™ BIPV glass system has been honored for delivering high performance, aesthetics and CO2-free power generation while replacing conventional building materials. Complement classic building materials — or replace them.

What is a BIPV solar system?

BIPV integrates solar panels into various components of a building's structure, including roofs, facades, windows, and walls. These solar panels are designed to be aesthetically appealing and functional, effectively converting sunlight into electricity.

What is a solarvolt BIPV glass system?

**EXPLORE** The Solarvolt BIPV glass system replaces traditional façade cladding materials and enhances commercial building exteriors by providing sunshading, overhead glazing, CO2-free power generation and more.



## Bern BIPV solar glass components

---



### [Building-integrated photovoltaic applied Bi-facial ...](#)

Jun 1, 2024 · Most photovoltaic modules typically exhibit a structure configuration of either glass-to-back sheet or glass-to-glass. These configurations are widely used in standard construction ...

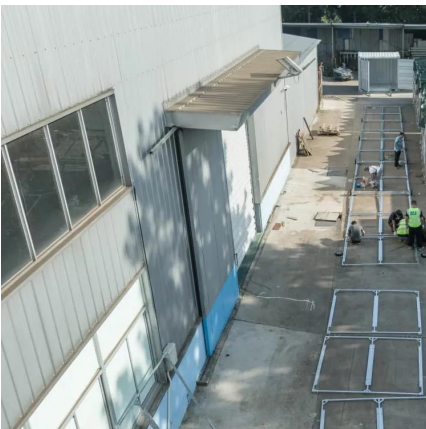
### **BIPV Products**

BIPV (Building Integrated Photovoltaic) is a technology that integrates solar power products into buildings as materials or components of buildings. It is designed, constructed and installed at ...



### [BIPV Glass, Building Integrated Photovoltaic/PV, Evergreen](#)

Building Integrated Photovoltaic Glass (BIPV)  
Building Integrated Photovoltaic (BIPV) glass is a type of solar glass designed to ...



### [Leading BIPV Manufacturer in China](#)

Leading BIPV manufacturer specializing in solar-integrated glass, facade, roof, and tiles. Discover efficient, durable, and aesthetic solar panels.



### Glass / Glass

Glass The front of the module contains a tempered solar glass with high transparency with high transmissivity, low reflectivity ...



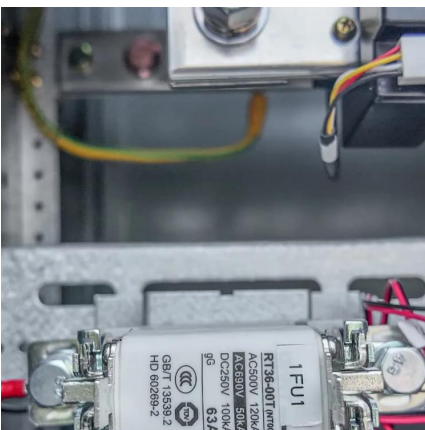
### Solarvolt Photovoltaic Glass System , Vitro Architectural Glass

Doubling as a building component to enhance sustainability and energy efficiency in commercial buildings, the Solarvolt(TM) BIPV glass system has been honored for delivering high ...



### [BIPV , The Glass Company](#)

BIPV integrates solar panels into various components of a building's structure, including roofs, facades, windows, and walls. These solar panels are designed to be aesthetically appealing ...





### SUSTAINABLE SOLUTIONS FOR ENERGY GENERATION ...

2 days ago · BIPV panels are designed solar modules that replace conventional façade coverings and are integrated in the building skin. More than just traditional covering, they deliver not only ...



### **Do Building Integrated Photovoltaic (BIPV) windows propose ...**

Nov 15, 2023 · Amorphous silicon is the most popular solar cell technology in BIPV studies due to its performance however they do have disadvantages. Application of BIPV windows includes ...

### SUSTAINABLE SOLUTIONS FOR ENERGY ...

2 days ago · BIPV panels are designed solar modules that replace conventional façade coverings and are integrated in the building skin. ...



### BIPV , The Glass Company

BIPV integrates solar panels into various components of a building's structure, including roofs, facades, windows, and walls. These solar ...



## [BIPV Glass, Building Integrated Photovoltaic/PV, Evergreen](#)

Building Integrated Photovoltaic Glass (BIPV)  
Building Integrated Photovoltaic (BIPV) glass is a type of solar glass designed to seamlessly integrate with architectural elements in buildings ...



### **Glass / Glass**

Glass The front of the module contains a tempered solar glass with high transparency with high transmissivity, low reflectivity and low iron content. The glass forms the front end of ...

## [Building-Integrated Photovoltaics: A Technical Guidebook](#)

May 15, 2025 · Today several technologies have become trendy: the BIPV cladding became "invisible" thanks to the use of coloured coatings and treated outer glass surfaces, allowing the ...



## **Contact Us**

---

For technical specifications, project proposals, or partnership inquiries, please visit:  
<https://eiei.pl>



## Scan QR Code for More Information



<https://eiei.pl>