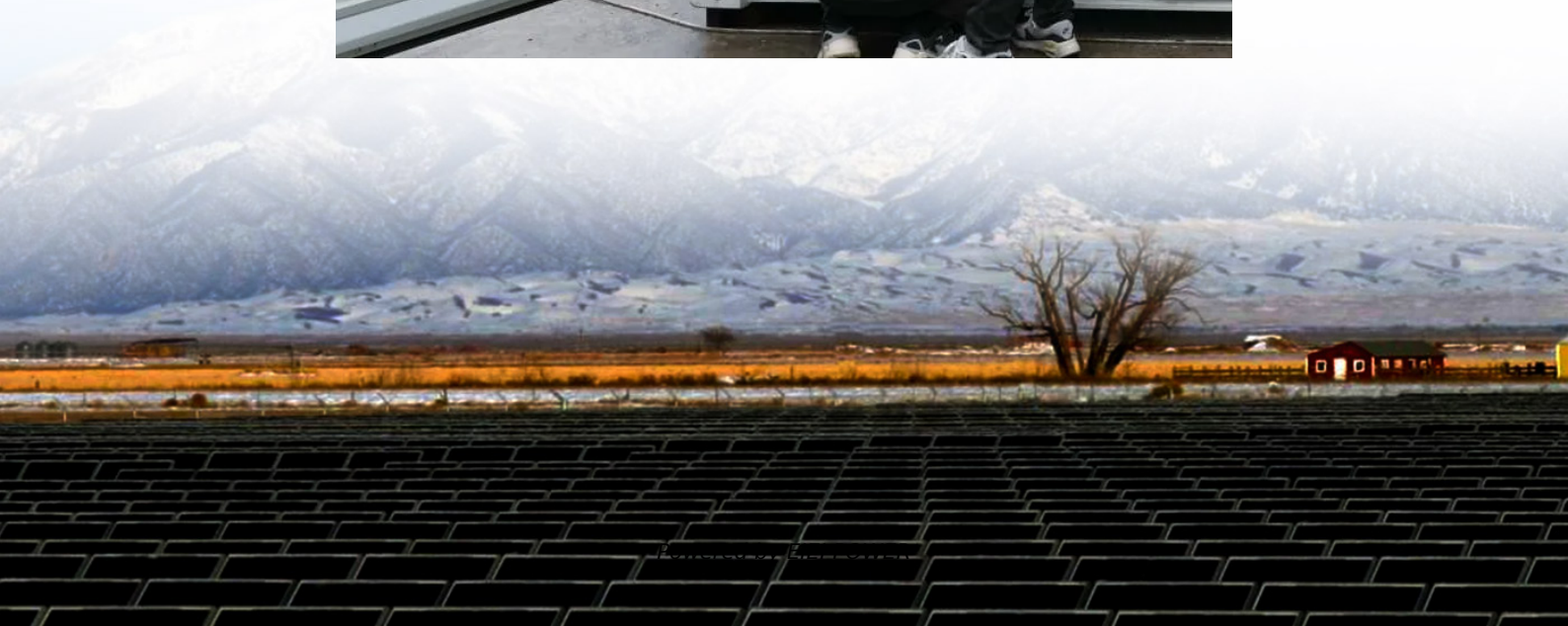


Battery cabinet wiring specifications





Overview

What is included in the Battery Cabinet Manual?

This manual contains important instructions that should be followed during installation and operation of the battery cabinet. This product is designed for commercial / industrial use only, with UPS systems. It is not intended for use with life support and other designated critical devices.

How many volts should a battery cabinet have?

600V. The wiring should be a minimum of 18 AWG rated at 48V, 1 A minimum. All interface wiring between the UPS and battery cabinet is to be provided by the customer. When installing external interface wiring (for example, battery breaker shunt trip) to the battery cabinet interface terminals.

How do I connect a battery cabinet to a power system?

Procedure 1. Furnished with the battery cabinet are battery disconnect circuit breaker alarm lead assemblies. Refer to the power system installation manual to use these alarm leads to connect the battery cabinet battery disconnect circuit breaker alarm into the power system alarm circuits.

What is a battery cabinet?

y current. The battery cabinet is installed in a standalone configuration. The term standalone refers to battery cabinets that may be installed adjacent to the UPS or in a separate location, are wired with external customer-supplied conduit and wiring, and may use the battery cabinet breaker as the battery isolation device or a sin

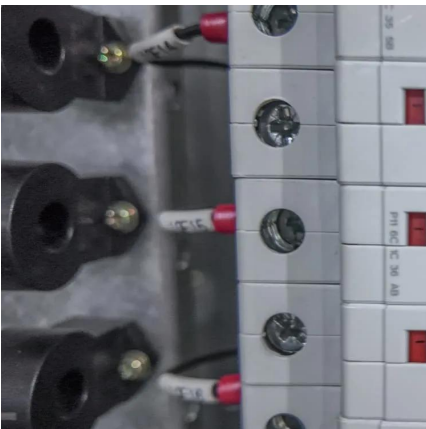


Battery cabinet wiring specifications



[NetSure\(TM\) 211 Series -48 VDC Battery Cabin](#)

Jan 31, 2023 · Connect the second battery cabinet's battery cable terminated in an Anderson connector to the fixed mating Anderson connector located on the first battery cabinet.



[Eaton Samsung Gen 3 Battery Cabinet Installation and ...](#)

Mar 25, 2025 · Because of the battery shunt trip wiring route in the UPS cabinet, the wiring from the Eaton Samsung Gen 3 to the UPS must use wire rated for 600V and Class 1 wiring methods.

Battery cabinet

Mar 16, 2024 · Foreword This user manual contains guidelines to install the battery cabinet and it is intended for people who plan the installation, install, commission and use or service the ...



[Standard Specification EPIC Series Battery Cabinet](#)

Jan 23, 2025 · EPIC Series Battery Cabinet A battery cabinet shall be furnished in accordance with the following specification.



[-48 VDC Battery Cabinet Installation and User Manual ...](#)

Apr 21, 2022 · Installation and User Manual (Section 6023), Revision L Specification Number: 541434 Model Number: 211BC



[UBC80 Battery Cabinet Installation, Operation.](#)

Feb 3, 2025 · Review the battery system schematic that is located attached to the inside of a cabinet door to determine the number of batteries that need to be installed in the cabinet, the ...



[Simple installation manual of DC cabinet](#)

Jun 4, 2024 · Simple installation manual of DC cabinet 1. Basic components The DC cabinet mainly collects and distributes current to each battery cluster to realize charge and discharge ...



[Samsung Gen 2 lithium battery cabinet site plan](#)

Mar 21, 2025 · EACH TYPE S BATTERY SYSTEM REQUIRES A MINIMUM OF ONE 400-500 VAC THREE-PHASE CIRCUIT TO PROVIDE AUXILIARY POWER TO THE SYSTEM BMS. ...



[Powerware 9395 Integrated Battery Cabinet \(Model IBC ...](#)

Jun 17, 2016 · The term standalone refers to battery cabinets that may be installed adjacent to the UPS or in a separate location, are wired with external customer-supplied conduit and wiring, ...

[BC-1\(R\) Battery Cabinet Installation Sheet](#)

Feb 23, 2023 · The BC-1(R) Battery Cabinet is used for a system requiring a battery rated above 17 Ah. The BC-1(R) consists of a surface mount wall box and door. The cabinet can house up ...



Contact Us

For technical specifications, project proposals, or partnership inquiries, please visit: <https://eiei.pl>



Scan QR Code for More Information



<https://eiei.pl>