

Battery cabinet charging time and current relationship





Overview

How long does it take to charge a battery?

Typical charging current: 0.1C to 0.3C Charging time: 6-12 hours Efficiency: ~80%
Typical charging current: 0.5C to 1C Charging time: 1-3 hours Efficiency: ~95%
Typical charging current: 0.5C Charging time: 2-4 hours Efficiency: ~90%
Tips to Optimize Charging Current and Time.

How to calculate battery charging time?

Below are the formulas for calculating the required battery charging time (in hours) and the necessary charging current (in amperes):
Charging Time of Battery = Battery Ah ÷ Charging Current $t = Ah \div A$ and Required Charging Current for battery = Battery Ah × 10% $A = Ah \times 10\%$ Where: t = Time in hrs.

What is charging current & charging time?

Charging current is the rate at which electrical energy is delivered to a battery. It's typically measured in amperes (A). This value depends on the battery's capacity and the charger's output. What Is Charging Time?

Charging time refers to the duration it takes to fully replenish a battery from a given state of charge (SOC) to 100%.

How important is charging current & time?

Charging Current and Time remains one of the most critical yet often overlooked aspects of battery technology. By applying proper formulas, understanding influencing factors, and avoiding common pitfalls, you can ensure safer and faster charging every time. As we know that charging current should be 10% of the Ah rating of battery. Therefore.



Battery cabinet charging time and current relationship



Battery Charge Time Calculator - Battery Capacity and Charge Rate Current

Calculate the maximum time taken for a battery to charge up through the Battery Charge Time Calculation tool by entering the respective values.

[Battery Charge Time Calculator - Battery](#)

...

Calculate the maximum time taken for a battery to charge up through the Battery Charge Time Calculation tool by entering the respective values.



[How to Calculate Battery Charging Time and Current?](#)

2 days ago · Simple Battery Charging Time and Current Formula for Batteries (with 120Ah Battery Example) In this simple tutorial, we will explain how to determine the appropriate battery ...

[How To Calculate Battery Charging Current ...](#)

Apr 30, 2021 · Individuals who use batteries on large scale do care about battery charging current and time because batteries are delicate and ...



Battery Charging Time & Battery Charging Current

Battery Charging Time & Battery Charging Current A battery is an electrical storage device. Batteries do not make electricity, they store it, just as a water tank stores water for future use.

...



Battery Charging Time & Battery Charging ...

Battery Charging Time & Battery Charging Current A battery is an electrical storage device. Batteries do not make electricity, they store it, just as a ...



How To Calculate Battery Charging Current and Time?

Apr 30, 2021 · Individuals who use batteries on large scale do care about battery charging current and time because batteries are delicate and need care. In this article, we'll check out the way ...

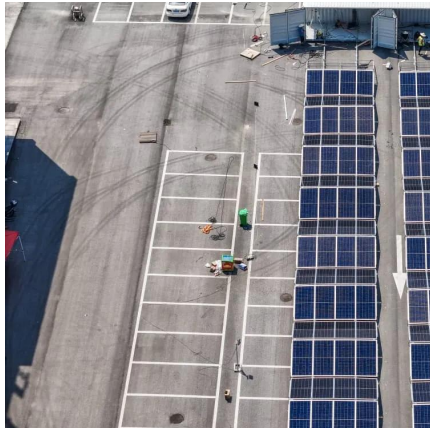




[Battery Charging Calculator - IEC & IEEE](#)

...

Apr 19, 2025 · Battery charging calculator (IEC & IEEE friendly). Calculate charge current, C-rate, charging time, Wh and energy for lead-acid, Li-ion ...

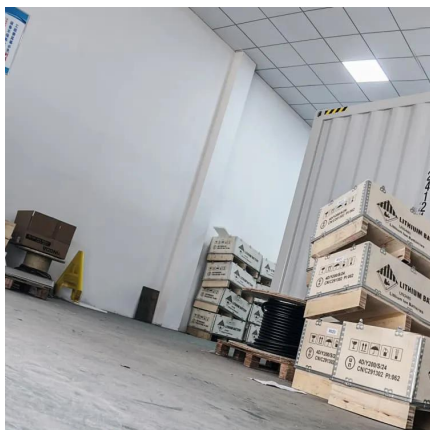


[Battery Charge Time Calculator](#)

Our battery charge time calculator estimates battery charging time using capacity, current, and battery type.

[Battery Charging Calculator - IEC & IEEE Standards](#)

Apr 19, 2025 · Battery charging calculator (IEC & IEEE friendly). Calculate charge current, C-rate, charging time, Wh and energy for lead-acid, Li-ion and NiMH batteries. Copy/paste ready for ...



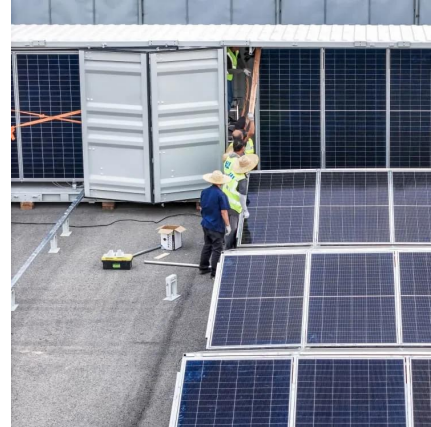
[How to Calculate Battery Charging Time](#)

Jan 17, 2025 · Welcome to this comprehensive guide on understanding battery charging time and charging current! Whether you're a tech ...



[Guide to Calculating Battery Charging Current ...](#)

Jun 25, 2025 · Charging Current and Time remains one of the most critical yet often overlooked aspects of battery technology. By applying proper ...

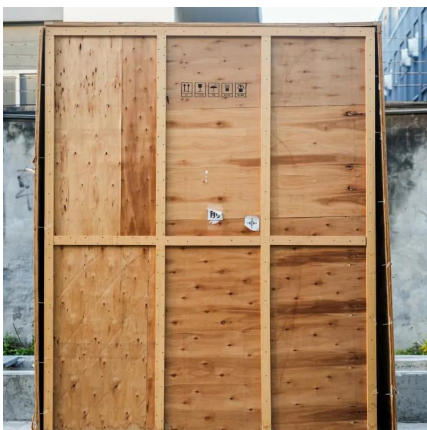
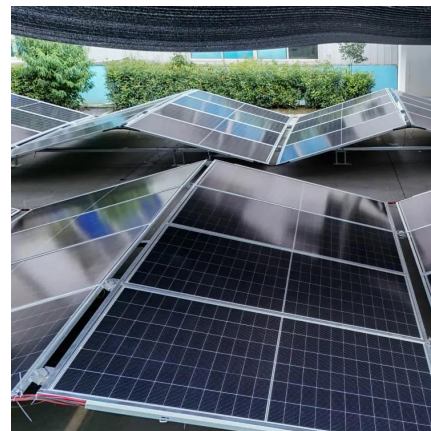


[How to Calculate Battery Charging Time and ...](#)

2 days ago · Simple Battery Charging Time and Current Formula for Batteries (with 120Ah Battery Example) In this simple tutorial, we will explain how to ...

[Battery cabinet charging current and voltage changes](#)

Nov 21, 2025 · Charging Termination: The charging process is considered complete when the charging current drops to a specific predetermined value, often around 5% of the initial ...



[How to Calculate Battery Charging Current and Time](#)

Jun 20, 2024 · Calculating battery charging current and time is essential for optimizing battery life and performance. Typically, the charging current is set to about 10% of the battery's amp-hour ...



[How to Calculate Battery Charging Current ...](#)

Jun 20, 2024 · Calculating battery charging current and time is essential for optimizing battery life and performance. Typically, the charging current is ...



[Guide to Calculating Battery Charging Current and Time](#)

Jun 25, 2025 · Charging Current and Time remains one of the most critical yet often overlooked aspects of battery technology. By applying proper formulas, understanding influencing factors, ...

[How to Calculate Battery Charging Time & Charging Current](#)

Jan 17, 2025 · Welcome to this comprehensive guide on understanding battery charging time and charging current! Whether you're a tech enthusiast, an engineer, or simply someone curious ...



Contact Us

For technical specifications, project proposals, or partnership inquiries, please visit:
<https://eiei.pl>



Scan QR Code for More Information



<https://eiei.pl>