

Based on SG3524 single-phase bridge inverter





Overview

What is PWM inverter IC sg3524?

PWM (Pulse Width Modulation) signal-based inverters produce output as a pure sine wave and it can be used for any electric appliance that meets the inverter output range. Here we design a simple and powerful PWM inverter circuit by using IC SG3524 (Regulating Pulse Width Modulator) that gives up to 230V AC from a 12V DC supply. 1. 2. 3. 4. 5. 6. 7.

What is a sg3524 full bridge inverter?

The full bridge inverter circuit using SG3524 is an ideal solution for applications requiring reliable, high-efficiency AC power conversion. Its simple design, low-cost components, and excellent performance make it an ideal choice for a variety of projects.

What is IC 3 sg3524?

shows the complete circuit diagram of the PWM inverter circuit. IC 3 (SG3524) is the pulse-width modulator IC and its function is to generate the 50Hz alternating pulses from pin 14 and 11, needed to drive the MOSFET banks (M 1 and M 2). The aim of this work is to design and construct a 12V-DC/220V-AC 1.5kVA inverter.

How many stages are there in a sg3524 inverter?

The inverter consists of four stages which include the transformation stage (implemented with a 1,500VA transformer), oscillator stage (implemented with SG3524 Pulse-Width Modulator (PWM) IC), driver stage (implemented with MOSFET IRF150) which controls the switching. was then implemented on a printed circuit board.



Based on SG3524 single-phase bridge inverter

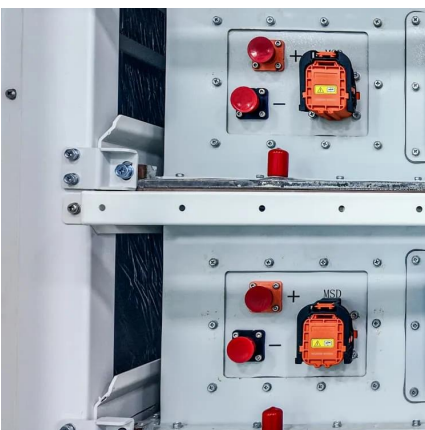


Design of High Efficiency Single-Phase Bridge Passive Inverter Based ...

Nov 1, 2019 · In this work, a method for simultaneously improving the conversion efficiency and power quality of marine distributed generation was proposed. Aiming at the insufficient ...

[Full Bridge Inverter Circuit Using Sg3524](#)

Dec 1, 2019 · The full bridge inverter circuit using SG3524 is an ideal solution for applications requiring reliable, high-efficiency AC power conversion. Its ...



[shows the complete circuit diagram of the ...](#)

The inverter consists of four stages which include the transformation stage (implemented with a 1,500VA transformer), oscillator stage (implemented ...

[Sg3524 Inverter Circuit Diagram Pdf](#)

Aug 31, 2018 · Sg3524 Inverter Circuit Diagram Pdf is a great resource for anyone looking to build their own power supply and inverter circuits. This circuit diagram is a comprehensive guide ...



[shows the complete circuit diagram of the PWM inverter ...](#)

The inverter consists of four stages which include the transformation stage (implemented with a 1,500VA transformer), oscillator stage (implemented with SG3524 Pulse-Width Modulator ...



[Sg3524 Inverter Circuit Diagram Pdf](#)

Aug 31, 2018 · Sg3524 Inverter Circuit Diagram Pdf is a great resource for anyone looking to build their own power supply and inverter circuits. This ...



[Regulating pulse width modulators](#)

The SG3524 family was designed for switching regulators of either polarity, transformer-coupled dc- to-dc converters, transformerless voltage doublers and polarity converter applications ...

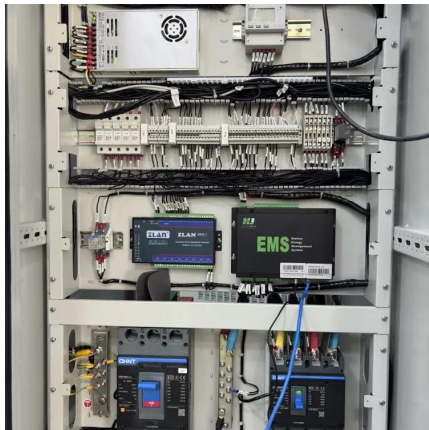




[PWM Inverter Circuit SG3524](#)

Dec 22, 2022 · PWM (Pulse Width Modulation) signal-based inverters produce output as a pure sine wave and it can be used for any electric appliance that meets the inverter output range.

...

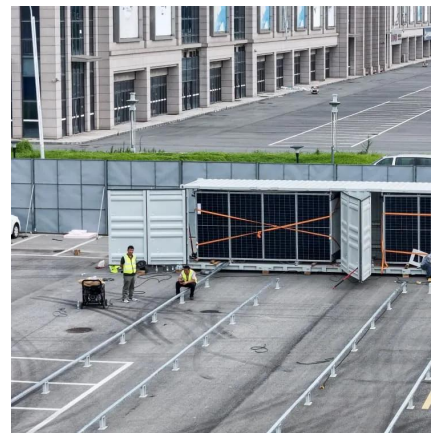


[Full Bridge Inverter Circuit Using Sg3524](#)

Dec 1, 2019 · The full bridge inverter circuit using SG3524 is an ideal solution for applications requiring reliable, high-efficiency AC power conversion. Its simple design, low-cost ...

[INVERTER FULL BRIDGE SATU FASA BERBASIS IC SG3524](#)

Setelah blok diagram perancangan sudah sesuai, tahap selanjutnya adalah pembuatan perangkat keras. Dalam perancangan rangkaian inverter full bridge ini, rangkaiannya terbagi menjadi 5 ...



SG3524 , Product

The SG3524 incorporates on a single monolithic chip all the function required for the construction of regulating power supplies inverters or switching regulators.



[INVERTER FULL BRIDGE SATU FASA BERBASIS IC SG3524](#)

Nov 9, 2017 · IC SG3524 digunakan sebagai pembangkit sinyal PWM (Pulse Width Modulation). Inverter full bridge dalam penelitian ini dirancang untuk dapat divariasikan besar frekuensi dan ...



Contact Us

For technical specifications, project proposals, or partnership inquiries, please visit:
<https://eiei.pl>

Scan QR Code for More Information



<https://eiei.pl>