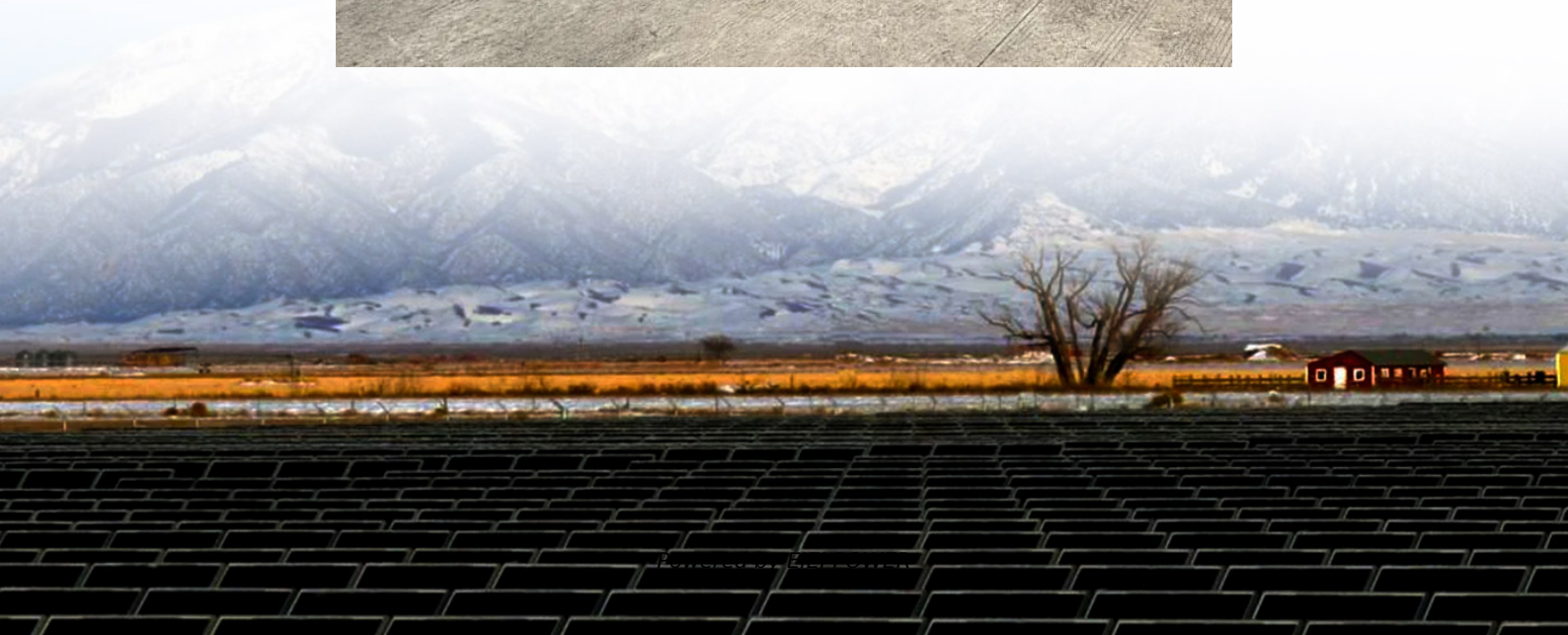


# **Base station room power supply equipment explanation**





## Overview

---

The base station power cabinet is a key equipment ensuring continuous power supply to base station devices, with LLVD (Load Low Voltage Disconnect) and BLVD (Battery Low Voltage Disconnect) being two important protection mechanisms in the power cabinet. What is a base station power supply?

This acts as the “blood supply” of the base station, ensuring uninterrupted power. It includes: AC distribution box: Distributes mains power and offers surge protection. Switch-mode power supply: Converts and stabilizes power while managing DC output. Battery banks: Serve as backup power to keep systems running during outages. 3.

What is a base station?

The base station is a transceiver and acts as an interface between a mobile station and network using microwave radio communication. It consists of three part elements: one or more transceivers, several antenna mounted on a tower or building, power system, and air conditioning equipment.

What is a base station & a PV powering Unit?

The base station uses radio signals to connect devices to network as a part of traditional cellular telephone network and solar powering unit is used to power it. The PV powering unit uses solar panels to generate electricity for base stations in areas with no access to grid or areas connected to unreliable grids.

What is a base station connection diagram?

The connection diagram provides a clear overview of how the main base station equipment operates within the network. Surrounding this central "brain" are the “Four Guardians” that ensure seamless functionality: Power Supply: Provides a steady and uninterrupted energy source to keep the equipment operational.



## Base station room power supply equipment explanation

---

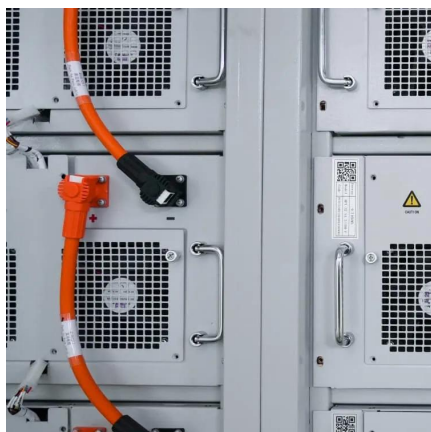


### [6.2 Base station output power - TechSpec](#)

6.2.1 General The configured carrier power is the target maximum power for a specific carrier for the operating mode set in the BS within the limits given by the manufacturer's declaration. ...

### [AC and DC Integrated Power System](#)

Our company has developed an integrated design of distributed base station power supply system for a variety of installation environments such as corridor, shaft, and outdoor environment.



### [Communications System Power Supply Designs](#)

Apr 1, 2023 · Communications infrastructure equipment employs a variety of power system components. Power factor corrected (PFC) AC/DC power supplies with load sharing and ...

### [Management and maintenance of base ...](#)

Dec 11, 2024 · This article focuses on the three parts of switching power supply: "types and usage scenarios, configuration principles and ...



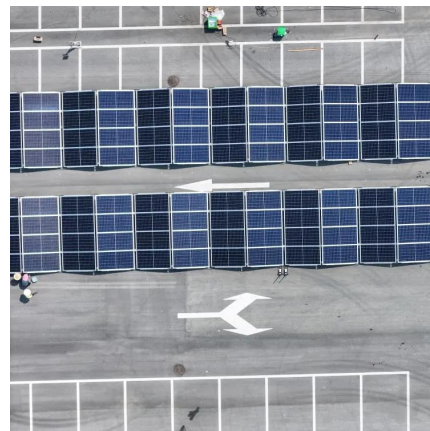
### Power Base Station

The transmitter characteristics define RF requirements for the wanted signal transmitted from the UE and base station, but also for the unavoidable unwanted emissions outside the transmitted ...



### [What Is A Base Station?](#)

Apr 22, 2024 · A base station is an integral component of wireless communication networks, serving as a central point that manages the ...



### [5G macro base station power supply design strategy and ...](#)

Oct 24, 2024 · For macro base stations, Cheng Wentao of Infineon gave some suggestions on the optimization of primary and secondary power supplies. "In terms of primary power supply, we ...





### [base station power systems](#)

base station power systems Uninterruptible Power Supplies (UPS) play a crucial role in ensuring the continuity and quality of power for mission-critical applications. One of the most important, ...



### [Selecting the Right Supplies for Powering 5G Base Stations](#)

These tools simplify the task of selecting the right power management solutions for these devices and, thereby, provide an optimal power solution for 5G base stations components.

### [Complete Guide to 5G Base Station ...](#)

Nov 17, 2024 · Output: Supplies clean and stable DC power to crucial equipment. Battery Bank Backup Power: In the event of a power failure, ...



### [Green Base Station Solutions and Technology](#)

Mar 20, 2011 · Green Base Station Solutions and Technology Environmental protection is a global concern, and for telecom operators and equipment ...



### [Telecommunication base station system working principle ...](#)

Jan 13, 2024 · Operational principle The ESB-series outdoor base station system utilizes solar energy and diesel engines to achieve uninterrupted off grid power supply. Solar power ...



### [Basic components of a 5G base station](#)

The 5G base station is composed of a power supply system and communication equipment [4], in addition to some auxiliary equipment such as air conditioning and lighting.

### [Improved Model of Base Station Power ...](#)

Nov 29, 2023 · The optimization of PV and ESS setup according to local conditions has a direct impact on the economic and ecological benefits of ...



### **Management and maintenance of base station switching power supply**

Dec 11, 2024 · This article focuses on the three parts of switching power supply: "types and usage scenarios, configuration principles and algorithms, and daily management and maintenance".



### 6.2 Maximum output power - TechSpec

In extreme conditions, the base station maximum output power shall remain within +2,5 dB and -2,5 dB of the manufacturer's rated output power. In certain regions, the minimum requirement ...



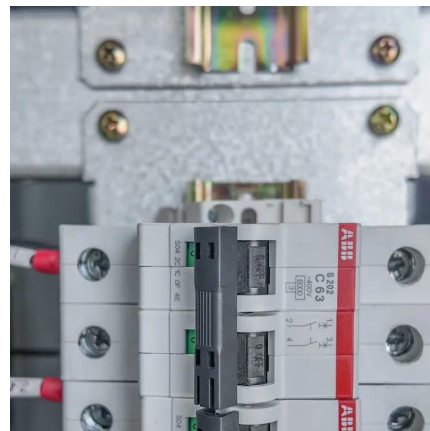
### Building better power supplies for 5G base stations

May 25, 2025 · Building better power supplies for 5G base stations Authored by: Alessandro Pevere, and Francesco Di Domenico, both at Infineon Technologies



### **Complete Guide to 5G Base Station Construction , Key Steps, Equipment**

Nov 17, 2024 · Output: Supplies clean and stable DC power to crucial equipment. Battery Bank Backup Power: In the event of a power failure, battery banks act as silent guardians, providing ...



### LLVD & BLVD in Base Station Power Cabinets

The base station power cabinet is a key equipment ensuring continuous power supply to base station devices, with LLVD (Load Low Voltage Disconnect) and BLVD (Battery Low Voltage) ...





## Base Stations

Jul 23, 2025 · It provides for the interchange of data between the base station and other network components, hence communication with ...

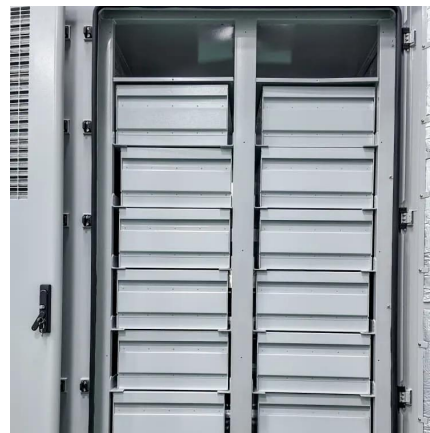


### Basic components of a 5G base station

The 5G base station is composed of a power supply system and communication equipment [4], in addition to some auxiliary equipment ...

### Measurements and Modelling of Base Station ...

Mar 28, 2012 · The real data in terms of the power consumption and traffic load have been obtained from continuous measurements performed on a ...



### 6.2 Base station output power - TechSpec

6.2.1 Base station maximum output power  
6.2.1.1 Definition and applicability In certain regions, the minimum requirement for normal conditions may apply also for some conditions outside ...



### [Uninterruptible Power Supply \(UPS\): Block ...](#)

Feb 24, 2012 · Off-line UPS Explanation: This UPS type switches to battery power when a power failure is detected, providing basic features and ...



## Contact Us

---

For technical specifications, project proposals, or partnership inquiries, please visit:  
<https://eiei.pl>

### Scan QR Code for More Information



<https://eiei.pl>