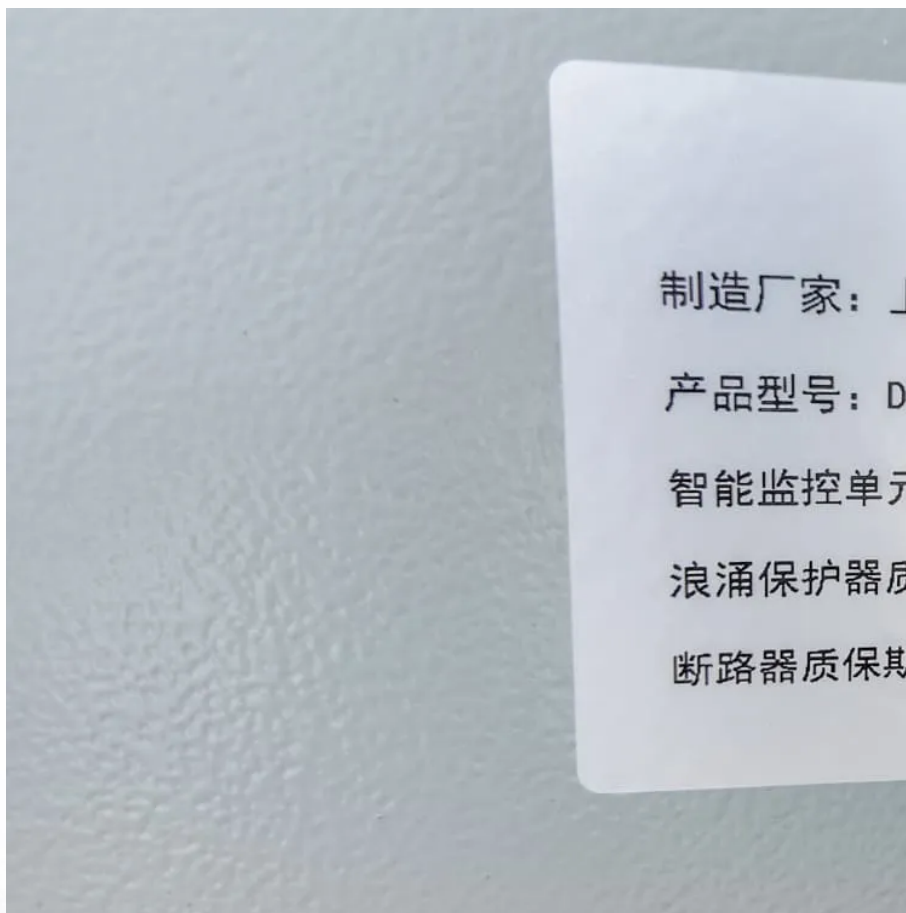


Base station power supply connected to power amplifier





Overview

Why is a base station power amplifier important?

The proliferating frequency bands and modulation schemes of modern cellular networks make it increasingly important that base-station power amplifiers offer the right combination of output power, efficiency and multi-band support – at both peak and average power levels. PAs are the main energy consumers in modern base stations.

How does a power amplifier affect a wireless base station?

In wireless base stations, the power amplifier (PA) dominates signal-chain performance in terms of power dissipation, linearity, efficiency, and cost. Monitoring and controlling the performance of a base station's PA makes it possible to maximize the output power while achieving optimum linearity and efficiency.

How can a base station reduce energy consumption?

Significant efforts are being made to reduce the overall energy consumption of base stations to lessen their impact on the environment. Electrical energy is the principal source of everyday operating costs in a base station, and the PA can be responsible for more than half of the power dissipation.

What is a 3G base station converter?

In a 3G Base Station application, two converters are used to provide the +27V distribution bus voltage during normal conditions and power outages.



Base station power supply connected to power amplifier

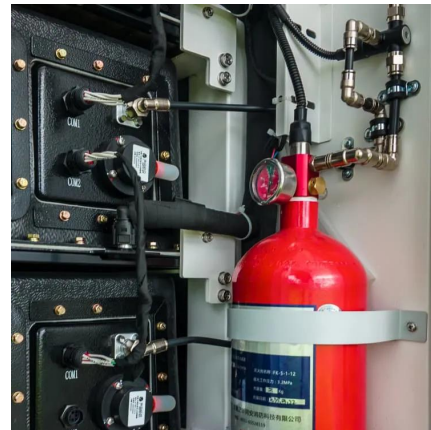


[Selecting the Right Supplies for Powering 5G Base Stations](#)

These tools simplify the task of selecting the right power management solutions for these devices and, thereby, provide an optimal power solution for 5G base stations components.

[The power supply design considerations for ...](#)

Jul 1, 2021 · For 5G, infrastructure OEMs are considering combining the radio, power amplifier and associated signal processing circuits with the ...



[Communication Base Station Power Amplifier PCB Solution](#)

Aug 10, 2025 · An ideal base station power amplifier must exhibit high linearity to prevent signal distortion, high power efficiency to minimize energy consumption and heat, broad bandwidth to ...

[Communications System Power Supply Designs](#)

Apr 1, 2023 · The power factor corrected (PFC) AC/DC produces the supply voltage for the 3G Base station's RF Power amplifier (typ. +27V) and the bus voltage for point-of-load converters.



Supply

Jul 11, 2024 · Abstract--This paper presents a broadband efficient power amplifier (PA) targeting sub-6-GHz 5G base station applications. Due to the demanding requirements in both peak-to ...



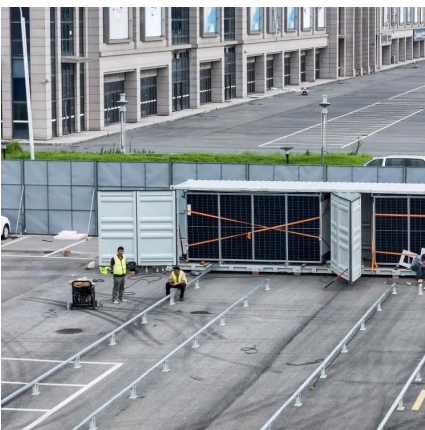
[Building better power supplies for 5G base stations](#)

May 25, 2025 · Building better power supplies for 5G base stations Authored by: Alessandro Pevere, and Francesco Di Domenico, both at Infineon Technologies



Discrete

Introduction In wireless base stations, the power amplifier (PA) dominates signal-chain performance in terms of power dissipation, linearity, efficiency, and cost. Monitoring and ...





[Wideband and High Efficiency Feed-Forward Linear ...](#)

Jun 15, 2010 · In both cases, from the view-point of offering easy-installation, base station equipment is required to be smaller, lighter, and attain lower power consumption, which leads ...



Discrete

Introduction In wireless base stations, the power amplifier (PA) dominates signal-chain performance in terms of power dissipation, linearity, ...

[Improving RF Power Amplifier Efficiency in 5G Radio ...](#)

Dec 22, 2023 · A base station comprises multiple transceivers (TRX); each TRX comprises a radio-frequency (RF) power amplifier (PA), an RF small-signal section, a baseband (BB) ...



[The power supply design considerations for 5G base stations](#)

Jul 1, 2021 · For 5G, infrastructure OEMs are considering combining the radio, power amplifier and associated signal processing circuits with the passive antenna array in active antenna ...



A 100 MHz 3 dB Bandwidth, 30 V Rail-to-Rail Class-AB Buffer Amplifier

Jul 30, 2025 · This paper presents the first hybrid supply modulator (HSM) designed for envelope tracking power amplifiers (ET-PAs) in base station applications. The focus is on a rail-to-rail ...



Contact Us

For technical specifications, project proposals, or partnership inquiries, please visit:
<https://eiei.pl>

Scan QR Code for More Information



<https://eiei.pl>