

# Base station power storage battery temperature





## Overview

---

What is a cellular base station battery?

Batteries used in cellular base stations are typically located in cabinets that are vented to protect the vital equipment from the fumes and corrosive chemicals found in the wet cell batteries, which are often lead-acid or valve regulated lead-acid (VRLA).

Are battery energy-storage technologies necessary for grid-scale energy storage?

The rise in renewable energy utilization is increasing demand for battery energy-storage technologies (BESTs). BESTs based on lithium-ion batteries are being developed and deployed. However, this technology alone does not meet all the requirements for grid-scale energy storage.

What are battery energy storage systems?

Battery energy-storage systems typically include batteries, battery-management systems, power-conversion systems and energy-management systems 21 (Fig. 2b).

How does a battery energy storage system work?

The direct current generated by the batteries is processed in a power-conversion system or bidirectional inverter to output alternating current and deliver to the grid. At the same time, the battery energy storage systems can store power from the grid when necessary 24, 25.



## Base station power storage battery temperature



### [What is the temperature requirement for the ...](#)

Apr 21, 2024 · Neglecting temperature management in energy storage systems can lead to severe consequences, including reduced efficiency, ...

### [Energy Storage System Cooling](#)

Dec 4, 2025 · Batteries used in cellular base stations are typically located in cabinets that are vented to protect the vital equipment from the fumes and corrosive chemicals found in the wet ...



### [Base Station Energy Storage](#)

Highjoule base station energy storage systems typically use LiFePO4 (LFP) batteries for their safety, stability, long lifecycle, and high-temperature tolerance, making them ideal for outdoor ...

### [Storing Power Station In The Winter](#)

Dec 30, 2024 · However, charging is a different story. The charging temperature range for most LiFePO4 batteries is 0°C to 50°C (32°F to ...



### [A Review on Thermal Management of Li-ion Battery: from ...](#)

Dec 7, 2024 · Li-ion battery is an essential component and energy storage unit for the evolution of electric vehicles and energy storage technology in the future. Therefore, in order to cope with ...



### [How to maintain base station energy storage batteries](#)

Battery energy storage systems can be affected by various factors during everyday use, such as ambient temperature, load changes, and battery aging. Regular maintenance helps detect ...



### [Thermal management of standby battery for outdoor ...](#)

Sep 29, 2025 · The combination of semiconductor thermoelectric device and phase change materials can keep the outdoor standby battery pack for base station at optimum temperature ...





### [A Review on Thermal Management of Li-ion ...](#)

Dec 7, 2024 · Li-ion battery is an essential component and energy storage unit for the evolution of electric vehicles and energy storage technology in ...

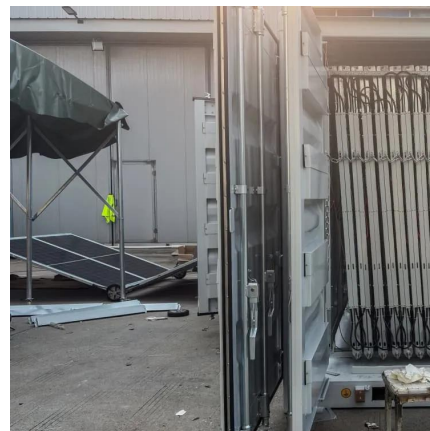


### **What is the temperature requirement for the energy storage station**

Apr 21, 2024 · Neglecting temperature management in energy storage systems can lead to severe consequences, including reduced efficiency, decreased operating lifespan, and ...

### [Base Station Energy Storage Thermal Management](#)

A 2023 MIT study demonstrated that every 10°C temperature increase above 35°C accelerates battery degradation by 200% - a startling figure when considering base stations in Middle ...



### [Battery technologies for grid-scale energy storage](#)

Jun 20, 2025 · In this Review, we describe BESTs being developed for grid-scale energy storage, including high-energy, aqueous, redox flow, high-temperature and gas batteries.



## Storing Power Station In The Winter

Dec 30, 2024 · However, charging is a different story. The charging temperature range for most LiFePO4 batteries is 0°C to 50°C (32°F to 122°F). Charging outside this range can damage ...



## **Thermal management of standby battery for outdoor base station ...**

Jun 5, 2018 · Because of its low price, high safety, life span, and energy density, the lithium iron phosphate battery is widely used in modern battery storage. In the outdoor stationary base ...

## **Contact Us**

---

For technical specifications, project proposals, or partnership inquiries, please visit:  
<https://eiei.pl>

**Scan QR Code for More Information**



<https://eiei.pl>