

# Base station power module changed to 24v





## Overview

---

What is a ps-24v power supply module?

The SpaceLogic PS-24V power supply module is designed to accommodate the specific power requirements for the AS-P server and its connected I/O modules. The module accommodates 24 VAC or 24 VDC input power. The power supply module delivers output power of 24 VDC.

What are the dimensions of a 24 volt power supply module?

The module accommodates 24 VAC or 24 VDC input power. The power supply module delivers output power of 24 VDC. Its dimensions are 114 mm (4.5 in.) in height, 90 mm (3.6 in.) in width and 64 mm (2.5 in.) in depth. Plastic flame rating is UL94-5VB and the ingress protection rating is IP20.

What are the specifications of power modules?

Let's examine the key specifications of power modules: Power modules operate at specific voltage levels (e.g., 12V, 24V, or 48V). The voltage rating determines their compatibility with different applications. The maximum current a module can handle.

What is a power module?

Power module plays a critical role in contemporary electronic systems, offering stable and efficient power conversion across a broad spectrum of applications. In this article, we will explore the design principles, specifications, and applications of the power module, and conclude with our top power module recommendation from FSP.



## Base station power module changed to 24v

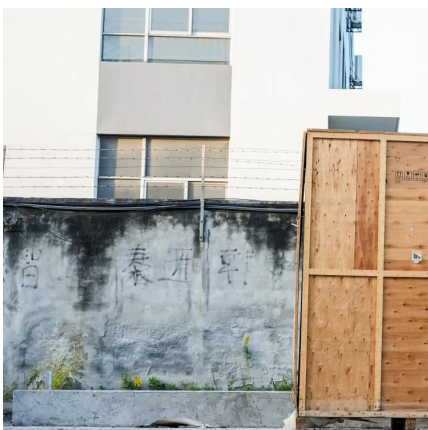
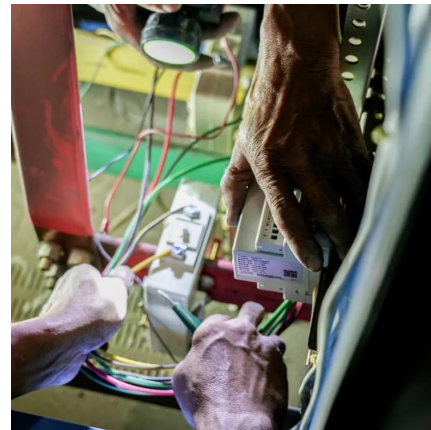


### Telecommunications Battery Rectifier 24V Base Station DC Power ...

Nov 21, 2025 · NASN rectifiers NASN rectifiers bring advanced technology to the DC power industry. Innovative engineering combines the best in efficiency and reliability to meet the ...

### Can a 24V 50Ah LiFePO4 battery be used in communication base stations

In conclusion, a 24V 50Ah LiFePO4 battery can definitely be used in communication base stations, especially those with lower power requirements. Its long cycle life, high energy ...



### SXWPS24VX10001

The SpaceLogic PS-24V power supply module is designed to accommodate the specific power requirements for the AS-P server and its connected I/O modules. The module accommodates 24 ...

### [Understanding Power Modules: Design Principles.](#)

Jul 29, 2024 · Power modules step up or down voltage levels in telecom, especially in power base stations, routers, and network switches. Industrial Applications: Power modules are perfectly ...



[Can a 24V 150Ah battery be used in a telecom base station?](#)

Nov 24, 2025 · A 24V 150Ah battery can potentially be used in a telecom base station, but it is crucial to assess its compatibility with the existing power infrastructure. The voltage of 24V is a ...



[Eaton APR24-3G Telecom Rectifier](#)

Sep 10, 2024 · Eaton DC Power Solutions The Eaton® APR24-3G Access Power Rectifier is the 24V series of rectifier modules designed specifically for telecom access networks and light ...



[DC Power Rectifiers and Power Supplies , 12V ...](#)

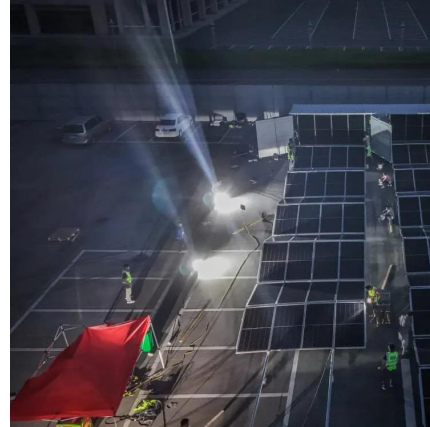
Power Supplies - Heavy Duty Series Input: 115/230 VAC Output: 12 or 24 VDC, 5 - 35 Amps These super-rugged DC supplies are ideal for ...





## 5G Base Station Complexity Drives the Need for Low-EMI DC/DC Module

Base stations typically use a 48V input supply that is stepped down by DC/DC converters to 24V or 12V, then further stepped down to the many subrails ranging from 3.3V to less than 1V to ...

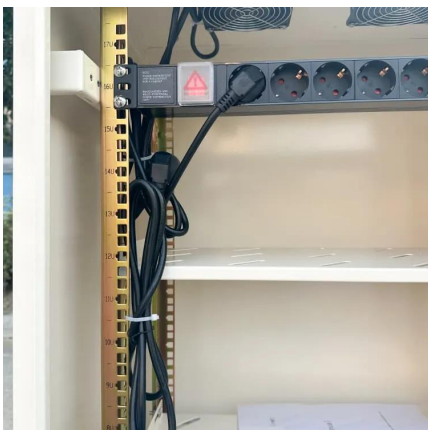


### [How to change MPPT from 12V to 24V](#)

Jul 11, 2021 · This should be automatic according to the instructions for an older MPPT 100/50. "When the 24V battery is reconnected later in the day the system voltage is restored to 24V ...

### [Base Station Solar Storage Integrated System Solution](#)

Apr 17, 2025 · Stable and reliable: the power module adopts isolated circuit design scheme; Intelligent collaboration: support turnkey monitoring of PV modules, rectifier modules and ...



### [5G Base Station Complexity Drives the Need ...](#)

Base stations typically use a 48V input supply that is stepped down by DC/DC converters to 24V or 12V, then further stepped down to the many ...



[DC Power Rectifiers and Power Supplies , 12V DC , 24V DC](#)

Power Supplies - Heavy Duty Series Input: 115/230 VAC Output: 12 or 24 VDC, 5 - 35 Amps  
These super-rugged DC supplies are ideal for powering 12 and 24 volt communication ...



## Contact Us

---

For technical specifications, project proposals, or partnership inquiries, please visit:  
<https://eiei.pl>

### Scan QR Code for More Information



<https://eiei.pl>