

# Base station power control board





## Overview

---

What is a monitoring-and-control solution for a base station?

Monitoring and controlling the performance of a base station's PA makes it possible to maximize the output power while achieving optimum linearity and efficiency. This article discusses the elements of a monitoring-and-control solution for the PA using discrete components—and describes an integrated solution.

What is a base station?

Base Stations or Base transceiver stations are a crucial part of the Telecom infrastructure that connects wireless devices to a central hub, accounting for a more significant amount of energy consumption in the Telecom industry.

How can a base station's power amplifier be optimized?

By monitoring and controlling the performance of the base station's power amplifier (PA), for example, it is possible to maximize the PA's output power while achieving optimum linearity and efficiency.

How does a power amplifier affect a wireless base station?

In wireless base stations, the power amplifier (PA) dominates signal-chain performance in terms of power dissipation, linearity, efficiency, and cost. Monitoring and controlling the performance of a base station's PA makes it possible to maximize the output power while achieving optimum linearity and efficiency.



## Base station power control board

---



### [Monitor And Control Base-Station Power Amps](#)

Apr 12, 2007 · Low-cost components are readily available for creating the monitoring and control circuitry for optimum cellular base-station amplifier ...

### [Wireless Base Station Solutions](#)

Jun 17, 2025 · Qorvo's RF components enhance wireless base stations with high-linearity, efficient signal routing, and 5G-ready performance.



### [Smart Power of Communication Base Station](#)

Using 5G Internet of things technology, combined with data analysis, to improve the traditional power management level, and to achieve the visible, measurable, controllable, and linkage of ...

### **Discrete**

Introduction In wireless base stations, the power amplifier (PA) dominates signal-chain performance in terms of power dissipation, linearity, efficiency, and cost. Monitoring and ...



[OPower2 Smart Load Manager-Shanghai KingSi Power Co.,Ltd.](#)

OPower2 Smart Load Manager This series of products are suitable for differentiated power backup of base stations, built-in KSiS1 series products, installed in a 19-inch standardized low ...



**Basestation**

May 4, 2021 · Solutions Base Stations or Base transceiver stations are a crucial part of the Telecom infrastructure that connects wireless devices to a central hub, accounting for a more ...



[Extra required attenuation as function of on ...](#)

Download scientific diagram , Extra required attenuation as function of on-board base station power for GSM1800 network. from publication: Aircraft ...





## [What Is a Base Station PCB? A Complete Guide for 2025](#)

Jun 14, 2025 · A base station PCB is a high-frequency printed circuit board used in wireless communication base stations. Unlike standard PCBs, these boards are designed to carry RF ...



## [Monitor And Control Base-Station Power Amps](#)

Apr 12, 2007 · Low-cost components are readily available for creating the monitoring and control circuitry for optimum cellular base-station amplifier linearity with high efficiency.

## [TB8100 Specifications Manual](#)

Apr 30, 2021 · Note: The Power Save control panel does not shut down in Sleep and Deep Sleep modes if the reciter is fitted with a TaitNet RS-232 system interface board (TBA10L0).



## [Explain the role of a Base Station Controller \(BSC\) in GSM.](#)

Nov 8, 2023 · The Base Station Controller (BSC) is a critical component in a GSM (Global System for Mobile Communications) network. It plays a central role in managing multiple Base ...



## Discrete

Introduction In wireless base stations, the power amplifier (PA) dominates signal-chain performance in terms of power dissipation, linearity, ...



### [Small Cells, Big Impact: Designing Power Solutions for 5G ...](#)

Apr 1, 2023 · Small cells are smaller and cheaper than a cell tower and can be installed in a variety of areas, bringing more base stations closer to users. A large number of base stations ...

### [5G base station architecture, Part 1: Evolution](#)

May 16, 2015 · Power consumption is dominated by RF power-amplifiers and the air conditioning that is needed to keep the temperatures reasonable ...



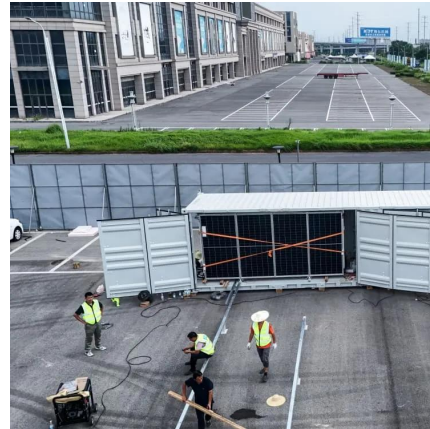
### [Base Station Quick Start Guide](#)

Base Station Base Station Software is our reference tool for designing and testing all currently manufactured NCD Devices. Base Station will assist ...



### Power Base Station

The transmitter characteristics define RF requirements for the wanted signal transmitted from the UE and base station, but also for the unavoidable unwanted emissions outside the transmitted ...



### [Heavy Copper PCBs in Base Stations: Design ...](#)

Jul 18, 2025 · In base stations, which power cellular networks and handle significant electrical loads, heavy copper PCBs are often used in power ...

### [3900 Series Base Station Configuration Principles](#)

Mar 26, 2022 · The minimum configuration of a macro base station includes the minimum configurations of cabinets, baseband processing boards, main control boards, and RF modules.



### [Base Station Power Board UPEUe for BBU5900](#)

Base Station Power Board UPEUe for BBU5900 offers reliable power management. HW brand, 1-year warranty, and origin in CN. Ideal for telecom applications., Alibaba



### [Heavy Copper PCBs in Base Stations: Design and ...](#)

Jul 18, 2025 · In base stations, which power cellular networks and handle significant electrical loads, heavy copper PCBs are often used in power distribution systems. They ensure stable ...



### [MTR3000 Base Station/Repeater Specifications](#)

Mar 2, 2010 · MTR3000 BASE STATION / REPEATER MTR3000 is a MOTOTRBTM integrated voice and data base station/repeater designed to meet the requirements of small public safety, ...

### [Communication Base Station Power Amplifier PCB Solution](#)

Aug 10, 2025 · An ideal base station power amplifier must exhibit high linearity to prevent signal distortion, high power efficiency to minimize energy consumption and heat, broad bandwidth to ...



### [Small Cell Base Station](#)

Panasonic's Electronic Components: Let us please introduce you Panasonic's various electronic components for Small Cell Base Station. With the aim of supporting diverse types of base ...



### [uplink power control in 5g](#)

Dec 2, 2023 · Uplink power control in 5G (Fifth Generation) networks is a crucial mechanism that optimizes the transmission power of user equipment (UE) to ensure efficient communication ...



## Contact Us

---

For technical specifications, project proposals, or partnership inquiries, please visit:  
<https://eiei.pl>

### Scan QR Code for More Information



<https://eiei.pl>