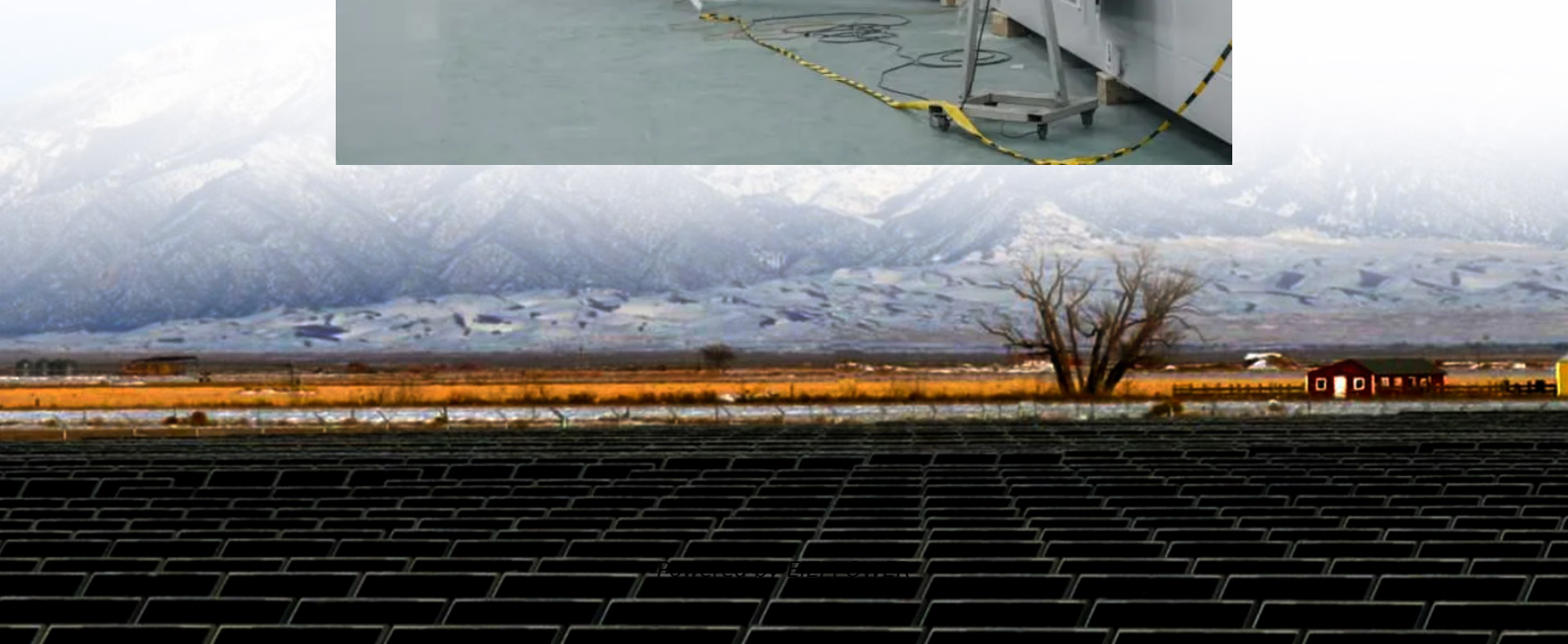


Base station mobile communication equipment includes





Overview

What is a base station in a telecommunications network?

A base station is a critical component in a telecommunications network. A fixed transceiver that acts as the central communication hub for one or more wireless mobile client devices. In the context of cellular networks, it facilitates wireless communication between mobile devices and the core network.

What is a mobile base station?

A mobile base station, also called a base transceiver station (BTS), is a fixed radio transceiver in any mobile communication network or wide area network (WAN). The base station connects mobile devices to the network and routes them to other terminals in the network or to the core network of a mobile operator. Read more [Explore Mobile base](#).

What are the components of a base station?

The base station will have one or more RF antennas installed to transmit and receive RF signals from other devices. The block diagram of a base station typically includes the following key components: Baseband Processor: The baseband processor too deals with different communication protocols and interfaces with mobile network infrastructure.

What are base stations used for?

In addition to supporting traditional mobile communication, base stations also play a vital role in two-way radio systems such as citizens band (CB) radio and ham radio. These fixed base stations are commonly used by dispatchers to communicate directly with multiple mobile operators in the field.



Base station mobile communication equipment includes



[4.Basic Configuration of Base Stations . About ...](#)

The basic base station equipment for digital mobile communications systems consists of amplifiers (AMP) to amplify the transmission and reception ...

Base Station Equipment - Types and Applications of Mobile Communication

DBS3900 Dual-Mode Base Station is the fourth generation base station developed by Huawei. It features a multi-mode modular design and supports three working modes: GSM mode, ...



[Base Stations and Cell Towers: The Pillars of Mobile ...](#)

May 16, 2024 · Base stations and cell towers are critical components of cellular communication systems, serving as the infrastructure that supports seamless mobile connectivity. These ...



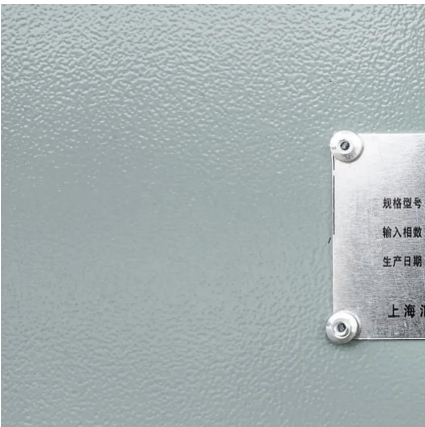
[What Is A Base Station?](#)

Apr 22, 2024 · A base station is a piece of equipment that facilitates wireless communication between devices and a network. It contains the necessary hardware and software to transmit ...



[Mobile base station , Application](#)

Explore STMicroelectronics' mobile base station solutions, enhancing connectivity and performance for telecom networks.



Types and Applications of Mobile Communication Base Stations

Oct 11, 2024 · Mobile communication base station is a form of radio station, which refers to a radio transceiver station that transmits information between mobile phone terminals through a ...



[Types and Applications of Mobile ...](#)

Oct 11, 2024 · Mobile communication base station is a form of radio station, which refers to a radio transceiver station that transmits information ...





Mobile base station , Application

Explore STMicroelectronics' mobile base station solutions, enhancing connectivity and performance for telecom networks.

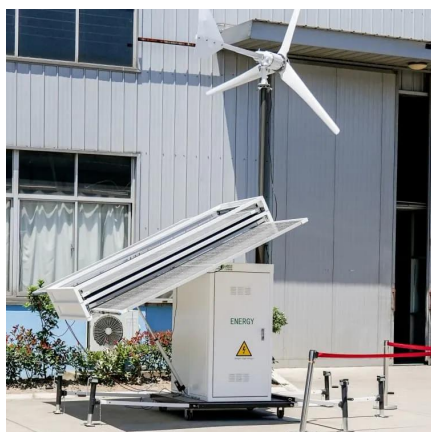


Complete Guide to 5G Base Station ...

Nov 17, 2024 · At the heart of mobile communication networks lies the main base station equipment. Central to this setup are three critical ...

Base Stations

Jul 23, 2025 · The present-day tele-space is incomplete without the base stations as these constitute an important part of the modern-day scheme ...



1. What Is a Base Station and What Are Its Core Components?

A mobile communication base station is the radio facility that covers a specific area and enables data transmission between mobile phones and the core network. It is the frontline of the entire ...



Complete Guide to 5G Base Station Construction , Key Steps, Equipment

Nov 17, 2024 · At the heart of mobile communication networks lies the main base station equipment. Central to this setup are three critical components-- BBU (Baseband Unit), RRU ...

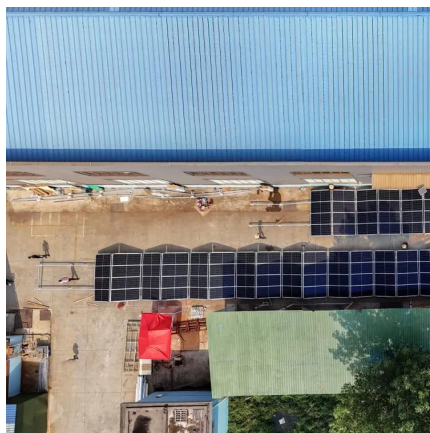


[What is a Base Station in ...](#)

Discover the role and functionality of a base station in telecommunications networks. Learn how these critical components manage communication ...

[4.Basic Configuration of Base Stations , About DOCOMO](#)

The basic base station equipment for digital mobile communications systems consists of amplifiers (AMP) to amplify the transmission and reception signals to desired levels, modems ...



Base Stations

Jul 23, 2025 · The present-day tele-space is incomplete without the base stations as these constitute an important part of the modern-day scheme of wireless communications. They are ...



[What is a Base Station in Telecommunications?](#)

Discover the role and functionality of a base station in telecommunications networks. Learn how these critical components manage communication between mobile devices and the network, ...



Contact Us

For technical specifications, project proposals, or partnership inquiries, please visit:
<https://eiei.pl>

Scan QR Code for More Information



<https://eiei.pl>