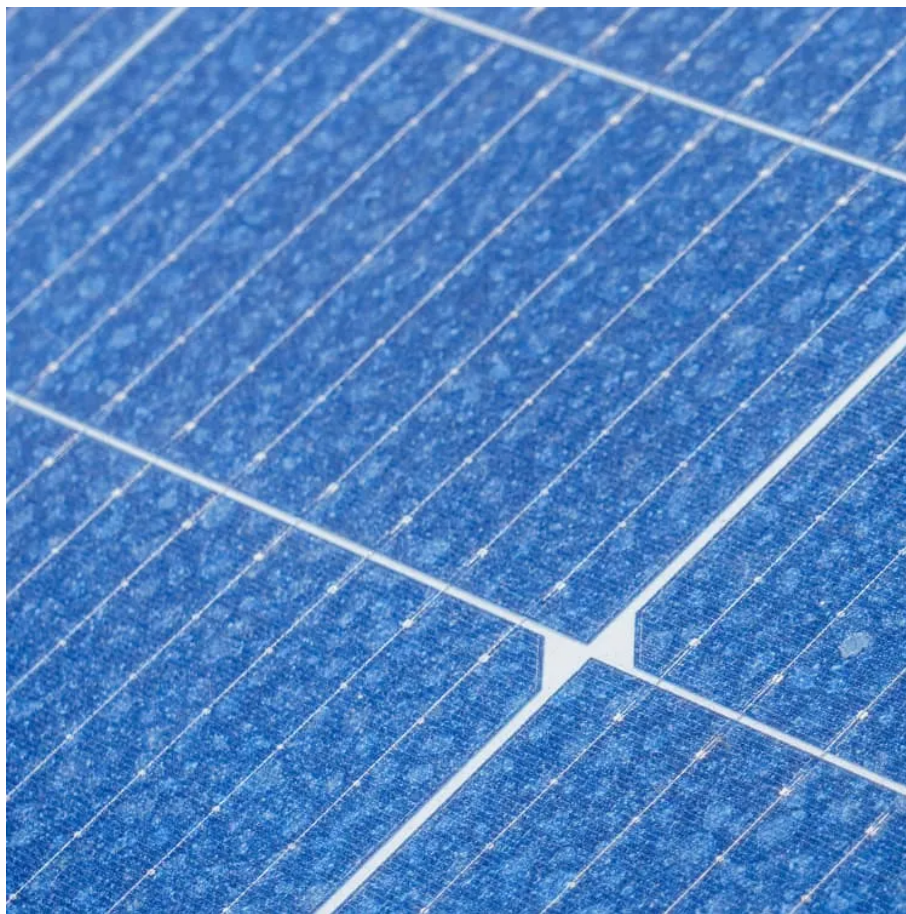


# **Base station battery can be lit**





## Overview

---

How many batteries does the base station take?

The Base Station takes four (4) 1.2V, 1300mAh nickel-metal hydride (NiMH) rechargeable batteries. Regular alkaline batteries should never be inserted into the Base Station, as they may damage the device. Once you have acquired the necessary NiMH rechargeable batteries, you can follow the steps below to replace them:.

Do I need to replace my base station's batteries?

If you're not certain which system you have, see the [Which Version of the SimpliSafe® System Do I Have](#) article. You will likely never need to replace your Base Station's batteries as they are rechargeable and meant to last. The Base Station takes four (4) 1.2V, 1300mAh nickel-metal hydride (NiMH) rechargeable batteries.

Can you put alkaline batteries in a base station?

NEVER insert regular alkaline batteries into the Base Station as they may damage the device. Plug your Base Station back into power. Was this helpful?

Does your Keypad look like the one pictured to the left?

.

Which battery is best for telecom base station backup power?

Among various battery technologies, Lithium Iron Phosphate (LiFePO4) batteries stand out as the ideal choice for telecom base station backup power due to their high safety, long lifespan, and excellent thermal stability.



## Base station battery can be lit



### Can telecom lithium batteries be used in 5G telecom base stations?

Jul 1, 2025 · It is easy to install and provides reliable backup power. Conclusion In conclusion, telecom lithium batteries can indeed be used in 5G telecom base stations. Their high energy ...

### [Base Station Lithium Battery System , Huijue Group E-Site](#)

The Silent Shift in Energy Paradigms By 2028, 70% of new base station battery systems will likely incorporate recycled materials--a necessity given cobalt supply constraints. However, the real ...



### [Base station battery can be lit](#)

Li5k Base Battery Station The Li5k Base Battery Station is designed specifically for the needs of heavy-duty applications. With 5000 watt-hours of energy, this station is designed to be paired ...



### [How about base station energy storage batteries , NenPower](#)

Apr 7, 2024 · This section delves into the different types of batteries commonly used in base station energy storage and evaluates their respective strengths and weaknesses. Lithium-ion ...



### [Can base station batteries be used for energy storage](#)

2) The optimized configuration results of the three types of energy storage batteries showed that since the current tiered-use of lithium batteries for communication base station backup power ...



### [Telecom Base Station Backup Power Solution: Design Guide ...](#)

Jun 5, 2025 · Discover the 48V 100Ah LiFePO4 battery pack for telecom base stations: safe, long-lasting, and eco-friendly. Optimize reliability with our design guide.



### [How about base station energy storage ...](#)

Apr 7, 2024 · This section delves into the different types of batteries commonly used in base station energy storage and evaluates their ...





## What Are the Key Considerations for Telecom Batteries in Base Stations?

Telecom batteries for base stations are backup power systems that ensure uninterrupted connectivity during grid outages. Typically using valve-regulated lead-acid (VRLA) or lithium ...



## Revolutionizing Base Station Power: The Surge of LiFePO4 Batteries ...

Oct 10, 2023 · Explore the paradigm shift in base station power supply as China Tower adopts LiFePO4 battery packs, replacing lead-acid batteries for enhanced efficiency and ...

## [Base Station Energy Storage Battery Systems: Powering ...](#)

How Battery Storage Systems Solve the Base Station Dilemma Modern base station energy storage battery systems combine lithium-ion technology with smart energy management. Let's ...



## [Telecom Base Station Backup Power Solution: ...](#)

Jun 5, 2025 · Discover the 48V 100Ah LiFePO4 battery pack for telecom base stations: safe, long-lasting, and eco-friendly. Optimize reliability with ...



### [5G Base Station Lithium Battery: Capacity and Discharge ...](#)

Sep 26, 2025 · EverExceed's high-rate discharge LiFePO4 batteries are engineered to handle these demanding conditions, ensuring stable and efficient power delivery to 5G infrastructure. ...



## Contact Us

---

For technical specifications, project proposals, or partnership inquiries, please visit:  
<https://eiei.pl>

### Scan QR Code for More Information



<https://eiei.pl>