

BMS single battery voltage is low





Overview

What is a battery balancing system (BMS)?

The BMS is an important part of maintaining the normal operation of the battery system, with special attention to balancing the battery BMS voltage to ensure the stability and life of the battery pack. The voltage of the BMS ranges from tens of volts to hundreds of volts. The higher the voltage, the greater the power.

Does BMS output match battery pack output?

However, when I measure the voltage across the BMS P- cable and the Battery Pack's positive terminal, I am only getting 47V even though the pack measures 58V. I read that the BMS output is supposed to match the pack output, but can't think of anything I did wrong.

How does a BMS monitor a battery pack?

Detection of imbalance: The BMS continuously monitors the voltage of each cell or module in the battery pack. When the voltage of some cells is significantly higher than that of others, or the voltage difference exceeds a preset threshold, the BMS determines that the battery pack is unbalanced.

What is a BMS low voltage range?

Low voltage range: The input voltage of the low voltage range is generally between 1V and 12V, which is suitable for mobile devices, sensors, handheld tools, and other small devices. These applications usually require a certain volume and weight of the battery and need to operate in a BMS low voltage range, while requiring a long service life.



BMS single battery voltage is low



[BMS Diagnostics: Troubleshooting Battery Module Anomalies](#)

Explore a real case of battery module failure and how BMS diagnostics revealed a broken FPC board in the CCS, causing false voltage alarms in a 1P52S-314Ah lithium-ion pack.

[Voltage Settings for BMS, Chargers and Loads](#)

Feb 1, 2022 · Normal System Operating voltage range Load low-voltage disconnect point BMS System under-voltage cut-out point BMS single cell under-voltage cut-out setting times the ...



[What is the Minimum Voltage for BMS?](#)

Dec 8, 2023 · Understanding BMS Voltage Thresholds A Battery Management System (BMS) is essential for the safe operation of lithium batteries. It monitors and manages various ...



[Common BMS Problems And BMS ...](#)

Dec 26, 2023 · By continually tracking voltage, current, temperature changes, and other metrics, a BMS can prevent issues like overcharging, deep ...



SOLVED: Is it Normal For BMS Voltage Reads Less Than Battery ...

1 day ago · However, when I measure the voltage across the BMS P- cable and the Battery Pack's positive terminal, I am only getting 47V even though the pack measures 58V. I read ...



"Low Battery (Victron) and"Total Voltage ...

Jan 25, 2025 · Reinstalled the ESS via MK2 and setting voltage for Bulk is 56.4V and Absorption 54V. Maximum voltage for alarm set to 58.7V and ...



How to Detect and Keep Types of BMS Voltage for Your Battery ...

Sep 7, 2023 · BMS is an important part of maintaining the normal operation of a battery system, and balancing the BMS voltage is particularly critical.





[BMS Diagnostics: Troubleshooting Battery ...](#)

Explore a real case of battery module failure and how BMS diagnostics revealed a broken FPC board in the CCS, causing false voltage alarms in ...

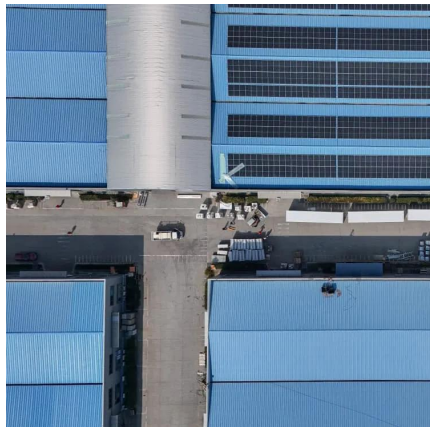
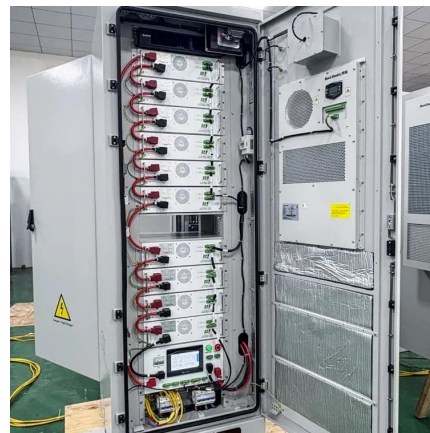


[How to Detect and Keep Types of BMS ...](#)

Sep 7, 2023 · BMS is an important part of maintaining the normal operation of a battery system, and balancing the BMS voltage is particularly critical.

[BMS lowervoltage fault](#)

BMS lowervoltage fault FAQBAT Issue introduction The inverter screen displays "BMS_Lower Voltage" Confirmation of basic information [Photo]SN number of the inverter and battery. ...



batteries

Jan 18, 2023 · I made a 24 V, 4400 mAh lithium-ion battery using 18650 cells connected in a 7S 2P configuration. When I check the pack output voltage without the BMS it's around 21 V (very ...



"Low Battery (Victron) and"Total Voltage Fault" (BMS)

Jan 25, 2025 · Reinstalled the ESS via MK2 and setting voltage for Bulk is 56.4V and Absorption 54V. Maximum voltage for alarm set to 58.7V and minimum voltage 44.8V. With this setting ...



How to Test a BMS: A Step-by-Step Guide

Apr 30, 2025 · Learn how to test if your BMS is working correctly with expert methods. Avoid battery failures & ensure safety with our step-by-step guide.

Common BMS Problems And BMS Troubleshooting

Dec 26, 2023 · By continually tracking voltage, current, temperature changes, and other metrics, a BMS can prevent issues like overcharging, deep discharging, and operating outside safe ...



How to Test a BMS: A Step-by-Step Guide

Apr 30, 2025 · Learn how to test if your BMS is working correctly with expert methods. Avoid battery failures & ensure safety with our step-by-step guide.



Contact Us

For technical specifications, project proposals, or partnership inquiries, please visit:
<https://eiei.pl>

Scan QR Code for More Information



<https://eiei.pl>