

Are all operator base stations outdoors





Overview

All mobile operators ensure that their radio base stations, and masts are designed and built so that the public are not exposed to radio frequency fields above the strict safety guidelines which govern and limit public exposure to electromagnetic fields. Why do mobile operators need a radio base station?

All mobile operators ensure that their radio base stations, and masts are designed and built so that the public are not exposed to radio frequency fields above the strict safety guidelines which govern and limit public exposure to electromagnetic fields.

What is an outdoor compact base station?

Outdoor compact base stations These base stations are designed for installation in any type of outdoor scenario. They offer a high degree of IP protection, which allows them to operate in the most adverse conditions (rain, extreme heat, wind, humidity, saline environments.) without requiring an additional mechanical cover.

Can a single site host multiple base stations?

A single site can host multiple base stations. Different mobile network operators may install their own equipment on the same site. Even for a single operator, multiple network generations such as 2G, 3G, 4G, and 5G can coexist at the same site. Antennas can be omnidirectional or directional.

Do mobile phones need a base station?

Mobile phones and other mobile devices require a network of base stations in order to function. The base station antennas transmit and receive RF (radio frequency) signals, or radio waves, to and from mobile phones near the base station. Without these radio waves, mobile communications would not be possible.



Are all operator base stations outdoors

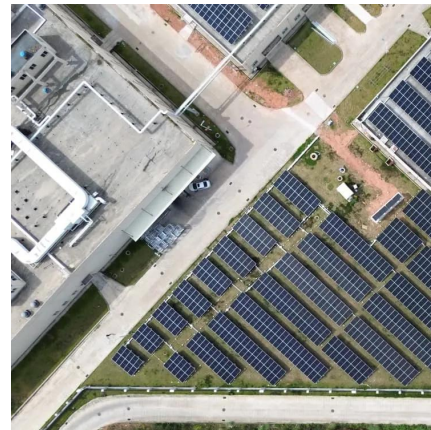


Base stations

Supervision of the radiation safety of base stations Mobile network operators are responsible for complying with the limit values. Among other things, the operators must assess the ...

[MOBSS Multi-Operator Base Station Subsystem](#)

May 8, 2023 · MOBSS, which stands for Multi-Operator Base Station Subsystem, is an advanced telecommunications infrastructure solution designed to enable multiple mobile network ...



[CBRS: What you need to know](#)

Dec 18, 2019 · These lower power base stations (Maximum EIRP: 30dBm/10MHz) can be self-installed and located both indoors and outdoors (<=6 metres in height). In contrast, Category B ...

[GUIDANCE NOTE FOR SUBMISSION OF APPLICATIONS BY](#)

Oct 21, 2020 · 3. For installation of new radio base stations and reconfiguration of existing radio base stations involving changes in the structural design and planning perspective of the



parent ...



Optimizing the ultra-dense 5G base stations in urban outdoor ...

Dec 1, 2020 · Due to the high propagation loss and blockage-sensitive characteristics of millimeter waves (mmWaves), constructing fifth-generation (5G) cellular networks involves deploying ...



Base station types: a solution for every deployment scenario

Apr 28, 2021 · Outdoor compact base stations
These base stations are designed for installation in any type of outdoor scenario. They offer a high degree of IP protection, which allows them to ...



Pole-Mounted Base Stations for WiMAX Networks

May 10, 2010 · Tailored to operators' diverse needs, ZTE's pole-mounted base stations have effectively solved problems that plague operators during network construction. This solution is ...



LCQ18: Radio base stations

Jan 14, 2009 · The Government will continue to monitor the installation of outdoor radio base stations and take necessary actions to facilitate the operators to roll out mobile network in ...



On-site Energy Utilization Evaluation of ...

Aug 18, 2023 · Figure 1 Block diagram of the site. Since the sites we visited were all outdoors, there wasn't much more equipment consuming the energy besides the radio units and the ...

#5GCheckTheFacts > 5G masts and base stations

Dec 3, 2025 · All mobile operators ensure that their radio base stations, and masts are designed and built so that the public are not exposed to radiofrequency fields above the strict safety ...



BS (Base Station)

Mar 4, 2023 · A base station (BS) is a key component of modern wireless communication networks, providing the interface between wireless ...



[Complete Guide to 5G Base Station ...](#)

Nov 17, 2024 · Explore how 5G base stations are built--from site planning and cabinet installation to power systems and cooling solutions. Learn the ...

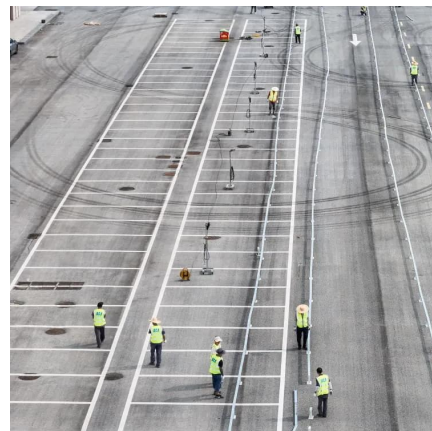


[Understanding where and when users can ...](#)

Feb 25, 2021 · There are several coverage metrics which operators, regulators and media often quote: Population coverage. In South Korea, ...

[What is a Base Station in ...](#)

What is a Base Station? A base station is a critical component in a telecommunications network. A fixed transceiver that acts as the central ...



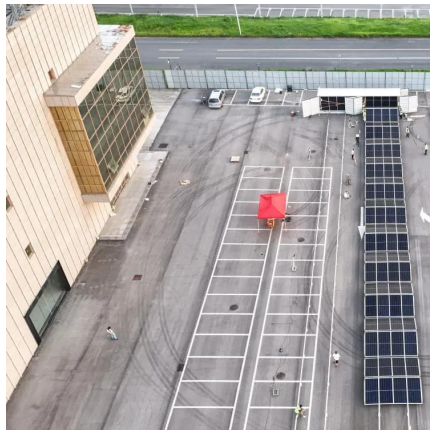
[Base stations and networks](#)

4 days ago · Mobile phones and mobile devices require a network of radio base stations to function. Radio waves have been used for communication for more than 100 years.



More Than 25,000 5G Outdoor Base Stations and Over ...

According to Zhang Jianming, Deputy Director of Shanghai Municipal Commission of Economy and Information Technology, more than 25,000 outdoor 5G base stations have been built in ...

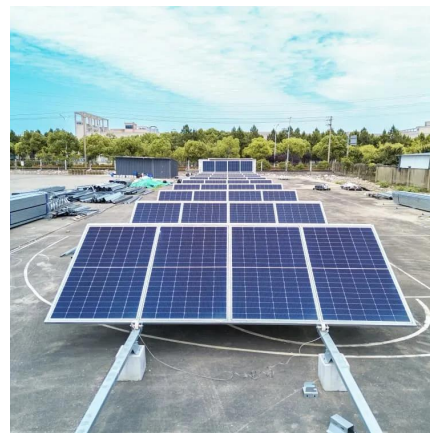


Mobile Base Stations: Cells, Sectors, Carriers Explained

Oct 2, 2025 · A single site can host multiple base stations. Different mobile network operators may install their own equipment on the same site. Even for a single operator, multiple network ...

Mobile Base Stations: Cells, Sectors, Carriers ...

Oct 2, 2025 · A single site can host multiple base stations. Different mobile network operators may install their own equipment on the same site. ...



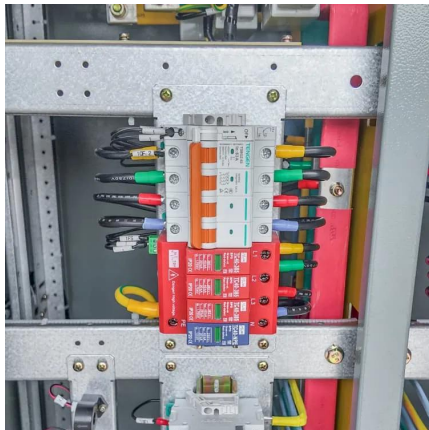
Shanghai Leads China for Outdoor 5G Base ...

Dec 13, 2024 · Shanghai has built more than 83,000 5G base stations, also known as cell towers, and over 10,000 three-component carrier 5G ...



Shanghai Leads China for Outdoor 5G Base Stations, Vice

Dec 13, 2024 · Shanghai has built more than 83,000 5G base stations, also known as cell towers, and over 10,000 three-component carrier 5G-advanced base stations, which combine three ...



Shanghai to set up nearly 10,000 new 5G-A base stations this ...

Feb 7, 2025 · Shanghai will establish up to 10,000 new 5G-A base stations this year, routing more than 70 percent of the city's internet traffic through 5G network.

Embrace the outdoor

Streamlined maintenance and operation: Building PMR networks with outdoor base stations eliminates the need for batteries, air conditioning units, and large spare parts stocks ...



Contact Us

For technical specifications, project proposals, or partnership inquiries, please visit: <https://eiei.pl>



Scan QR Code for More Information



<https://eiei.pl>