

5g base station power consumption inspection





Overview

Should power consumption models be used in 5G networks?

This restricts the potential use of the power models, as their validity and accuracy remain unclear. Future work includes the further development of the power consumption models to form a unified evaluation framework that enables the quantification and optimization of energy consumption and energy efficiency of 5G networks.

Can 3GPP reduce base station energy consumption in 5G NR BS?

Aiming at minimizing the base station (BS) energy consumption under low and medium load scenarios, the 3GPP recently completed a Release 18 study on energy saving techniques for 5G NR BSs . A broad range of techniques was evaluated in terms of the obtained network energy saving (NES) gain and their impact to the user-perceived throughput (UPT).

How does mobile data traffic affect the energy consumption of 5G base stations?

The explosive growth of mobile data traffic has resulted in a significant increase in the energy consumption of 5G base stations (BSs).

How can we improve the energy efficiency of 5G networks?

To improve the energy efficiency of 5G networks, it is imperative to develop sophisticated models that accurately reflect the influence of base station (BS) attributes and operational conditions on energy usage.



5g base station power consumption inspection



[Final draft of deliverable D.WG3-02-Smart Energy Saving ...](#)

May 7, 2021 · Change Log This document contains Version 1.0 of the ITU-T Technical Report on "Smart Energy Saving of 5G Base Station: Based on AI and other emerging technologies to ...

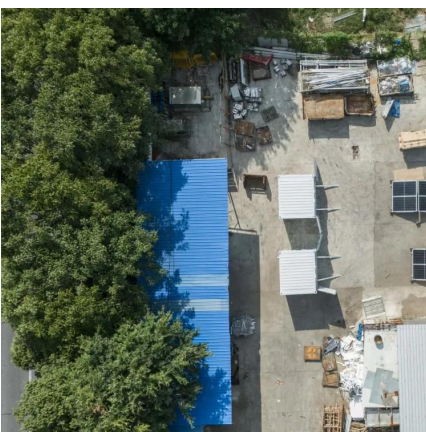
[5G Base Station Power Consumption Using Machine Learning](#)

Apr 25, 2025 · Accurate power consumption forecasting plays a pivotal role in energy management, influencing both utility operations and customer experience. With increasing ...



A Power Consumption Model and Energy Saving Techniques for 5G ...

May 28, 2023 · Aiming at minimizing the base station (BS) energy consumption under low and medium load scenarios, the 3GPP recently completed a Release 18 study on energy saving ...



Power Consumption Analysis of a 5G NR Base Transceiver Station ...

Jul 17, 2025 · This work has explored the power consumption of an outdoor commercial 5G NR base station using an inexpensive and custom-built power measurement setup.



Comparison of Power Consumption Models for 5G Cellular Network Base

Jul 1, 2024 · This paper conducts a literature survey of relevant power consumption models for 5G cellular network base stations and provides a comparison of the models. It highlights ...



[Energy consumption optimization of 5G base stations ...](#)

Aug 1, 2023 · An energy consumption optimization strategy of 5G base stations (BSs) considering variable threshold sleep mechanism (ECOS-BS) is proposed, which includes the initial ...



[Power consumption based on 5G communication](#)

Oct 17, 2021 · At present, 5G mobile traffic base stations in energy consumption accounted for 60% ~ 80%, compared with 4G energy consumption increased three times. In the future, high ...





Optimal energy-saving operation strategy of 5G base station ...

Dec 1, 2025 · To further explore the energy-saving potential of 5G base stations, this paper proposes an energy-saving operation model for 5G base stations that incorporates ...



[Modelling the 5G Energy Consumption Using Real-world ...](#)

Sep 15, 2025 · Accurate energy consumption modeling is essential for developing energy-efficient strategies, enabling operators to optimize resource utilization while maintaining network ...

[Power Consumption Modeling of 5G Multi-Carrier Base ...](#)

Jan 23, 2023 · However, there is still a need to understand the power consumption behavior of state-of-the-art base station architectures, such as multi-carrier active antenna units (AAUs), ...



Contact Us

For technical specifications, project proposals, or partnership inquiries, please visit:
<https://eiei.pl>



Scan QR Code for More Information



<https://eiei.pl>