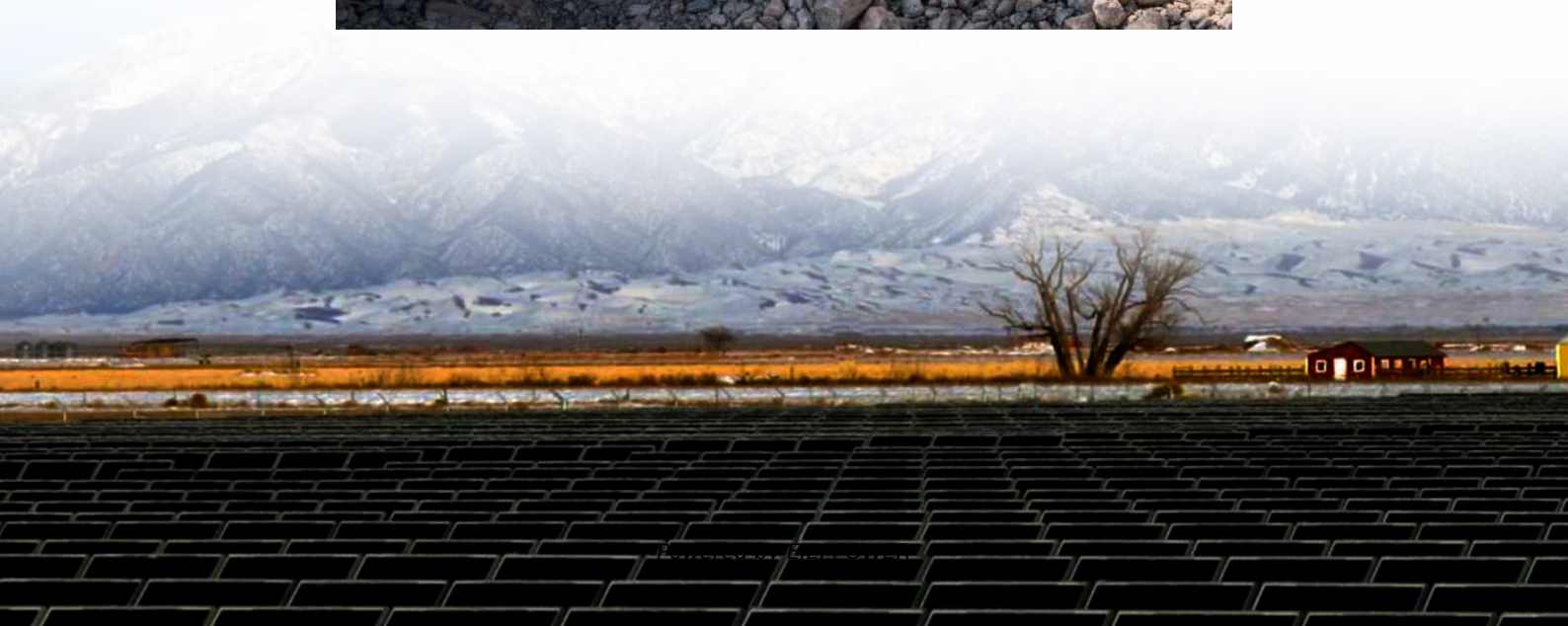


# 5g base station is out of power





## Overview

---

This paper proposes a distribution network fault emergency power supply recovery strategy based on 5G base station energy storage. This strategy introduces Theil's entropy and modified Gini coef.

Why are 5G base stations important?

The denseness and dispersion of 5G base stations make the distance between base station energy storage and power users closer. When the user's load loses power, the relevant energy storage can be quickly controlled to participate in the power supply of the lost load.

Can 5G base station energy storage be used in emergency restoration?

The massive growth of 5G base stations in the current power grid will not only increase power consumption, but also bring considerable energy storage resources. However, there are few studies on the feasibility of 5G base station energy storage participating in the emergency restoration of the power grid.

What factors affect the energy storage reserve capacity of 5G base stations?

This work explores the factors that affect the energy storage reserve capacity of 5G base stations: communication volume of the base station, power consumption of the base station, backup time of the base station, and the power supply reliability of the distribution network nodes.

How many 5G base stations are there in China?

Since China took the first step of 5G commercialization in 2019, by 2022, the number of 5G base stations built in China will reach 2.31 million. The power consumption of 5G base stations will increase by 3-4 times compared with 4G base stations [1, 2], significantly increasing the energy storage capacity configured in 5G base stations.



## 5g base station is out of power

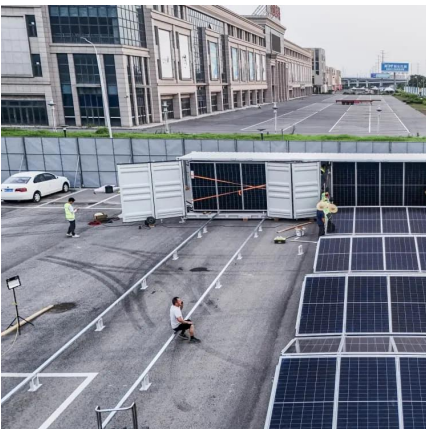


### The Critical Role of Redundant Power Design in 5G Base Stations

When 5G signals penetrate urban high-rises and reach remote rural areas, few people pay attention to the 'energy core' behind it all-- the base station power system. Among the many ...

### Why does 5g base station consume so much power and how ...

Apr 3, 2025 · The power consumption of the 5G base station mainly comes from the AU module processing and conversion and high power-consuming high radio frequency signals, the ...



### What are the power delivery challenges with ...

Jan 22, 2025 · The two primary power delivery challenges with 5G new radio (NR) are improving operational efficiency and maximizing sleep time. For ...

### What are the power delivery challenges with 5G to maximize

Jan 22, 2025 · The two primary power delivery challenges with 5G new radio (NR) are improving operational efficiency and maximizing sleep time. For example, Ericsson estimates that 94%

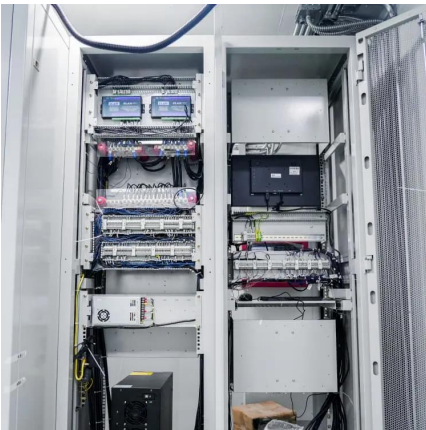


of ...



### [Energy Management of Base Station in 5G and B5G: Revisited](#)

Apr 19, 2024 · Since mmWave base stations (gNodeB) are typically capable of radiating up to 200-400 meters in urban locality. Therefore, high density of these stations is required for ...



### [Why does 5g base station consume so much ...](#)

Apr 3, 2025 · The power consumption of the 5G base station mainly comes from the AU module processing and conversion and high power ...



### [What is the Power Consumption of a 5G Base Station?](#)

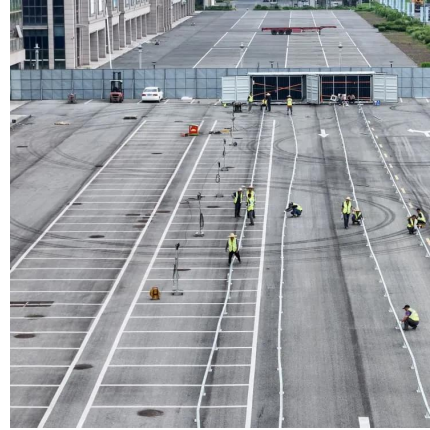
Nov 15, 2024 · As 5G becomes the new normal, questions of 5G base station power consumption become more relevant than ever, not only for operators eager to manage their costs but also ...





### Final draft of deliverable D.WG3-02-Smart Energy Saving ...

May 7, 2021 · Technical Report ITU-T Smart Energy Saving of 5G Base Station: Based on AI and other emerging technologies to forecast and optimize the management of 5G wireless network ...



### What are the challenges in deploying 5G base stations?

Conclusion Deploying 5G base stations is a complex and challenging task. From technical hurdles like high - frequency spectrum limitations and power consumption to regulatory issues and ...

### **Distribution network restoration supply method considers 5G base**

Feb 15, 2024 · This paper proposes a distribution network fault emergency power supply recovery strategy based on 5G base station energy storage. This strategy intro...



### Energy consumption optimization of 5G base stations ...

Aug 1, 2023 · The 5G BS power consumption mainly comes from the active antenna unit (AAU) and the base band unit (BBU), which respectively constitute BS dynamic and static power ...



## [Power consumption based on 5G communication](#)

Oct 17, 2021 · At present, 5G mobile traffic base stations in energy consumption accounted for 60% ~ 80%, compared with 4G energy consumption increased three times. In the future, high ...



## Contact Us

---

For technical specifications, project proposals, or partnership inquiries, please visit:  
<https://eiei.pl>

## Scan QR Code for More Information



<https://eiei.pl>