

500kw centralized grid-connected inverter





Overview

fieldbus connection and integrated DC cabinets. The inverters are customized and configured to meet end user needs and are available with short delivery times.

What is a solar Ware 500 inverter?

The SOLAR WARE 500 is an advanced multilevel inverter system offering up to 500kW, with an operating range of 320 ~ 600 V. SOLAR WARE 500 operates at 97.7% maximum efficiency. With high efficiency and robust design, TMEIC can significantly maximize array performance and uptime.

What is the smallest 500 kW inverter?

The SOLAR WARE 500 advanced multilevel inverter uses a new circuit topology to create 3 output voltage levels. With this new design, the inverter size has also been significantly reduced, achieving the world's smallest 500 kW inverter, with switching loss reduced by 56%.

Which solar inverters are suitable for multi-megawatt power plants?

The inverters are available from 100 kW up to 500 kW, and are optimized for cost-efficient multi-megawatt power plants. The ABB solar inverters have been developed on the basis of decades of experience in the industry and proven technology platform.

How much power does a Sungrow central inverter produce?

Sungrow central inverters come in a standard 10 and 20-foot container size, start at 500 kW and are available with up to 6.8 MW power output, which is cost-effective for large-scale installations.



500kw centralized grid-connected inverter



[Hopewind PV Products-Hopewind](#)

Centralized PV mainly builds large photovoltaic power stations in remote areas, such as deserts and mountains. In these centralized schemes, Hopewind offers a range of grid-connected ...

[Sungrow PV Central Inverter , From 500 kW to 6.8 MW](#)

Sungrow's PV central inverters convert direct current (DC) into alternating current (AC), with capacities ranging from 500 kW to 6.8 MW, making them suitable for utility-scale projects.



[500kw Grid-Connected Hybrid Inverter Solar System Kit ...](#)

Aug 8, 2025 · 500kw Grid-Connected Hybrid Inverter Solar System Kit Industrial & Commercial Energy Storage with Battery Photovoltaic System, Find Details and Price about Inverter Solar ...

[500kW central inverter compatible with low-voltage grid ...](#)

01 KS Certified with Official Test Reports
Available 02 Central inverter compatible with low-voltage grid connection 03 Equipped with the latest three-level topology, DC ground fault detection, ...



[Solar Inverters ESL 500kW-750kW - EnSmart ...](#)

Sep 1, 2025 · 500/630/750kW Central Grid - Tied PV Inverter EnSmart ...



[Advanced Energy AE_500TX-480 500KW Inverter](#)

Product Description AE 500T Advanced Energy, AE 500TX grid tied Central inverter, 3-Ph, 500kW, 480VAC, 60H The AE 500TX is designed for larger commercial and utility scale ...



[Solar inverters ABB central inverters PVI-500.0-CN 500 ...](#)

Feb 11, 2020 · ABB's new 500kW utility-grade central inverters have a number of key features. It offers high efficiency with electrolytic capacitor-free leading to longer MTBF (mean time ...





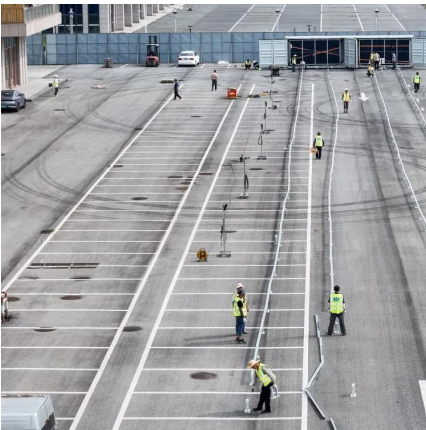
[ABB central inverters](#)

Oct 4, 2013 · Effective connectivity ABB's transformerless central inverter series enables system integrators to design the solar power plant using a combination of different power rating ...



Solar Ware 500

The SOLAR WARE 500 is an advanced multilevel inverter system offering up to 500kW, with an operating range of 320 ~ 600 V. SOLAR WARE 500 ...



[SOLO 500 Series , CENTRAL INVERTER 500 kW](#)

Aug 15, 2013 · Woodward can also deliver a complete SOLO Inverter Stations for 500 kW, 750 kW, 1000 kW and 1500 kW.



[Solar Inverters ESL 500kW-750kW - EnSmart Power](#)

Sep 1, 2025 · 500/630/750kW Central Grid - Tied PV Inverter EnSmart provides highly integrated solutions for large-scale centralized PV Plants. Usually, the installation capacity of this PV ...





[Advanced Energy AE_500TX-480 500KW ...](#)

Product Description AE 500T Advanced Energy, AE 500TX grid tied Central inverter, 3-Ph, 500kW, 480VAC, 60H The AE 500TX is designed for ...



Solar Ware 500

The SOLAR WARE 500 is an advanced multilevel inverter system offering up to 500kW, with an operating range of 320 ~ 600 V. SOLAR WARE 500 operates at 97.7% maximum efficiency.

Contact Us

For technical specifications, project proposals, or partnership inquiries, please visit:
<https://eiei.pl>

Scan QR Code for More Information



<https://eiei.pl>