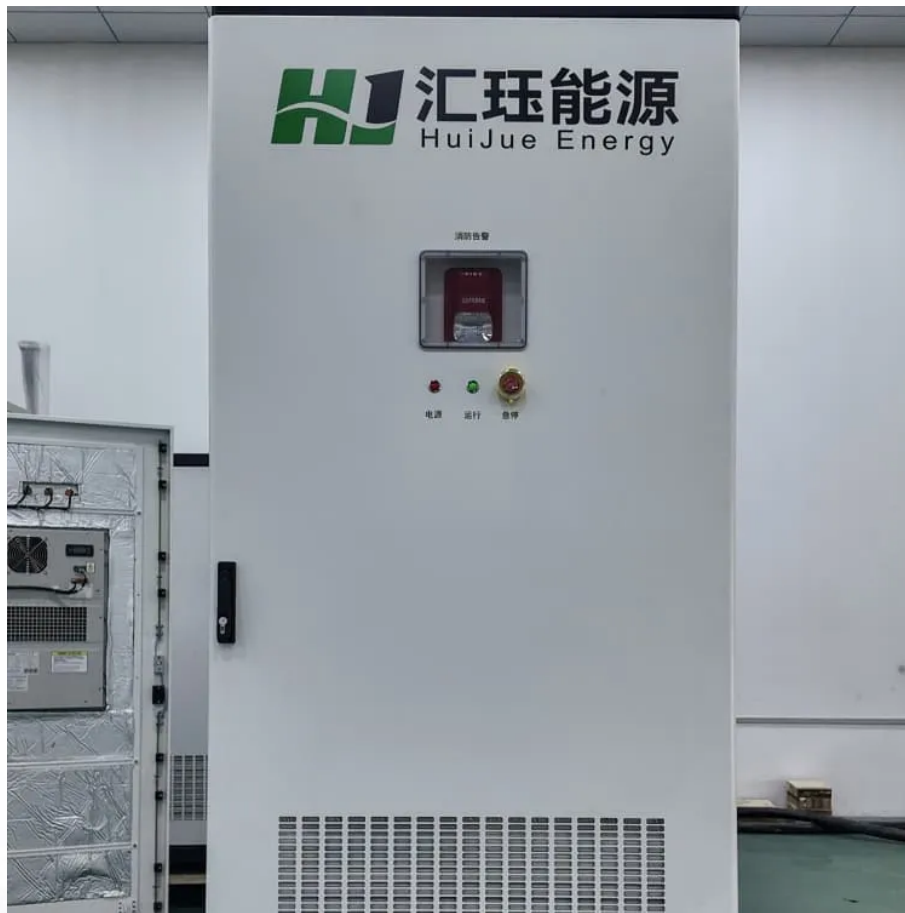


24v inverter voltage input range





Overview

Input Voltage: The input voltage range of a 12V inverter is DC 12 volts, while a 24V inverter has an input voltage range of DC 24 volts. What is the input voltage of a solar inverter?

Input voltage indicates the DC voltage required to operate the inverter. Inverters generally have an input voltage of 12V, 24V, or 48V. The inverter selected must match the power source, such as batteries or solar panels. Solar and EV systems usually use higher input voltages, such as 48V or more.

What voltage is used for inverter?

Small input voltages like 12V, 24V, 48V DC are used for inverters used in running small applications like mobile charger and home appliances / devices. Medium input voltages like 200V DC, 450V DC, 1000V DC are used for inverters used in photo-voltaic solar panels systems and electrical cars chargers.

What is a 24 volt inverter?

A 24 Volt Inverter is not quite as typical as a 12V Inverter. They have the same primary type of operation but operate at different input voltages. This article reviews some of the best, moderately priced 24V inverters currently on the market and then reviews standard criteria you should consider when selecting an inverter.

What voltages does a 3KW inverter support?

Battery System: 24V, compatible with various battery types. **Single MPPT:** 99.9% efficiency with a max current of 22A. **Multiple Output Voltages:** Supports 208, 220, 230, and 240Vac for versatile applications. This 3KW inverter supports a wide PV input voltage range of up to 450Vdc, making it ideal for regions with unstable grids.



24v inverter voltage input range

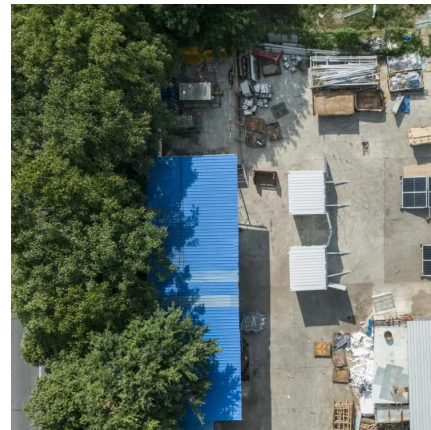


[How do I choose between a 12V and a 24V ...](#)

Aug 28, 2024 · What is the difference between 12V and 24V inverters? 12V and 24V inverters are named based on their input voltage differences. ...

[How To Read And Interpret An Inverter ...](#)

3 days ago · Input voltage indicates the DC voltage required to operate the inverter. Inverters generally have an input voltage of 12V, 24V, or 48V. ...



[A comprehensive guide to inverter voltage](#)

Dec 18, 2024 · Input voltage selection: The DC input voltage of the inverter should match the output voltage of your batteries or solar panels. For ...

[Understanding Inverter Voltage: Definition, ...](#)

Dec 16, 2024 · The voltage of an inverter itself is divided into several types, the first is a low-voltage inverter, a medium-voltage inverter, and a high ...



[24V inverter typical input voltage range](#)

Oct 8, 2020 · Is there a typical input voltage range for a small 24V inverter, maybe 500W to 1000W pure sine? I ask because I'm having trouble finding specs on many product listings, ...

[Pure Sine Wave Power Inverter Catalogue](#)

Jun 25, 2023 · Pure Sine Wave Power Inverter Applications ATO pure sine wave inverters output power ranging from 300W to 8000W with full protections against reverse connection, over ...



[A comprehensive guide to inverter voltage](#)

Dec 18, 2024 · Input voltage selection: The DC input voltage of the inverter should match the output voltage of your batteries or solar panels. For example, if you are using a 12V battery ...



[24v Pure Sine Wave Inverter](#)

High efficiency 24 volt 4000 watt pure sine wave inverter with remote control. 24V DC to 110V, 120V, 220V, 230V, 240V AC output voltage of this 24V inverter, frequency 50Hz or 60Hz, ultra ...

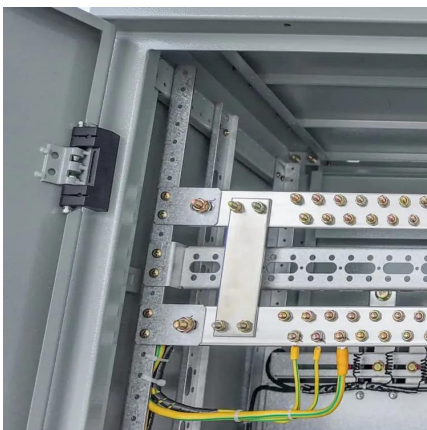


[Inverter DC Input Voltage Calculator](#)

Nov 29, 2025 · Use our Inverter DC Input Voltage Calculator to determine the best DC voltage (12V, 24V, or 48V) for your solar inverter. Optimize wiring, efficiency, and system safety with ...

[How Does Input Voltage \(12V, 24V, 48V\) Affect Inverter ...](#)

Aug 12, 2025 · When selecting a low voltage ac inverter for your industrial application, understanding the impact of input voltage is crucial. The choice between 12V, 24V, and 48V ...



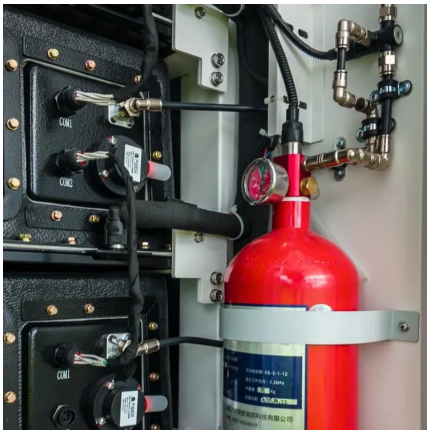
[The Definitive Guide to Solar Inverters For Off ...](#)

To effectively convert the battery DC power into AC power, the inverter's input voltage range must match the voltage range of the battery bank. ...



How To Read And Interpret An Inverter Specification

3 days ago · Input voltage indicates the DC voltage required to operate the inverter. Inverters generally have an input voltage of 12V, 24V, or 48V. The inverter selected must match the ...



24V 4000 Watt Pure Sine Wave Inverter

High efficiency 24 volt 4000 watt pure sine wave inverter with remote control. 24V DC to 110V, 120V, 220V, 230V, 240V AC output voltage of this 24V ...

The Differences Between 24v and 48v ...

Apr 13, 2025 · The correct inverter voltage is essential for system efficiency, safety, and future scalability. In standard off-grid solar systems, RVs, or ...



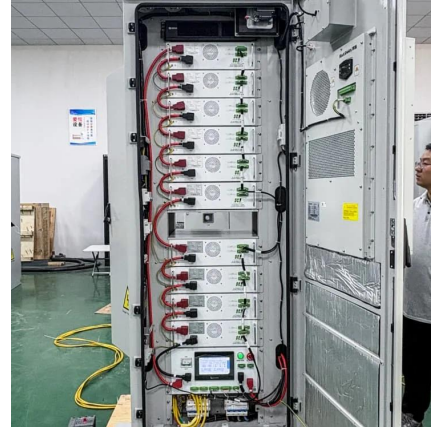
How Input Voltage Range Affects Inverter Performance

May 12, 2025 · The input voltage range refers to the minimum and maximum DC voltage the inverter can accept without shutting down or malfunctioning. For example, a 24V inverter may ...



[3KW 24V Hybrid Solar Inverter](#)

3 days ago · Bettsun 3KW 24V Hybrid Solar Inverter Key Features: PV Input Voltage Range: Up to 450Vdc for flexible solar panel compatibility. Battery System: 24V, compatible with various ...

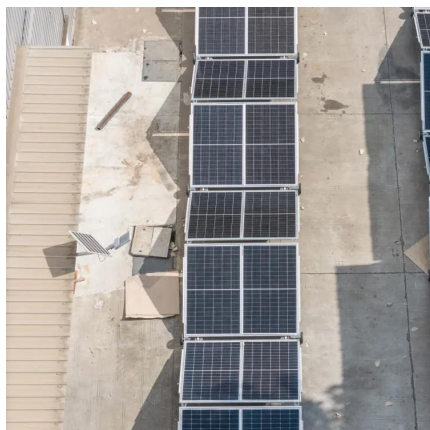
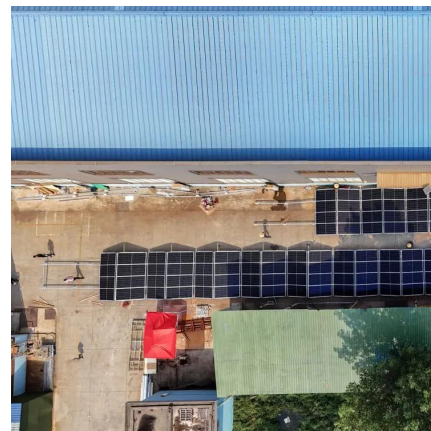


Understanding 24V Inverter Voltage Input Range for Reliable ...

SunContainer Innovations - Summary: This article explores the importance of 24V inverter voltage input ranges, their applications across industries, and best practices for selecting the right ...

[Can I Run a 12V Inverter on a 24V Battery?](#)

Apr 10, 2025 · You cannot connect a 12V inverter directly to a 24V battery because 12V inverters are only designed for 12V input, and 24V exceeds ...



[DC-AC inverters with wide input range and ...](#)

The CSI 100-3W-F1 DC-AC inverters offer a wide operating input range of 20-60Vdc, which allows operation from 24Vdc, 36Vdc and 48Vdc inputs.



[Choosing the Right 24VDC to 120VAC or 110VAC Inverter ...](#)

Apr 22, 2025 · This article details how to choose the right 24VDC to 120VAC or 110VAC inverter for solar system, and discusses the applicable regions, main differences and purchasing ...



[How do I choose between a 12V and a 24V inverter? - EDECOA](#)

Aug 28, 2024 · What is the difference between 12V and 24V inverters? 12V and 24V inverters are named based on their input voltage differences. There are some differences between them, ...

[Powmr 3KVA 24V 2400W Hybrid Inverter ...](#)

This is a multi-function inverter/charger; combining functions of inverter solar charger and battery charger to offer uninterruptible power support with ...



Contact Us

For technical specifications, project proposals, or partnership inquiries, please visit:
<https://eiei.pl>



Scan QR Code for More Information



<https://eiei.pl>