

24v inverter battery voltage input range





Overview

What does a 24V battery inverter do?

A 24V battery inverter is a device that converts 24V battery output (DC, or direct current) into 230V mains output required for domestic appliances (AC, or alternating current). It can also function as a backup / emergency power source in case of power cuts.

What voltages does a 3KW inverter support?

Battery System: 24V, compatible with various battery types. Single MPPT: 99.9% efficiency with a max current of 22A. Multiple Output Voltages: Supports 208, 220, 230, and 240Vac for versatile applications. This 3KW inverter supports a wide PV input voltage range of up to 450Vdc, making it ideal for regions with unstable grids.

What does '24V' mean?

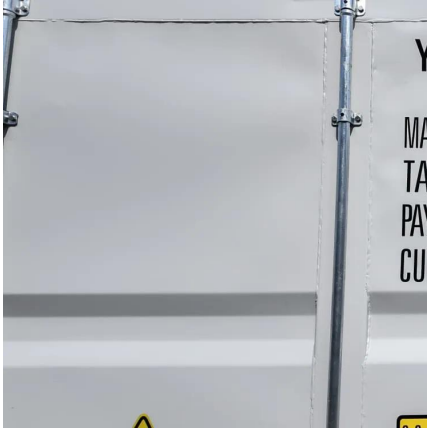
In many cases '24v' means 24v nominal with an actual upper limit around 28-32v give or take , but in other cases the seller didn't know or just repeated what the marketing material said or stated 24v was the limit. Its tough to get a straight answer on technical specs from amazon or aliexpress sellers of budget/commodity electronics.

How many charging modes does a 3KW inverter have?

This 3KW inverter includes four charging modes: solar only, grid priority, solar priority, and hybrid grid/PV charging, giving users full control over their energy consumption and charging preferences.



24v inverter battery voltage input range



[3KW 24V Hybrid Solar Inverter](#)

4 days ago · Bettsun 3KW 24V Hybrid Solar Inverter Key Features: PV Input Voltage Range: Up to 450Vdc for flexible solar panel compatibility. Battery ...

[A comprehensive guide to inverter voltage](#)

Dec 18, 2024 · Input voltage selection: The DC input voltage of the inverter should match the output voltage of your batteries or solar panels. For ...



[How to Read Solar Inverter Specifications](#)

Nov 17, 2023 · Solar inverter specifications include input and output specs highlighting voltage, power, efficiency, ...

12V vs. 24V vs. 48V Power Inverters: How to Choose the Right Voltage

Sep 8, 2025 · When shopping for a power inverter, most beginners fixate on wattage or price--but the input voltage (12V, 24V, or 48V) is just as critical. Pick the wrong voltage, and your inverter ...



[3KW 24V Hybrid Solar Inverter](#)

4 days ago · Bettsun 3KW 24V Hybrid Solar Inverter Key Features: PV Input Voltage Range: Up to 450Vdc for flexible solar panel compatibility. Battery System: 24V, compatible with various ...



[How Does Input Voltage \(12V, 24V, 48V\) Affect Inverter ...](#)

Aug 12, 2025 · When selecting a low voltage ac inverter for your industrial application, understanding the impact of input voltage is crucial. The choice between 12V, 24V, and 48V ...



How to Choose the Right Inverter Battery Voltage for Your ...

Master inverter battery voltage selection for optimal performance. Explore 12V/24V/48V systems, maintenance tips & SOROTEC's innovative energy storage solutions.





How to Choose the Best 24V Solar Inverter for Your Off-Grid ...

4 days ago · A 24v inverter requires a 24v DC input, typically achieved by connecting two 12v batteries in series. Using a mismatched voltage will damage the inverter or result in failure to ...



[24V inverter typical input voltage range](#)

Oct 8, 2020 · Is there a typical input voltage range for a small 24V inverter, maybe 500W to 1000W pure sine? I ask because I'm having trouble finding specs on many product listings, ...



[On Grid Inverter, Grid Tie Inverter, inverter](#)

300 watt solar on grid inverter, grid tie inverter, pure sine wave output, converts 12V/24V DC to 120 AC, 48V DC to 230V AC is optional. Grid tie solar inverter with high performance MPPT ...



[A comprehensive guide to inverter voltage](#)

Dec 18, 2024 · Input voltage selection: The DC input voltage of the inverter should match the output voltage of your batteries or solar panels. For example, if you are using a 12V battery ...





Can I Run a 12V Inverter on a 24V Battery?

Apr 10, 2025 · You cannot connect a 12V inverter directly to a 24V battery because 12V inverters are only designed for 12V input, and 24V exceeds ...

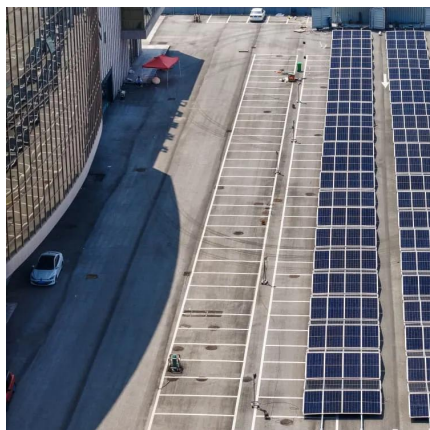


How Input Voltage Range Affects Inverter Performance

May 12, 2025 · For example, a 24V inverter may have a working input range of 21V to 30V. 2. Impact on System Compatibility Using a battery or solar system outside the inverter's range ...

How do I choose between a 12V and a 24V ...

Aug 28, 2024 · The input voltage of the inverter and the voltage of the battery should match to ensure the proper operation of the inverter. Therefore, it ...



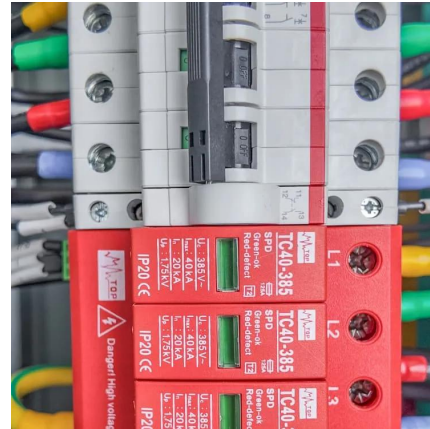
The Differences Between 24v and 48v ...

Apr 13, 2025 · The correct inverter voltage is essential for system efficiency, safety, and future scalability. In standard off-grid solar systems, RVs, or ...



[How do I choose between a 12V and a 24V inverter? - EDECOA](#)

Aug 28, 2024 · The input voltage of the inverter and the voltage of the battery should match to ensure the proper operation of the inverter. Therefore, it is not recommended to use a 24V ...

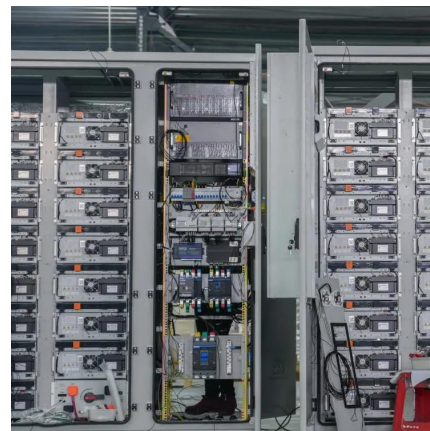


[Inverter DC Input Voltage Calculator. SolarMathLab](#)

Nov 29, 2025 · Use our Inverter DC Input Voltage Calculator to determine the best DC voltage (12V, 24V, or 48V) for your solar inverter. Optimize wiring, efficiency, and system safety with ...

[Understanding inverter voltage](#)

Jan 10, 2024 · In this article, let's embark on a comprehensive journey to unravel the mysteries surrounding inverter voltage, exploring its nuances, ...



Contact Us

For technical specifications, project proposals, or partnership inquiries, please visit: <https://eiei.pl>



Scan QR Code for More Information



<https://eiei.pl>