

21700 battery 36v15a how many cells are connected in series





Overview

Is 21700 a good battery pack?

A: Consider your space constraints, capacity needs, and budget. 21700 cells offer higher capacity but may not fit all applications. Q: What's the best way to charge a series-parallel battery pack?

.

What is a series & parallel configuration for 18650 & 21700 batteries?

This comprehensive guide will explore the intricacies of series and parallel configurations for 18650 and 21700 cells, helping you determine the best setup for your specific needs. In a series configuration, batteries are connected end-to-end, with the positive terminal of one cell connected to the negative terminal of the next.

What is cells per battery calculator?

» Electrical » Cells Per Battery Calculator The Cells Per Battery Calculator is a tool used to calculate the number of cells needed to create a battery pack with a specific voltage and capacity. When designing a battery pack, cells can be connected in two ways: in series to increase voltage, or in parallel to increase capacity.

Why do electric vehicles use 21700 cells?

For instance, electric vehicles can use 21700 cells to store more energy in less space, resulting in longer driving ranges without increasing the size of the battery pack. A 21700 cell refers to an individual battery unit, while a 21700 pack is a configuration of multiple cells connected in series or parallel.



21700 battery 36v15a how many cells are connected in series

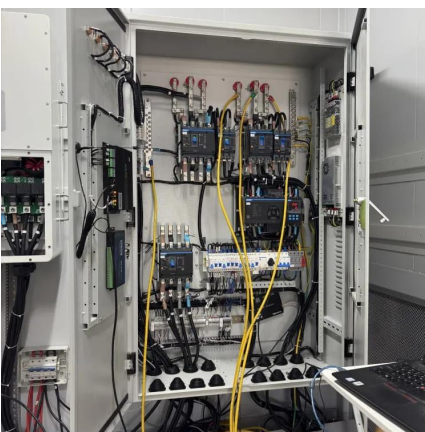


[Cells Per Battery Calculator](#)

Nov 8, 2024 · The Cells Per Battery Calculator is a tool used to calculate the number of cells needed to create a battery pack with a specific voltage and capacity. When designing a battery ...

[21700 battery 36v15a how many cells are connected in series](#)

About 21700 battery 36v15a how many cells are connected in series video introduction Our solar power generation and battery storage solutions support a diverse range of photovoltaic ...



Battery Pack Series-Parallel Calculator Online - Store Shoppe

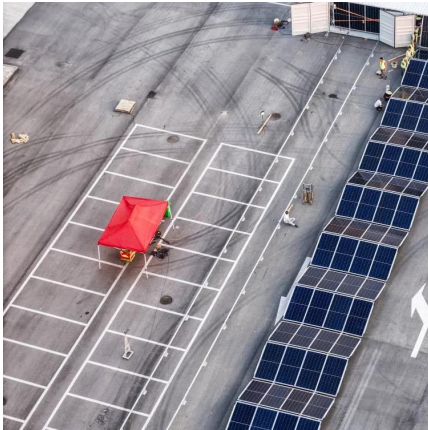
Use Store Shoppe's free Battery Pack Calculator to determine exactly how many cells you need for your target voltage and capacity. Supports standard 18650/21700 cells, LiPo, and custom ...

[Battery Pack Calculator , Good Calculators](#)

Here's a useful battery pack calculator for calculating the parameters of battery packs, including lithium-ion batteries. Use it to know the voltage, capacity, energy, and maximum



discharge ...



[Cells Per Battery Calculator](#)

Nov 8, 2024 · The Cells Per Battery Calculator is a tool used to calculate the number of cells needed to create a battery pack with a specific voltage ...

[Batteries in Series and Batteries in Parallel](#)

Feb 24, 2012 · Key learnings: Battery Cells
Definition: A battery is defined as a device where chemical reactions produce electrical potential, and ...



[Batteries in Series and Batteries in Parallel](#)

Feb 24, 2012 · Key learnings: Battery Cells
Definition: A battery is defined as a device where chemical reactions produce electrical potential, and multiple cells connected together form a ...



[Exploring the 21700 Battery: Your Ultimate ...](#)

Aug 8, 2024 · A 21700 cell refers to an individual battery unit, while a 21700 pack is a configuration of multiple cells connected in series or parallel. ...



How Many 21700 Batteries in Series for a 36V 15Ah Pack A ...

Lithium-ion battery packs like the 36V 15Ah configuration using 21700 cells are widely used in e-bikes, solar storage systems, and industrial equipment. This article explains how to calculate ...



[Exploring the 21700 Battery: Your Ultimate Guide](#)

Aug 8, 2024 · A 21700 cell refers to an individual battery unit, while a 21700 pack is a configuration of multiple cells connected in series or parallel. The 21700 pack is typically what ...



Guide to Series and Parallel Configurations: 18650 and 21700 Batteries

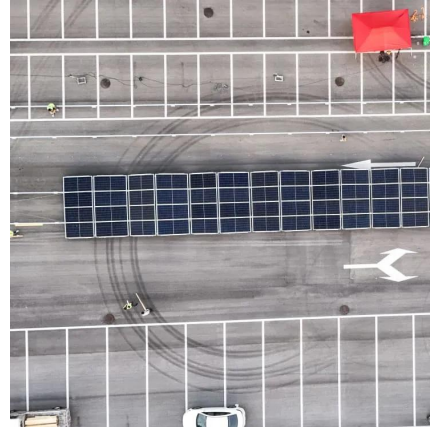
Explore optimal series and parallel configurations for 18650 and 21700 batteries. Maximize performance and efficiency with our expert guide.





[GUIDE TO SERIES AND PARALLEL CONFIGURATIONS 18650 AND 21700](#)

Can a battery be wired in a parallel configuration? Wiring batteries in both series and parallel configurations is possible and is so beneficial that be used in many power systems. To wire ...



How Many Cells in a 36 Volt Lithium Battery? A Definitive ...

Mar 14, 2025 · Thus, a 36 Volt lithium battery configuration commonly consists of 10 series-connected cells, with optional parallel arrangements to enhance capacity. How Many Cells Are ...

Contact Us

For technical specifications, project proposals, or partnership inquiries, please visit: <https://eiei.pl>

Scan QR Code for More Information



<https://eiei.pl>