

12v120w to 220v inverter





Overview

What is a 12V inverter?

A 12V inverter is an electronic device that converts 12V DC power into 220V AC power. This type of inverter is typically used to convert automotive or other 12V DC power sources into standard household or industrial power to power a variety of devices. inverter.com provides inverters from 300w to 3000w.

What is a 12V 300 watt inverter?

12V 300-watt power inverter for sale. The modified sine wave inverter delivers 600-watt peak power and converts 12V DC from battery or car lighter to AC 110V or 220V household power. Come with a USB port, 12V to 110V inverter can be a universal outlet for fast-charging electronic devices.

What is a 120W car inverter?

120w car inverter, DC 12V to AC 220V, peak power of 300w, aluminum alloy shell, power conversion efficiency up to 90%. The power inverter for car has overheat protection, overload protection, short circuit protection and other functions, the working temperature is (-10°C, 50°C), and there is no noise when working.

What is a 1000 watt 12V power inverter?

1000 watt 12V power inverter for sale, input voltage DC 12V, continuous power 1000W and unload current less than 0.8A. Comes with a USB port, and the 12V to 110V inverters' max efficiency reaches 90%, works at (-10°C, 50°C), and stores at (-30°C, 70°C). Modified sine inverter is compatible with air conditioners, washing machines, ovens, and so on.



12v120w to 220v inverter

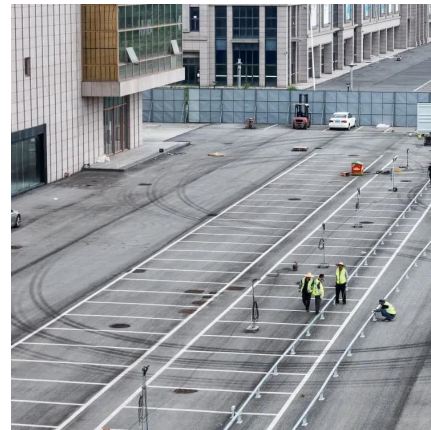


[Best 12V to 220V Power Inverters for Cars, ...](#)

Sep 6, 2025 · Power inverters convert DC power from a 12V battery source into usable AC power at 220V, making them essential for cars, RVs, and ...

[Upgraded high Power 6000W 8000W 10000W 12000W ...](#)

About this item ?High Efficiency Inverter?: This High-Tech Pure Sine Wave Power Converter Has Powerful Load Capacity and High Safety Performance,It Can Convert 12v/24v/48v DC ...



[120W Car Power Inverter, DC 12V to AC 220V , inverter](#)

120w car inverter, DC 12V to AC 220V, peak power of 300w, aluminum alloy shell, power conversion efficiency up to 90%. The power inverter for car has overheat protection, overload ...

[12 Volt 220 Volt Inverters](#)

Types of 12V to 220V Inverters A 12V to 220V inverter is an essential power conversion device that transforms low-voltage DC power (typically from a car battery or solar setup) into standard ...



12V To 220V Step UP Power Module 120W DC-AC Boost Inverter ...

Efficient 12V to 220V step-up power module with 120W output, dual channel design for stable DC-AC conversion, ideal for integrated circuits and power regulation applications.

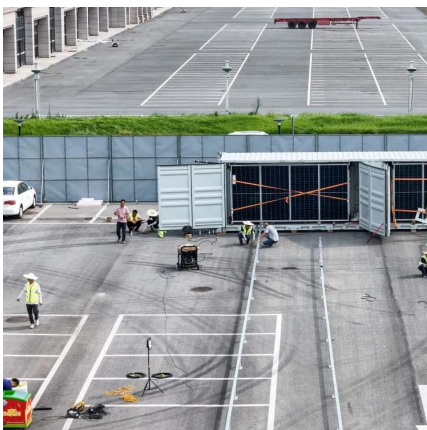
[Amazon : 12 V To 220 Volt Inverter](#)

Amazon : 12 v to 220 volt inverterThe ClimatePartner certified product label confirms that a product meets the requirements for the five steps in climate action including calculating carbon ...



Best 12 Volt to 220 Volt Pure Sine Wave Inverters for Home ...

Oct 4, 2025 · Buying Guide for 12V to 220V Power Inverters Choosing the right 12 volt 220 volt inverter depends on a few critical factors to ensure your electronics receive safe and adequate ...





[12V DC to 220V AC Inverter](#)

Shop high-quality 12v dc to 220v ac inverters for reliable power conversion. Perfect for home, car, and RV use. Pure sine wave inverters for efficient energy.

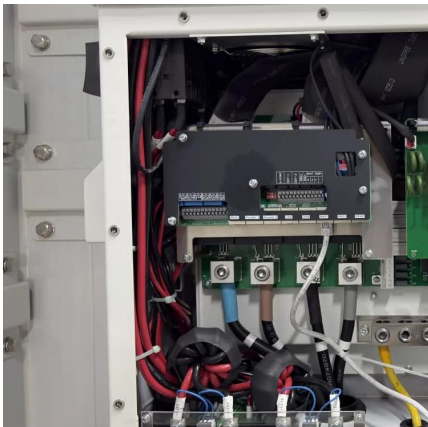


[Best 12V to 220V Power Inverters for Cars, Homes, and ...](#)

Sep 6, 2025 · Power inverters convert DC power from a 12V battery source into usable AC power at 220V, making them essential for cars, RVs, and off-grid applications. This article reviews ...

12v To 220v Inverter

The 12v To 220v Inverter is a premium choice in the Power Inverter category. When selecting a power inverter for electronic appliances, consider factors like wattage output, wave type ...



[12V To 220V Step UP Power Module 120W ...](#)

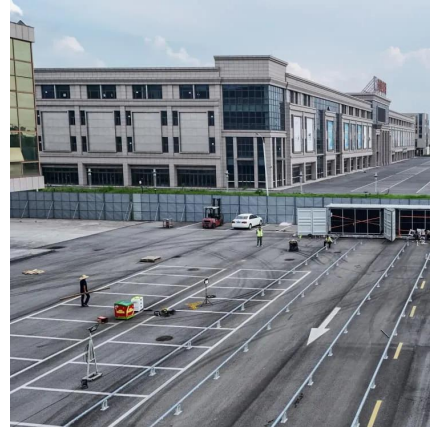
Efficient 12V to 220V step-up power module with 120W output, dual channel design for stable DC-AC conversion, ideal for integrated circuits and ...



12v Inverter, 12v DC to 110v/220v AC Power Inverter , inverter...

12V 300-watt power inverter for sale. The modified sine wave inverter delivers 600-watt peak power and converts 12V DC from battery or car lighter to AC 110V or 220V household power.

...



Contact Us

For technical specifications, project proposals, or partnership inquiries, please visit:
<https://eiei.pl>

Scan QR Code for More Information



<https://eiei.pl>