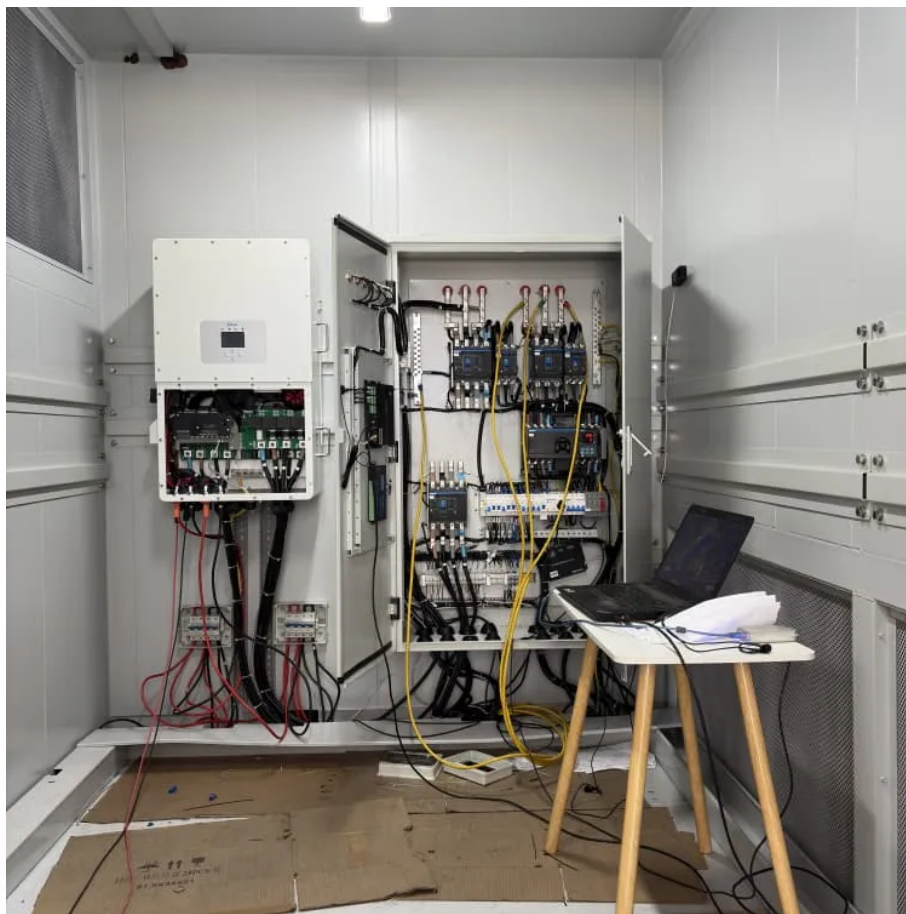


# 12V to 220V home inverter





## Overview

---

What is a 12V inverter?

A 12V inverter is an electronic device that converts 12V DC power into 220V AC power. This type of inverter is typically used to convert automotive or other 12V DC power sources into standard household or industrial power to power a variety of devices. inverter.com provides inverters from 300w to 3000w.

What is a 12V 300 watt inverter?

12V 300-watt power inverter for sale. The modified sine wave inverter delivers 600-watt peak power and converts 12V DC from battery or car lighter to AC 110V or 220V household power. Come with a USB port, 12V to 110V inverter can be a universal outlet for fast-charging electronic devices.

What is a 12V to 220V inverter?

The product is a very simple and compact 12v 220v inverter, which is a good choice for camping, boating, hiking and other outdoor activities. A 12V to 220V inverter with high efficiency is very important. It not only protects your family, but also helps you to get more and more value. 12V to 220V inverter, high efficiency power supply.

What is a 1000 watt 12V power inverter?

1000 watt 12V power inverter for sale, input voltage DC 12V, continuous power 1000W and unloads current less than 0.8A. Comes with a USB port, and the 12V to 110V inverters' max efficiency reaches 90%, works at (-10°C, 50°C), and stores at (-30°C, 70°C). Modified sine inverter is compatible with air conditioners, washing machines, ovens, and so on.



## 12V to 220V home inverter

---

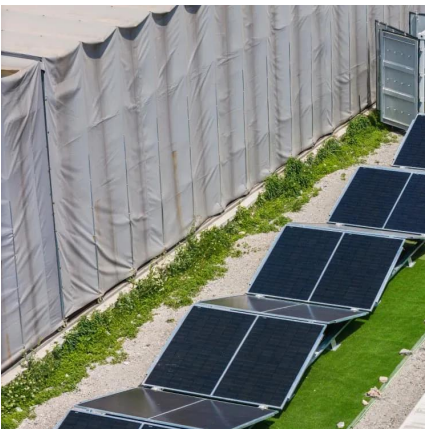
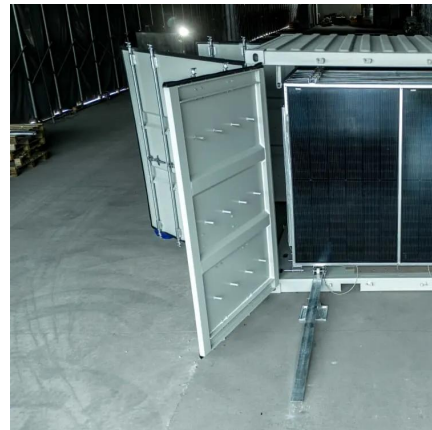


### [12V 220V Inverter 10000W](#)

The power of the 12V to 220V inverter is up to 10000W, which is enough for a family to use in the campsite and can also be used as a power generator for large home appliances. The product ...

### [12V DC to 220V AC Inverter](#)

Shop high-quality 12v dc to 220v ac inverters for reliable power conversion. Perfect for home, car, and RV use. Pure sine wave inverters for efficient energy.



### [12V-220V/230V Battery Inverter , 3000 Watt Pure Sine Wave](#)

Shop Leaptrend 12V DC to 220V/230V/240V AC 3000W Pure ...

### [Best 12V to 220V Power Inverters for Cars, Homes, and ...](#)

Sep 6, 2025 · Power inverters convert DC power from a 12V battery source into usable AC power at 220V, making them essential for cars, RVs, and off-grid applications. This article reviews ...



### [Amazon : 12 V To 220 Volt Inverter](#)

High-Power 4000W DC to AC Power Inverter - 12V to 110V/220V Converter with Dual USB Ports, Universal AC Outlet, LED Display for Cars, Trucks, RVs, and Home Backup (Black, 220V) Add ...



### **Suoer 500W Modified Sine Wave Inverter , Home Use, 12V to 220V...**

Efficient 500W modified sine wave inverter for home use, converts DC 12V to AC 220V, includes 5V 1A USB & solar compatibility.



### **Best 12 Volt to 220 Volt Pure Sine Wave Inverters for Home ...**

Sep 6, 2025 · Buying Guide for 12V to 220V Power Inverters Choosing the right 12 volt 220 volt inverter depends on a few critical factors to ensure your electronics receive safe and adequate ...





### 12v Inverter, 12v DC to 110v/220v AC Power Inverter , inverter...

12V 300-watt power inverter for sale. The modified sine wave inverter delivers 600-watt peak power and converts 12V DC from battery or car lighter to AC 110V or 220V household power.

...

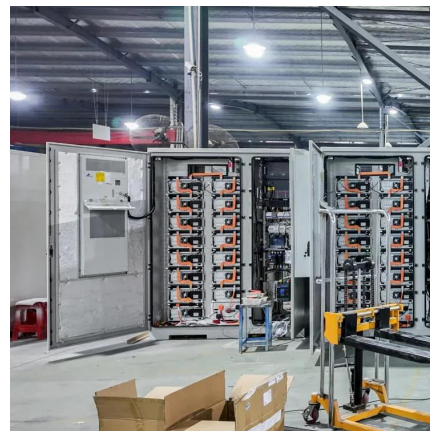


### Suoer 500W Modified Sine Wave Inverter

Efficient 500W modified sine wave inverter for home use, converts DC 12V to AC 220V, includes 5V 1A USB & solar compatibility.

### 12V-220V/230V Battery Inverter , 3000 Watt Pure Sine Wave

Shop Leaptrend 12V DC to 220V/230V/240V AC 3000W Pure Sine Wave Battery Inverter designed for RVs, Trucks, Outdoor, Off-Road, Marine, Home Household Electronics including ...



### 1500 Watt Modified Sine Wave Inverter, 12VDC to 220VAC

Energy efficient 1500 watt modified sine wave inverter for 12V/24V DC to 200V/220V/230V/240V AC conversion, rated power 1500W, peak power 3000W. Supports 12V/24V, compatible with ...



## [Best Inverter 12V to 220V Power Converters for Home and ...](#)

Aug 23, 2025 · Choosing the right inverter to convert 12V DC to 220V AC is essential for powering your electronics smoothly and safely, whether you are at home, camping, or on the road. ...



## [Best 12V to 220V Power Inverters for Cars, ...](#)

Sep 6, 2025 · Power inverters convert DC power from a 12V battery source into usable AC power at 220V, making them essential for cars, RVs, and ...

## Contact Us

For technical specifications, project proposals, or partnership inquiries, please visit: <https://eiei.pl>

**Scan QR Code for More Information**



<https://eiei.pl>